



School District of Altoona

1903 Bartlett Avenue Altoona, WI 54720
715-839-6032 715-839-6066 FAX

Dr. Connie Biedron, Superintendent

www.altoona.k12.wi.us

ALTOONA BOARD OF EDUCATION
Regular Meeting
Altoona Commons Addition
August 5, 2013
6:30 p.m.

Agenda

1. Call to Order
2. Roll Call
3. Reading of Public Notice
4. Pledge of Allegiance
5. Rules for Meeting
6. Approval of Minutes
 - a. July 15, 2013 Regular Meeting
7. Public Participation (All remarks are to be addressed to the Board; discussion among citizens present is not permitted. Board members may ask questions of a speaker; however, no formal deliberations are allowed at this time.)
 - a. Non-Agenda items - public comment and concern
 - b. Agenda items - public comment and concern
8. Treasurer's Report
 - a. Approval of Checks for Payment
 - (1) General fund checks totaling \$262,604.31
 - (2) Student activity fund checks totaling \$2,000.00
9. Information
 - a. Committee Reports
 - (1) Demographic Trends & Facility Planning Committee, July 16 and 30
 - b. General Information
 - c. President's Report
 - (1) WASB Fall Regional Meeting, October 16
 - (2) Board Goals Discussion
 - d. Superintendent's Report
 - (1) Energy Management: Annual Report 2013
 - (2) Open Enrollment Exceptions Update
 - (3) Project Based Learning School Update
 - (4) WASB Executive Coaching Workshop, July 26
 - (5) Coffee with Connie, August 7
 - (6) Eggs & Issues: State of K-12 Education, August 16
 - (7) New Staff Orientation Luncheon, August 23
 - (8) Other News, Meetings and Events

Altoona Board of Education, August 5, 2013

10. Board Action after Consideration and Discussion
 - a. Consider Resignation of District Mentor Coordinator
 - b. Consider Employment Recommendation to Fill District Mentor Coordinator Position
 - c. Consider Employment Recommendation to Fill High School Spanish Teacher Position
 - d. Consider Employment Recommendation to Fill Title 1 Teacher Position
 - e. Consider Employment Recommendation to Fill Early Childhood Special Education Teacher Position
 - f. Consider Employment Recommendation to Fill Elementary Intervention Specialist Position
 - g. Consider Employment Recommendation to Fill Middle/Intermediate Intervention Specialist Position
 - h. Consider Employment Recommendation to Fill Extracurricular Positions
 - i. Consider 2013-2015 Contract for Computer/Network Support Technician
 - j. Consider 66.0301 Cooperative Agreement with the Cluster A Consortium
 - k. Consider Budget Revisions for 2012/13

11. Adjournment

The vision of the Altoona School District, in partnership with our students, their families, and our community, is to build a foundation for life-long learning and the emotional well-being of our students. We are dedicated to offering large school opportunities with a small school approach.



School District of Altoona

1903 Bartlett Avenue Altoona, WI 54720
715-839-6032 715-839-6066 FAX

Dr. Connie Biedron, Superintendent

www.altoona.k12.wi.us

ALTOONA BOARD OF EDUCATION
Regular Meeting
Altoona Commons Addition
July 15, 2013
6:30 p.m.

1. The Regular Meeting of the Altoona Board of Education was called to order by Board President, Helen Drawbert at 6:30 p.m. in the Altoona commons addition.
2. Roll call was taken and the following were present:
Helen S. Drawbert, President
Robin E. Elvig, Vice President; Absent
Michael J. Hilger, Clerk
Bradley D. Poquette, Treasurer
David A. Rowe, Member
Dr. Connie M. Biedron, Superintendent
Joyce M. Orth, Board Secretary
3. Reading of Public Notice. Report of notice was given. All posting requirements were met and posting places are noted: Altoona City Hall, Altoona Post Office, school district office, high school office, middle school office, and elementary school office.
4. Pledge of Allegiance
5. Rules for Meeting
6. Approval of Minutes. a. July 1, 2013 Regular Meeting. Motion by Rowe to approve the minutes as presented, seconded by Hilger. Elvig, absent; Rowe, yes; Hilger, yes; Poquette, yes; Drawbert, yes. Motion carried 4-0.
7. Public Participation. a. Non-Agenda items - public comment and concern. None. b. Agenda items - public comment and concern. None.
8. Treasurer's Report. a. Approval of Checks for Payment. Motion by Rowe to approve General fund checks totaling \$1,847,521.79 and Student Activity fund checks totaling \$3,849.36 as presented, seconded by Hilger. Rowe, yes; Hilger, yes; Poquette, yes; Elvig, absent; Drawbert, yes. Motion carried 4-0.
b. Approval of Treasurer's Report. Motion by Rowe to approve the Treasurer's Report as presented, seconded by Hilger. Hilger, yes; Poquette, yes; Elvig, absent; Rowe, yes; Drawbert, yes. Motion carried 4-0.
9. Information. **a. Committee Reports.** None. **b. General Information.** (1) Policy Development. Policies 620 – Annual Operating Budget and 680 – Fiscal Accounting and Reporting were discussed, and the Support Staff Handbook which will be effective in August for foodservice employees was reviewed. Handbook adoption is planned for August 19.

- c. President's Report.** (1) WASB 2013 Educator Effectiveness Conference. The WASB will sponsor the Educator Effectiveness Conference on August 6, 8 and 14 in Madison, Green Bay and Turtle Lake respectively. In addition to the educator effectiveness initiative, testing, compensation plans, evaluations and more, will be addressed. (2) Review of Vision Statement. The Vision Statement was reviewed. The end of the last sentence: "on our unique, single campus setting," will be deleted. See 10.e. (3) August 5 Board Meeting. Helen reminded the board that she and David Rowe will both be absent from the August 5 meeting. **d. Superintendent's Report.** (1) Professional Learning Communities at Work Institute. A district team of 13 attended the institute July 8-10 in Minneapolis: Dr. Biedron, Karen Henry, Jeff Pepowski, Gary Pszeniczny, Joann Walker, Jamie Oliver, Bobbie Kuchta, Shelly Pierson, Kim Butnick, Greg Power, Melissa Martin, Amanda Miller, and Tara Betlach. Dr. Biedron shared highlights. (2) Books in the Park. The most recent Books in the Park was held on July 12. The last session is scheduled for July 26, 10:30 a.m. to 1:30 p.m. at 10th Street Park. (3) Review of Pedersen Elementary Room Analysis Report. A room analysis for Pedersen Elementary was reviewed. The report establishes "what we have," versus "what we need," in terms of rooms and square feet. (4) School Perceptions Facility Planning/ Community Engagement Survey. A proposal from School Perceptions for a community survey process was discussed. The survey would be conducted in the fall to understand the communities' priorities and willingness to financially support options to address overcrowding and safety. Project costs given do not include printing and mailing expenses: phase 1: \$3,700; phase 2: \$3,400; phase 3: \$2,700. See 10.g. (5) Open Enrollment Update: Alternative Application Procedure (Exceptions). The open enrollment exception process opened on July 1. Three (3) nonresident and two (2) resident applications have been submitted and approved to date. (6) Newsletter Update. A draft template, bid for printing, and topics for the August issue were reviewed. The \$899 bid was based on a 12-page newspaper layout (11 x 12). The newspaper will be called Rails Review. (7) Budget Update 2012/13 and Preliminary Budget 2013/14. Budget revisions for 2012/13 and the 2013/14 preliminary budget were reviewed. The preliminary budget includes fund 10 expenditures of \$16,640,209, and total expenditures for all funds of \$20,300,649. (8) Other News, Meetings and Events. Other topics Dr. Biedron noted include an opening for mentor coordinator, position interviews, and a project based learning team meeting scheduled for tomorrow.
10. Board Action after Consideration and Discussion. **a.** Consider Employment Recommendation to Fill Computer/Network Support Technician Position. Motion by Rowe to employ Andrew Lierman as computer/network support technician effective July 10, 2013, seconded by Poquette. Poquette, yes; Elvig, absent; Rowe, yes; Hilger, yes; Drawbert, yes. Motion carried 4-0. **b.** Consider Approval of 2013-2015 Administrative Contract for Intermediate/Middle School Principal. Motion by Rowe to approve the 2013-15 administrative contract for Gary Pszeniczny as presented, seconded by Hilger. Elvig, absent; Rowe, yes; Hilger, yes; Poquette, yes; Drawbert, yes. Motion carried 4-0. **c.** Consider Request to Waive Late Resignation Fee. Motion by Rowe to approve the request from Andrea Schaffer to waive the late resignation fee, seconded by Hilger. Rowe, yes; Hilger, no; Poquette, yes; Elvig, absent; Drawbert, no. Motion failed 2 (yes) -2 (no). **d.** Consider Recommendation for High School Flooring Project. Motion by Rowe to approve the recommendation for the high school flooring project as presented, seconded by Hilger. Hilger, no; Poquette, no; Elvig, absent; Rowe, no; Drawbert, no. Motion failed 0 (yes) -4 (no). **e.** Consider Amendment of Strategic Vision Statement. Motion by Rowe, seconded by Hilger to amend the Vision statement as discussed (9.c (2)), to read "The vision of the Altoona School District, in partnership with our students, their families, and our community, is to build a foundation for life-long learning and the emotional well-being of our students. We are dedicated to offering large school opportunities with a small school approach." Poquette, yes; Elvig, absent; Rowe, yes; Hilger, yes; Drawbert, yes. Motion carried 4-0. **f.** Consider Adoption of Strategic Goals and Objectives. Motion by Hilger to adopt the Strategic Goals and Objectives as presented, seconded by Poquette. Elvig, absent; Rowe, yes; Hilger, yes; Poquette, yes; Drawbert, yes. Motion carried 4-0.

g. Consider Approval of School Perceptions Facility Planning/Community Engagement Survey Proposal. Motion by Rowe to approve the School Perceptions survey process totaling \$9,800 (not including printing or postage) as presented, seconded by Hilger. Rowe, abstain; Hilger, yes; Poquette, yes (with reservations); Elvig, absent; Drawbert, yes. Motion carried 3-0. See 9.d.(4). h. Consider Budget Revisions for 2012/13. Motion by Rowe to approve the budget revisions as presented, seconded by Drawbert. Hilger, yes; Poquette, yes; Elvig, absent; Rowe, yes; Drawbert, yes. Motion carried 4-0.

11. Adjournment. Motion by Rowe to adjourn at 9:50 p.m., seconded by Poquette. Poquette, yes; Elvig, absent; Rowe, yes; Hilger, yes Drawbert, yes. Motion carried 4-0.

The next Regular Meeting of the Altoona Board of Education is scheduled for Monday, August 5, 2013 at 6:30 p.m. in the Altoona commons addition.

Joyce M. Orth CAP, Board Secretary

District Clerk

Date

The vision of the Altoona School District, in partnership with our students, their families, and our community, is to build a foundation for life-long learning and the emotional well-being of our students. We are dedicated to offering large school opportunities with a small school approach.

CHECK DATE	CHECK ACCOUNT			VENDOR	INVOICE DESCRIPTION	AMOUNT	POST MONTH
	NUMBER	NUMBER	NUMBER				
07/10/2013	129238	10 E 800 358 221910		CHARTER COMMUNICATIONS	Cable Internet Access for PreK ACCOUNT: 8245 11 460 0040346	29.99	July
					Totals for 129238	29.99	
07/10/2013	129239	10 E 800 358 221910		CHARTER COMMUNICATIONS	Internet traffic transport line ACCOUNT: 8245 11 795 0004192	1,050.00	July
					Totals for 129239	1,050.00	
07/10/2013	129240	10 E 100 411 110000		CULLIGAN WATER SERVICE	WATER DELIVERY	23.80	July
					Totals for 129240	23.80	
07/10/2013	129241	10 E 800 310 252105		DIVERSIFIED BENEFIT SERVICES I	ADMINISTRATIVE SERVICES - MAILINGS	703.82	July
					Totals for 129241	703.82	
07/10/2013	129242	10 E 800 293 291000		EDUCATORS BENEFIT CONSULTANTS	POST EMPLOYMENT BENEFITS - JULY - STRUCK, KNUDSON	750.00	July
					Totals for 129242	750.00	
07/10/2013	129243	10 E 800 353 258500		L & M MAIL SERVICE, INC.	JUNE MAIL SERVICES	1,906.65	July
					Totals for 129243	1,906.65	
07/10/2013	129244	27 E 700 411 152000		SERVICE MASTER OF CHIPPEWA VAL	Carpet and rug cleaning	436.46	July
					Totals for 129244	436.46	
07/10/2013	129245	10 E 100 411 254300		SHERWIN-WILLIAMS	PAINT AND SUPPLIES	56.65	July
	129245	10 E 200 411 254300		SHERWIN-WILLIAMS	PAINT AND SUPPLIES	56.65	July
	129245	10 E 400 411 254300		SHERWIN-WILLIAMS	PAINT AND SUPPLIES	56.64	July
	129245	10 E 100 411 254300		SHERWIN-WILLIAMS	PAINT	105.93	July
	129245	10 E 200 411 254300		SHERWIN-WILLIAMS	PAINT	105.93	July
	129245	10 E 400 411 254300		SHERWIN-WILLIAMS	PAINT	105.94	July
	129245	10 E 100 411 254300		SHERWIN-WILLIAMS	PAINT	45.12	July
	129245	10 E 200 411 254300		SHERWIN-WILLIAMS	PAINT	45.12	July
	129245	10 E 400 411 254300		SHERWIN-WILLIAMS	PAINT	45.11	July
					Totals for 129245	623.09	
07/10/2013	129246	10 E 800 730 270000		UNEMPLOYMENT INSURANCE	UNEMPLOYMENT INSURANCE	1,266.44	July
					Totals for 129246	1,266.44	
07/10/2013	129247	10 E 800 691 283000		U.S. BANK TRUST	ADMINISTRATION FEES	300.00	July
					Totals for 129247	300.00	
07/10/2013	129248	10 E 800 310 231100		WISC DEPT OF JUSTICE	BACKGROUND CHECKS FOR JUNE 2013	147.00	July
					Totals for 129248	147.00	
07/10/2013	129249	10 E 800 941 223100		WIAA	wiaa membership dues for 2013-2014 school year	875.00	July
					Totals for 129249	875.00	
07/10/2013	129250	10 E 800 320 254300		WIL-KIL PEST CONTROL INC.	ANNUAL PREBILL PAYMENT FOR MS AND HS	657.66	July
					Totals for 129250	657.66	

CHECK DATE	CHECK ACCOUNT		VENDOR	INVOICE	AMOUNT	POST
	NUMBER	NUMBER		DESCRIPTION		MONTH
07/12/2013	129251	50 E 800 310 257220	FIRE PROTECTION SPECIALISTS	cleaning of the hoods in both kitchens Totals for 129251	880.00 880.00	July
07/18/2013	129252	10 E 800 355 263300	AT&T	TELEPHONE Totals for 129252	2.51 2.51	July
07/18/2013	129253	10 E 800 355 263300	AT&T	TELEPHONE Totals for 129253	1,079.18 1,079.18	July
07/18/2013	129254	10 E 800 310 252000	BLP RESOURCES LLC	FINANCIAL CONSULTING SERVICES 2013-14 CONTRACT PAYMENT Totals for 129254	10,000.00 10,000.00	July
07/18/2013	129255	10 E 800 310 263300	CENTURYLINK - BUSINESS SERVICE	Long Distance Telephone service Totals for 129255	64.61 64.61	July
07/18/2013	129256	10 E 100 337 253300	CITY OF ALTOONA	ACCOUNT: 5165 5166 5167 5168 5169 5171 5174 6210 WTR, SEW, HYD, STRM	850.25	July
	129256	10 E 100 338 253300	CITY OF ALTOONA	ACCOUNT: 5165 5166 5167 5168 5169 5171 5174 6210 WTR, SEW, HYD, STRM	1,335.06	July
	129256	10 E 200 337 253300	CITY OF ALTOONA	ACCOUNT: 5165 5166 5167 5168 5169 5171 5174 6210 WTR, SEW, HYD, STRM	788.92	July
	129256	10 E 200 338 253300	CITY OF ALTOONA	ACCOUNT: 5165 5166 5167 5168 5169 5171 5174 6210 WTR, SEW, HYD, STRM	1,168.52	July
	129256	10 E 400 337 253300	CITY OF ALTOONA	ACCOUNT: 5165 5166 5167 5168 5169 5171 5174 6210 WTR, SEW, HYD, STRM	4,949.64	July
	129256	10 E 400 338 253300	CITY OF ALTOONA	ACCOUNT: 5165 5166 5167 5168 5169 5171 5174 6210 WTR, SEW, HYD, STRM	91.02	July
	129256	10 E 100 339 253300	CITY OF ALTOONA	ACCOUNT: 5165 5166 5167 5168 5169 5171 5174 6210 WTR, SEW, HYD, STRM	1,853.57	July
	129256	10 E 200 339 253300	CITY OF ALTOONA	ACCOUNT: 5165 5166 5167 5168 5169 5171 5174 6210 WTR, SEW, HYD, STRM	1,964.23	July
	129256	10 E 400 339 253300	CITY OF ALTOONA	ACCOUNT: 5165 5166 5167 5168 5169 5171 5174 6210 WTR, SEW, HYD, STRM	492.25	July
07/25/2013	129256	10 E 100 337 253300	CITY OF ALTOONA	ACCOUNT: 5165 5166 5167 5168 5169 5171 5174 6210 WTR, SEW, HYD, STRM	-850.25	July
	129256	10 E 100 338 253300	CITY OF ALTOONA	ACCOUNT: 5165 5166 5167 5168 5169 5171 5174 6210 WTR, SEW, HYD, STRM	-1,335.06	July
	129256	10 E 200 337 253300	CITY OF ALTOONA	ACCOUNT: 5165 5166 5167 5168 5169 5171 5174 6210 WTR, SEW, HYD, STRM	-788.92	July
	129256	10 E 200 338 253300	CITY OF ALTOONA	ACCOUNT: 5165 5166 5167 5168 5169 5171 5174 6210 WTR, SEW, HYD, STRM	-1,168.52	July

CHECK DATE	CHECK NUMBER	ACCOUNT NUMBER	VENDOR	INVOICE DESCRIPTION	AMOUNT	POST MONTH
	129256	10 E 400 337 253300	CITY OF ALTOONA	SEW, HYD, STRM ACCOUNT: 5165 5166 5167 5168 5169 5171 5174 6210 WTR, SEW, HYD, STRM	-4,949.64	July
	129256	10 E 400 338 253300	CITY OF ALTOONA	ACCOUNT: 5165 5166 5167 5168 5169 5171 5174 6210 WTR, SEW, HYD, STRM	-91.02	July
	129256	10 E 100 339 253300	CITY OF ALTOONA	ACCOUNT: 5165 5166 5167 5168 5169 5171 5174 6210 WTR, SEW, HYD, STRM	-1,853.57	July
	129256	10 E 200 339 253300	CITY OF ALTOONA	ACCOUNT: 5165 5166 5167 5168 5169 5171 5174 6210 WTR, SEW, HYD, STRM	-1,964.23	July
	129256	10 E 400 339 253300	CITY OF ALTOONA	ACCOUNT: 5165 5166 5167 5168 5169 5171 5174 6210 WTR, SEW, HYD, STRM	-492.25	July
				Totals for 129256	0.00	
07/18/2013	129257	27 E 800 370 436000	CLINCARE CORP/EC ACADEMY DIV	Eau Claire Academy Totals for 129257	240.00	July
07/18/2013	129258	10 E 800 411 221910	GOOGLE, INC.	Archiving service Totals for 129258	13.75	July
07/18/2013	129260	10 E 800 358 221910	PAGE CALL COMMUNICATIONS SYSTM	Pager service for 2013-14 Totals for 129260	499.20	July
07/18/2013	129261	10 E 200 411 120600	SCHOLASTIC BOOK CLUBS	ACCOUNT: 053841946 BOOK CLUB ORDER	275.60	July
	129261	10 E 200 411 120600	SCHOLASTIC BOOK CLUBS	ACCOUNT 053841946 BOOK CLUB ORDER	4.96	July
				Totals for 129261	280.56	
07/18/2013	129262	10 E 800 435 120000	SCHOOL SOFTWARE GROUP	Build Your Own curriculum Lic Totals for 129262	4,164.00	July
07/18/2013	129263	10 E 200 432 222200	SMYLES BOOK CO	Books Selected from Preview - for MS Totals for 129263	1,036.43	July
07/18/2013	129264	10 E 800 310 231500	WELD, RILEY, PRENN & RICCI	LEGAL FEES Totals for 129264	1,327.50	July
07/22/2013	129265	10 E 800 441 162101	SCHRANK, BENJAMIN	Show Choir Choreography Camp. Totals for 129265	2,000.00	July
07/25/2013	129266	10 E 800 310 252100	DIVERSIFIED BENEFIT SERVICES I	ADMINISTRATIVE SERVICES Totals for 129266	172.91	July
07/25/2013	129267	10 E 800 348 254500	EXXON MOBIL - PROCESSING CENTE	Blanket PO Totals for 129267	865.86	July
07/25/2013	129268	10 E 100 411 110000	GORSKI, PAULA	RAIL Supplies Totals for 129268	196.21	July
07/25/2013	129269	10 E 100 411 110000	SCHRADER, ANDREW	RAIL Supplies	29.79	July

CHECK DATE	CHECK NUMBER	ACCOUNT NUMBER	VENDOR	INVOICE DESCRIPTION	AMOUNT	POST MONTH
					Totals for 129269	29.79
07/25/2013	129270	10 E 100 411 254300	SHERWIN-WILLIAMS	PAINT	76.90	July
	129270	10 E 200 411 254300	SHERWIN-WILLIAMS	PAINT	76.90	July
	129270	10 E 400 411 254300	SHERWIN-WILLIAMS	PAINT	76.89	July
	129270	10 E 100 411 254300	SHERWIN-WILLIAMS	PAINT, TAPE, BRUSH	139.15	July
	129270	10 E 200 411 254300	SHERWIN-WILLIAMS	PAINT, TAPE, BRUSH	139.15	July
	129270	10 E 400 411 254300	SHERWIN-WILLIAMS	PAINT, TAPE, BRUSH	139.16	July
					Totals for 129270	648.15
07/25/2013	129271	10 E 200 310 120000	UWEC RECREATION & SPORT FACILI	WYSP SUMMER SCHOOL 2013	4,050.00	July
					Totals for 129271	4,050.00
07/25/2013	129272	10 E 100 337 253300	CITY OF ALTOONA	ACCOUNT: 5165 5166 5167 5168 5169 5171 5174 6210 WTR, SEW, HYD, STRM	850.25	July
	129272	10 E 100 338 253300	CITY OF ALTOONA	ACCOUNT: 5165 5166 5167 5168 5169 5171 5174 6210 WTR, SEW, HYD, STRM	1,335.06	July
	129272	10 E 200 337 253300	CITY OF ALTOONA	ACCOUNT: 5165 5166 5167 5168 5169 5171 5174 6210 WTR, SEW, HYD, STRM	788.92	July
	129272	10 E 200 338 253300	CITY OF ALTOONA	ACCOUNT: 5165 5166 5167 5168 5169 5171 5174 6210 WTR, SEW, HYD, STRM	1,168.52	July
	129272	10 E 400 337 253300	CITY OF ALTOONA	ACCOUNT: 5165 5166 5167 5168 5169 5171 5174 6210 WTR, SEW, HYD, STRM	257.14	July
	129272	10 E 400 338 253300	CITY OF ALTOONA	ACCOUNT: 5165 5166 5167 5168 5169 5171 5174 6210 WTR, SEW, HYD, STRM	91.02	July
	129272	10 E 100 339 253300	CITY OF ALTOONA	ACCOUNT: 5165 5166 5167 5168 5169 5171 5174 6210 WTR, SEW, HYD, STRM	1,853.57	July
	129272	10 E 200 339 253300	CITY OF ALTOONA	ACCOUNT: 5165 5166 5167 5168 5169 5171 5174 6210 WTR, SEW, HYD, STRM	1,964.23	July
	129272	10 E 400 339 253300	CITY OF ALTOONA	ACCOUNT: 5165 5166 5167 5168 5169 5171 5174 6210 WTR, SEW, HYD, STRM	492.25	July
					Totals for 129272	8,800.96
07/10/2013	131400004	10 E 100 320 254300	BRAUN CORPORATION LLC	QUARTERLY EXAM/LUBE OF LIFTS	96.93	July
	131400004	10 E 400 320 254300	BRAUN CORPORATION LLC	QUARTERLY EXAM/LUBE OF LIFTS	76.67	July
					Totals for 131400004	173.60
07/10/2013	131400005	50 E 800 342 257220	EHRHARD, MARGARET	Mileage to Lacrosse	98.31	July
					Totals for 131400005	98.31
07/10/2013	131400006	10 E 100 320 254300	NORTH STAR FIRE SYSTEMS CORP	Fire Extinguishers inspection and service for all buildings	487.53	July
	131400006	10 E 200 320 254300	NORTH STAR FIRE SYSTEMS CORP	Fire Extinguishers inspection and service for all buildings	487.53	July
	131400006	10 E 400 320 254300	NORTH STAR FIRE SYSTEMS CORP	Fire Extinguishers inspection and service for all buildings	487.54	July
					Totals for 131400006	1,462.60

CHECK DATE	CHECK ACCOUNT		VENDOR	INVOICE		POST MONTH
	NUMBER	NUMBER		DESCRIPTION	AMOUNT	
07/10/2013	131400007	10 E 800 342 232100	ORTH, JOYCE	Mileage and expense reimbursement	40.69	July
				Totals for 131400007	40.69	
07/10/2013	131400008	10 E 800 942 232100	ROTARAY CLUB OF EAU CLAIRE	BIEDRON - ROTARY FEES- QUARTER ENDED 06/30/2013	172.00	July
				Totals for 131400008	172.00	
07/10/2013	131400009	10 E 800 310 254300	SHRED AWAY	Shredding ON 06/26/13	67.50	July
				Totals for 131400009	67.50	
07/10/2013	131400010	10 E 800 411 252000	STAPLES	SUPPLIES	2.89	July
				Totals for 131400010	2.89	
07/10/2013	131400011	10 E 800 941 231100	WISC ASSOC OF SCHOOL BOARDS	Membership Renewal	4,241.00	July
				Totals for 131400011	4,241.00	
07/12/2013	131400012	50 E 800 415 257220	DEAN FOODS OF WISCONSIN	Morning Glory/Dean Foods blanket order	9.81	July
				Totals for 131400012	9.81	
07/23/2013	131400013	10 L 000 000 811650	WEST CENTRAL EDUCATION ASSN	Payroll accrual	196.80	July
				Totals for 131400013	196.80	
07/23/2013	131400014	10 L 000 000 811634	MINNESOTA LIFE INSURANCE CO	Payroll accrual	150.27	July
	131400014	27 L 000 000 811634	MINNESOTA LIFE INSURANCE CO	Payroll accrual	9.54	July
	131400014	10 L 000 000 811634	MINNESOTA LIFE INSURANCE CO	Payroll accrual	49.57	July
	131400014	27 L 000 000 811634	MINNESOTA LIFE INSURANCE CO	Payroll accrual	5.43	July
	131400014	10 E 100 230 110000	MINNESOTA LIFE INSURANCE CO	AUGUST BILLING IN JULY 2013	-12.74	July
	131400014	10 E 200 230 120000	MINNESOTA LIFE INSURANCE CO	AUGUST BILLING IN JULY 2013	-12.74	July
	131400014	10 E 400 230 120000	MINNESOTA LIFE INSURANCE CO	AUGUST BILLING IN JULY 2013	-11.99	July
				Totals for 131400014	177.34	
07/18/2013	131400015	10 E 100 320 254300	G & K SERVICES, INC.	Blanket P.O.	13.47	July
	131400015	10 E 200 320 254300	G & K SERVICES, INC.	Blanket P.O.	13.47	July
	131400015	10 E 400 320 254300	G & K SERVICES, INC.	Blanket P.O.	13.46	July
				Totals for 131400015	40.40	
07/18/2013	131400016	27 E 800 370 436000	L E PHILLIPS CAREER DEVELOPEME	Alternate School Youth Program	57.75	July
				Totals for 131400016	57.75	
07/18/2013	131400017	10 E 100 320 254300	THE MOOREFIELD GROUP INC	WATER MANAGEMENT SERVICE - BOILERS, CLOSED HEATING SYSTEMS	61.67	July
	131400017	10 E 200 320 254300	THE MOOREFIELD GROUP INC	WATER MANAGEMENT SERVICE - BOILERS, CLOSED HEATING SYSTEMS	61.67	July
	131400017	10 E 400 320 254300	THE MOOREFIELD GROUP INC	WATER MANAGEMENT SERVICE - BOILERS, CLOSED HEATING SYSTEMS	61.66	July
				Totals for 131400017	185.00	
07/18/2013	131400018	10 E 800 420 162000	RIDDELL ALL AMERICAN	MS football helmets	1,839.28	July
				Totals for 131400018	1,839.28	

CHECK	CHECK ACCOUNT			INVOICE			POST
DATE	NUMBER	NUMBER	VENDOR	DESCRIPTION	AMOUNT	MONTH	
07/18/2013	131400019	27 E 800 382 436670	SCHOOL DISTRICT OF MENOMONIE	2911-2012 66.03 VISUALLY IMPAIRED	12,687.00	July	
				Totals for 131400019	12,687.00		
07/18/2013	131400020	10 L 000 000 811200	STUDENT TRANSIT EAU CLAIRE, IN	FUEL DEBIT JAN 2013-JUNE 2013	26,391.25	July	
	131400020	10 E 800 341 256210	STUDENT TRANSIT EAU CLAIRE, IN	BUS FOR WYSP	1,680.00	July	
	131400020	10 E 800 341 256270	STUDENT TRANSIT EAU CLAIRE, IN	CHARTERS - BEAVER CRK, AIRPORT, PHOENIX PARK	352.37	July	
	131400020	10 E 800 341 256210	STUDENT TRANSIT EAU CLAIRE, IN	SUMMER SCHOOL BUSSING	4,528.55	July	
				Totals for 131400020	32,952.17		
07/18/2013	131400021	10 E 800 291 221300	WINSAND, STACY	CREDIT REIMBURSEMENT	240.00	July	
				Totals for 131400021	240.00		
07/25/2013	131400022	10 E 100 411 110000	CHIPPEWA VALLEY SPORTING GOODS	RAIL T-SHIRTS	28.00	July	
				Totals for 131400022	28.00		
07/25/2013	131400023	10 E 200 342 241000	PSZENICZNY, GARY	Mileage to July 14 - 17 PLC seminar in Minneapolis.	123.17	July	
				Totals for 131400023	123.17		
07/25/2013	131400024	10 E 800 291 221300	SCOTT, JULIE	CREDIT REIMBURSEMENT	300.00	July	
				Totals for 131400024	300.00		
07/25/2013	131400025	10 E 100 342 241000	WALKER, JOANN	PLC Conference, Minneapolis, MN July 7-10, 2013	123.17	July	
				Totals for 131400025	123.17		
07/25/2013	131400026	10 E 800 942 231100	WISC ASSOC OF SCHOOL BOARDS	Policy Resource Guide Subscription	1,900.00	July	
				Totals for 131400026	1,900.00		
07/12/2013	201300007	10 L 000 000 811614	DIVERSIFIED BENEFIT SERVICES I	Flex plan charges	311.92	July	
				Totals for 201300007	311.92		
07/12/2013	201300008	10 L 000 000 811614	DIVERSIFIED BENEFIT SERVICES I	Flex plan charges	4,631.00	July	
				Totals for 201300008	4,631.00		
07/12/2013	201300009	10 E 100 249 110000	DIVERSIFIED BENEFIT SERVICES I	HRA PAYMENTS	155.26	July	
	201300009	10 E 100 249 110100	DIVERSIFIED BENEFIT SERVICES I	HRA PAYMENTS	230.95	July	
	201300009	10 E 100 249 110101	DIVERSIFIED BENEFIT SERVICES I	HRA PAYMENTS	337.67	July	
	201300009	10 E 100 249 110200	DIVERSIFIED BENEFIT SERVICES I	HRA PAYMENTS	205.21	July	
	201300009	10 E 100 249 110300	DIVERSIFIED BENEFIT SERVICES I	HRA PAYMENTS	241.80	July	
	201300009	10 E 100 249 110400	DIVERSIFIED BENEFIT SERVICES I	HRA PAYMENTS	138.17	July	
	201300009	10 E 100 249 143000	DIVERSIFIED BENEFIT SERVICES I	HRA PAYMENTS	43.87	July	
	201300009	10 E 100 249 213000	DIVERSIFIED BENEFIT SERVICES I	HRA PAYMENTS	65.69	July	
	201300009	10 E 100 249 222200	DIVERSIFIED BENEFIT SERVICES I	HRA PAYMENTS	50.16	July	
	201300009	10 E 100 249 241000	DIVERSIFIED BENEFIT SERVICES I	HRA PAYMENTS	239.32	July	
	201300009	10 E 100 249 253300	DIVERSIFIED BENEFIT SERVICES I	HRA PAYMENTS	79.14	July	
	201300009	10 E 100 249 110100	DIVERSIFIED BENEFIT SERVICES I	HRA PAYMENTS	68.52	July	
	201300009	10 E 100 249 110101	DIVERSIFIED BENEFIT SERVICES I	HRA PAYMENTS	72.13	July	
	201300009	10 E 100 249 110200	DIVERSIFIED BENEFIT SERVICES I	HRA PAYMENTS	115.21	July	
	201300009	10 E 100 249 110300	DIVERSIFIED BENEFIT SERVICES I	HRA PAYMENTS	57.60	July	
	201300009	10 E 200 249 120000	DIVERSIFIED BENEFIT SERVICES I	HRA PAYMENTS	27.23	July	
	201300009	10 E 200 249 120500	DIVERSIFIED BENEFIT SERVICES I	HRA PAYMENTS	156.01	July	

CHECK	CHECK ACCOUNT					INVOICE		POST
DATE	NUMBER	NUMBER	VENDOR			DESCRIPTION	AMOUNT	MONTH
07/12/2013	201300009	10 E 200 249 120600	DIVERSIFIED BENEFIT SERVICES	I	HRA PAYMENTS	131.61	July	
	201300009	10 E 200 249 121000	DIVERSIFIED BENEFIT SERVICES	I	HRA PAYMENTS	8.38	July	
	201300009	10 E 200 249 122000	DIVERSIFIED BENEFIT SERVICES	I	HRA PAYMENTS	164.25	July	
	201300009	10 E 200 249 123000	DIVERSIFIED BENEFIT SERVICES	I	HRA PAYMENTS	15.02	July	
	201300009	10 E 200 249 124000	DIVERSIFIED BENEFIT SERVICES	I	HRA PAYMENTS	64.77	July	
	201300009	10 E 200 249 125400	DIVERSIFIED BENEFIT SERVICES	I	HRA PAYMENTS	3.23	July	
	201300009	10 E 200 249 125500	DIVERSIFIED BENEFIT SERVICES	I	HRA PAYMENTS	28.84	July	
	201300009	10 E 200 249 125510	DIVERSIFIED BENEFIT SERVICES	I	HRA PAYMENTS	57.88	July	
	201300009	10 E 200 249 126000	DIVERSIFIED BENEFIT SERVICES	I	HRA PAYMENTS	75.32	July	
	201300009	10 E 200 249 127000	DIVERSIFIED BENEFIT SERVICES	I	HRA PAYMENTS	103.96	July	
	201300009	10 E 200 249 132700	DIVERSIFIED BENEFIT SERVICES	I	HRA PAYMENTS	32.62	July	
	201300009	10 E 200 249 136320	DIVERSIFIED BENEFIT SERVICES	I	HRA PAYMENTS	7.49	July	
	201300009	10 E 200 249 141000	DIVERSIFIED BENEFIT SERVICES	I	HRA PAYMENTS	7.20	July	
	201300009	10 E 200 249 143000	DIVERSIFIED BENEFIT SERVICES	I	HRA PAYMENTS	59.62	July	
	201300009	10 E 200 249 213000	DIVERSIFIED BENEFIT SERVICES	I	HRA PAYMENTS	115.41	July	
	201300009	10 E 200 249 222200	DIVERSIFIED BENEFIT SERVICES	I	HRA PAYMENTS	96.31	July	
	201300009	10 E 200 249 241000	DIVERSIFIED BENEFIT SERVICES	I	HRA PAYMENTS	150.24	July	
	201300009	10 E 200 249 241100	DIVERSIFIED BENEFIT SERVICES	I	HRA PAYMENTS	1.22	July	
	201300009	10 E 200 249 253300	DIVERSIFIED BENEFIT SERVICES	I	HRA PAYMENTS	106.99	July	
	201300009	10 E 200 249 254300	DIVERSIFIED BENEFIT SERVICES	I	HRA PAYMENTS	52.10	July	
	201300009	10 E 400 249 121000	DIVERSIFIED BENEFIT SERVICES	I	HRA PAYMENTS	42.66	July	
	201300009	10 E 400 249 122000	DIVERSIFIED BENEFIT SERVICES	I	HRA PAYMENTS	230.82	July	
	201300009	10 E 400 249 123000	DIVERSIFIED BENEFIT SERVICES	I	HRA PAYMENTS	100.52	July	
	201300009	10 E 400 249 124000	DIVERSIFIED BENEFIT SERVICES	I	HRA PAYMENTS	133.67	July	
	201300009	10 E 400 249 125400	DIVERSIFIED BENEFIT SERVICES	I	HRA PAYMENTS	3.23	July	
	201300009	10 E 400 249 125500	DIVERSIFIED BENEFIT SERVICES	I	HRA PAYMENTS	28.84	July	
	201300009	10 E 400 249 126000	DIVERSIFIED BENEFIT SERVICES	I	HRA PAYMENTS	193.13	July	
	201300009	10 E 400 249 127000	DIVERSIFIED BENEFIT SERVICES	I	HRA PAYMENTS	187.20	July	
	201300009	10 E 400 249 141000	DIVERSIFIED BENEFIT SERVICES	I	HRA PAYMENTS	10.94	July	
	201300009	10 E 400 249 143000	DIVERSIFIED BENEFIT SERVICES	I	HRA PAYMENTS	60.20	July	
	201300009	10 E 400 249 213000	DIVERSIFIED BENEFIT SERVICES	I	HRA PAYMENTS	81.17	July	
	201300009	10 E 400 249 222200	DIVERSIFIED BENEFIT SERVICES	I	HRA PAYMENTS	96.18	July	
	201300009	10 E 400 249 241000	DIVERSIFIED BENEFIT SERVICES	I	HRA PAYMENTS	141.28	July	
	201300009	10 E 400 249 241100	DIVERSIFIED BENEFIT SERVICES	I	HRA PAYMENTS	3.87	July	
	201300009	10 E 400 249 253300	DIVERSIFIED BENEFIT SERVICES	I	HRA PAYMENTS	99.05	July	
	201300009	10 E 400 249 254300	DIVERSIFIED BENEFIT SERVICES	I	HRA PAYMENTS	52.10	July	
	201300009	10 E 400 249 132700	DIVERSIFIED BENEFIT SERVICES	I	HRA PAYMENTS	94.26	July	
	201300009	10 E 400 249 136320	DIVERSIFIED BENEFIT SERVICES	I	HRA PAYMENTS	50.12	July	
	201300009	10 E 700 249 172000	DIVERSIFIED BENEFIT SERVICES	I	HRA PAYMENTS	73.68	July	
	201300009	10 E 800 249 211100	DIVERSIFIED BENEFIT SERVICES	I	HRA PAYMENTS	32.03	July	
	201300009	10 E 800 249 214400	DIVERSIFIED BENEFIT SERVICES	I	HRA PAYMENTS	38.22	July	
	201300009	10 E 800 249 221910	DIVERSIFIED BENEFIT SERVICES	I	HRA PAYMENTS	100.41	July	
	201300009	10 E 800 249 223100	DIVERSIFIED BENEFIT SERVICES	I	HRA PAYMENTS	30.71	July	
	201300009	10 E 800 249 232100	DIVERSIFIED BENEFIT SERVICES	I	HRA PAYMENTS	108.57	July	
	201300009	10 E 800 249 252000	DIVERSIFIED BENEFIT SERVICES	I	HRA PAYMENTS	86.43	July	
	201300009	10 E 800 249 254200	DIVERSIFIED BENEFIT SERVICES	I	HRA PAYMENTS	52.10	July	
	201300009	10 E 800 249 254300	DIVERSIFIED BENEFIT SERVICES	I	HRA PAYMENTS	53.92	July	
	201300009	10 E 800 249 122000	DIVERSIFIED BENEFIT SERVICES	I	HRA PAYMENTS	71.04	July	
	201300009	10 E 800 249 239000	DIVERSIFIED BENEFIT SERVICES	I	HRA PAYMENTS	1.63	July	
	201300009	27 E 700 249 152000	DIVERSIFIED BENEFIT SERVICES	I	HRA PAYMENTS	73.68	July	
	201300009	27 E 700 249 158100	DIVERSIFIED BENEFIT SERVICES	I	HRA PAYMENTS	16.75	July	
	201300009	27 E 700 249 158310	DIVERSIFIED BENEFIT SERVICES	I	HRA PAYMENTS	57.80	July	
	201300009	27 E 700 249 158320	DIVERSIFIED BENEFIT SERVICES	I	HRA PAYMENTS	57.64	July	
	201300009	27 E 700 249 158330	DIVERSIFIED BENEFIT SERVICES	I	HRA PAYMENTS	14.64	July	
	201300009	27 E 700 249 158340	DIVERSIFIED BENEFIT SERVICES	I	HRA PAYMENTS	11.28	July	
	201300009	27 E 700 249 158510	DIVERSIFIED BENEFIT SERVICES	I	HRA PAYMENTS	4.60	July	

CHECK	CHECK ACCOUNT					INVOICE			POST
DATE	NUMBER	NUMBER			VENDOR	DESCRIPTION	AMOUNT	MONTH	
07/12/2013	201300009	27 E 700 249 158520	DIVERSIFIED BENEFIT SERVICES	I	HRA PAYMENTS		57.65	July	
	201300009	27 E 700 249 158530	DIVERSIFIED BENEFIT SERVICES	I	HRA PAYMENTS		57.74	July	
	201300009	27 E 700 249 158710	DIVERSIFIED BENEFIT SERVICES	I	HRA PAYMENTS		73.98	July	
	201300009	27 E 700 249 158730	DIVERSIFIED BENEFIT SERVICES	I	HRA PAYMENTS		57.69	July	
	201300009	27 E 700 249 158750	DIVERSIFIED BENEFIT SERVICES	I	HRA PAYMENTS		57.73	July	
	201300009	27 E 700 249 158760	DIVERSIFIED BENEFIT SERVICES	I	HRA PAYMENTS		57.75	July	
	201300009	27 E 700 249 159110	DIVERSIFIED BENEFIT SERVICES	I	HRA PAYMENTS		679.68	July	
	201300009	27 E 700 249 213000	DIVERSIFIED BENEFIT SERVICES	I	HRA PAYMENTS		21.44	July	
	201300009	27 E 700 249 214400	DIVERSIFIED BENEFIT SERVICES	I	HRA PAYMENTS		15.61	July	
	201300009	27 E 700 249 223300	DIVERSIFIED BENEFIT SERVICES	I	HRA PAYMENTS		27.22	July	
	201300009	27 E 700 249 223300	DIVERSIFIED BENEFIT SERVICES	I	HRA PAYMENTS		40.22	July	
	201300009	10 E 100 249 110300	DIVERSIFIED BENEFIT SERVICES	I	HRA PAYMENTS		57.60	July	
			Totals for 201300009					7,265.08	
07/12/2013	201300010	10 E 100 249 110000	DIVERSIFIED BENEFIT SERVICES	I	HRA PAYMENTS		103.84	July	
	201300010	10 E 100 249 110100	DIVERSIFIED BENEFIT SERVICES	I	HRA PAYMENTS		154.45	July	
	201300010	10 E 100 249 110101	DIVERSIFIED BENEFIT SERVICES	I	HRA PAYMENTS		225.83	July	
	201300010	10 E 100 249 110200	DIVERSIFIED BENEFIT SERVICES	I	HRA PAYMENTS		137.24	July	
	201300010	10 E 100 249 110300	DIVERSIFIED BENEFIT SERVICES	I	HRA PAYMENTS		161.72	July	
	201300010	10 E 100 249 110400	DIVERSIFIED BENEFIT SERVICES	I	HRA PAYMENTS		92.40	July	
	201300010	10 E 100 249 143000	DIVERSIFIED BENEFIT SERVICES	I	HRA PAYMENTS		29.34	July	
	201300010	10 E 100 249 213000	DIVERSIFIED BENEFIT SERVICES	I	HRA PAYMENTS		43.93	July	
	201300010	10 E 100 249 222200	DIVERSIFIED BENEFIT SERVICES	I	HRA PAYMENTS		33.55	July	
	201300010	10 E 100 249 241000	DIVERSIFIED BENEFIT SERVICES	I	HRA PAYMENTS		160.05	July	
	201300010	10 E 100 249 253300	DIVERSIFIED BENEFIT SERVICES	I	HRA PAYMENTS		52.93	July	
	201300010	10 E 100 249 110100	DIVERSIFIED BENEFIT SERVICES	I	HRA PAYMENTS		45.83	July	
	201300010	10 E 100 249 110101	DIVERSIFIED BENEFIT SERVICES	I	HRA PAYMENTS		48.24	July	
	201300010	10 E 100 249 110200	DIVERSIFIED BENEFIT SERVICES	I	HRA PAYMENTS		77.05	July	
	201300010	10 E 100 249 110300	DIVERSIFIED BENEFIT SERVICES	I	HRA PAYMENTS		38.52	July	
	201300010	10 E 200 249 120000	DIVERSIFIED BENEFIT SERVICES	I	HRA PAYMENTS		18.21	July	
	201300010	10 E 200 249 120500	DIVERSIFIED BENEFIT SERVICES	I	HRA PAYMENTS		104.34	July	
	201300010	10 E 200 249 120600	DIVERSIFIED BENEFIT SERVICES	I	HRA PAYMENTS		88.02	July	
	201300010	10 E 200 249 121000	DIVERSIFIED BENEFIT SERVICES	I	HRA PAYMENTS		5.61	July	
	201300010	10 E 200 249 122000	DIVERSIFIED BENEFIT SERVICES	I	HRA PAYMENTS		109.85	July	
	201300010	10 E 200 249 123000	DIVERSIFIED BENEFIT SERVICES	I	HRA PAYMENTS		10.04	July	
	201300010	10 E 200 249 124000	DIVERSIFIED BENEFIT SERVICES	I	HRA PAYMENTS		43.32	July	
	201300010	10 E 200 249 125400	DIVERSIFIED BENEFIT SERVICES	I	HRA PAYMENTS		2.16	July	
	201300010	10 E 200 249 125500	DIVERSIFIED BENEFIT SERVICES	I	HRA PAYMENTS		19.29	July	
	201300010	10 E 200 249 125510	DIVERSIFIED BENEFIT SERVICES	I	HRA PAYMENTS		38.71	July	
	201300010	10 E 200 249 126000	DIVERSIFIED BENEFIT SERVICES	I	HRA PAYMENTS		50.37	July	
	201300010	10 E 200 249 127000	DIVERSIFIED BENEFIT SERVICES	I	HRA PAYMENTS		69.53	July	
	201300010	10 E 200 249 132700	DIVERSIFIED BENEFIT SERVICES	I	HRA PAYMENTS		21.81	July	
	201300010	10 E 200 249 136320	DIVERSIFIED BENEFIT SERVICES	I	HRA PAYMENTS		5.01	July	
	201300010	10 E 200 249 141000	DIVERSIFIED BENEFIT SERVICES	I	HRA PAYMENTS		4.82	July	
	201300010	10 E 200 249 143000	DIVERSIFIED BENEFIT SERVICES	I	HRA PAYMENTS		39.87	July	
	201300010	10 E 200 249 213000	DIVERSIFIED BENEFIT SERVICES	I	HRA PAYMENTS		77.18	July	
	201300010	10 E 200 249 222200	DIVERSIFIED BENEFIT SERVICES	I	HRA PAYMENTS		64.41	July	
	201300010	10 E 200 249 241000	DIVERSIFIED BENEFIT SERVICES	I	HRA PAYMENTS		100.48	July	
	201300010	10 E 200 249 241100	DIVERSIFIED BENEFIT SERVICES	I	HRA PAYMENTS		0.82	July	
	201300010	10 E 200 249 253300	DIVERSIFIED BENEFIT SERVICES	I	HRA PAYMENTS		71.55	July	
	201300010	10 E 200 249 254300	DIVERSIFIED BENEFIT SERVICES	I	HRA PAYMENTS		34.85	July	
	201300010	10 E 400 249 121000	DIVERSIFIED BENEFIT SERVICES	I	HRA PAYMENTS		28.53	July	
	201300010	10 E 400 249 122000	DIVERSIFIED BENEFIT SERVICES	I	HRA PAYMENTS		154.37	July	
	201300010	10 E 400 249 123000	DIVERSIFIED BENEFIT SERVICES	I	HRA PAYMENTS		67.23	July	
	201300010	10 E 400 249 124000	DIVERSIFIED BENEFIT SERVICES	I	HRA PAYMENTS		89.40	July	
	201300010	10 E 400 249 125400	DIVERSIFIED BENEFIT SERVICES	I	HRA PAYMENTS		2.16	July	

CHECK	CHECK ACCOUNT			INVOICE			POST
DATE	NUMBER	NUMBER	VENDOR	DESCRIPTION	AMOUNT	MONTH	
07/12/2013	201300010	10 E 400 249 125500	DIVERSIFIED BENEFIT SERVICES I	HRA PAYMENTS	19.29	July	
	201300010	10 E 400 249 126000	DIVERSIFIED BENEFIT SERVICES I	HRA PAYMENTS	129.16	July	
	201300010	10 E 400 249 127000	DIVERSIFIED BENEFIT SERVICES I	HRA PAYMENTS	125.20	July	
	201300010	10 E 400 249 141000	DIVERSIFIED BENEFIT SERVICES I	HRA PAYMENTS	7.32	July	
	201300010	10 E 400 249 143000	DIVERSIFIED BENEFIT SERVICES I	HRA PAYMENTS	40.26	July	
	201300010	10 E 400 249 213000	DIVERSIFIED BENEFIT SERVICES I	HRA PAYMENTS	54.29	July	
	201300010	10 E 400 249 222200	DIVERSIFIED BENEFIT SERVICES I	HRA PAYMENTS	64.32	July	
	201300010	10 E 400 249 241000	DIVERSIFIED BENEFIT SERVICES I	HRA PAYMENTS	94.48	July	
	201300010	10 E 400 249 241100	DIVERSIFIED BENEFIT SERVICES I	HRA PAYMENTS	2.59	July	
	201300010	10 E 400 249 253300	DIVERSIFIED BENEFIT SERVICES I	HRA PAYMENTS	66.24	July	
	201300010	10 E 400 249 254300	DIVERSIFIED BENEFIT SERVICES I	HRA PAYMENTS	34.85	July	
	201300010	10 E 400 249 132700	DIVERSIFIED BENEFIT SERVICES I	HRA PAYMENTS	63.04	July	
	201300010	10 E 400 249 136320	DIVERSIFIED BENEFIT SERVICES I	HRA PAYMENTS	33.52	July	
	201300010	10 E 700 249 172000	DIVERSIFIED BENEFIT SERVICES I	HRA PAYMENTS	49.28	July	
	201300010	10 E 800 249 211100	DIVERSIFIED BENEFIT SERVICES I	HRA PAYMENTS	21.42	July	
	201300010	10 E 800 249 214400	DIVERSIFIED BENEFIT SERVICES I	HRA PAYMENTS	25.56	July	
	201300010	10 E 800 249 221910	DIVERSIFIED BENEFIT SERVICES I	HRA PAYMENTS	67.16	July	
	201300010	10 E 800 249 223100	DIVERSIFIED BENEFIT SERVICES I	HRA PAYMENTS	20.54	July	
	201300010	10 E 800 249 232100	DIVERSIFIED BENEFIT SERVICES I	HRA PAYMENTS	72.61	July	
	201300010	10 E 800 249 252000	DIVERSIFIED BENEFIT SERVICES I	HRA PAYMENTS	57.80	July	
	201300010	10 E 800 249 254200	DIVERSIFIED BENEFIT SERVICES I	HRA PAYMENTS	34.84	July	
	201300010	10 E 800 249 254300	DIVERSIFIED BENEFIT SERVICES I	HRA PAYMENTS	36.06	July	
	201300010	10 E 800 249 122000	DIVERSIFIED BENEFIT SERVICES I	HRA PAYMENTS	47.51	July	
	201300010	10 E 800 249 239000	DIVERSIFIED BENEFIT SERVICES I	HRA PAYMENTS	1.09	July	
	201300010	27 E 700 249 152000	DIVERSIFIED BENEFIT SERVICES I	HRA PAYMENTS	49.28	July	
	201300010	27 E 700 249 158100	DIVERSIFIED BENEFIT SERVICES I	HRA PAYMENTS	11.20	July	
	201300010	27 E 700 249 158310	DIVERSIFIED BENEFIT SERVICES I	HRA PAYMENTS	38.66	July	
	201300010	27 E 700 249 158320	DIVERSIFIED BENEFIT SERVICES I	HRA PAYMENTS	38.55	July	
	201300010	27 E 700 249 158330	DIVERSIFIED BENEFIT SERVICES I	HRA PAYMENTS	9.79	July	
	201300010	27 E 700 249 158340	DIVERSIFIED BENEFIT SERVICES I	HRA PAYMENTS	7.55	July	
	201300010	27 E 700 249 158510	DIVERSIFIED BENEFIT SERVICES I	HRA PAYMENTS	3.08	July	
	201300010	27 E 700 249 158520	DIVERSIFIED BENEFIT SERVICES I	HRA PAYMENTS	38.55	July	
	201300010	27 E 700 249 158530	DIVERSIFIED BENEFIT SERVICES I	HRA PAYMENTS	38.61	July	
	201300010	27 E 700 249 158710	DIVERSIFIED BENEFIT SERVICES I	HRA PAYMENTS	49.48	July	
	201300010	27 E 700 249 158730	DIVERSIFIED BENEFIT SERVICES I	HRA PAYMENTS	38.58	July	
	201300010	27 E 700 249 158750	DIVERSIFIED BENEFIT SERVICES I	HRA PAYMENTS	38.61	July	
	201300010	27 E 700 249 158760	DIVERSIFIED BENEFIT SERVICES I	HRA PAYMENTS	38.62	July	
	201300010	27 E 700 249 159110	DIVERSIFIED BENEFIT SERVICES I	HRA PAYMENTS	454.56	July	
	201300010	27 E 700 249 213000	DIVERSIFIED BENEFIT SERVICES I	HRA PAYMENTS	14.34	July	
	201300010	27 E 700 249 214400	DIVERSIFIED BENEFIT SERVICES I	HRA PAYMENTS	10.44	July	
	201300010	27 E 700 249 223300	DIVERSIFIED BENEFIT SERVICES I	HRA PAYMENTS	18.21	July	
	201300010	27 E 700 249 223300	DIVERSIFIED BENEFIT SERVICES I	HRA PAYMENTS	26.90	July	
	201300010	10 E 100 249 110300	DIVERSIFIED BENEFIT SERVICES I	HRA PAYMENTS	38.48	July	
				Totals for 201300010	4,858.78		
07/12/2013	201300011	10 L 000 000 811614	DIVERSIFIED BENEFIT SERVICES I	Flex plan charges	69.79	July	
				Totals for 201300011	69.79		
07/12/2013	201300012	10 L 000 000 811614	DIVERSIFIED BENEFIT SERVICES I	Flex plan charges	222.37	July	
				Totals for 201300012	222.37		
07/12/2013	201300013	10 E 800 358 221910	CHARTER COMMUNICATIONS	INTERNET - DAHL	58.01	July	
				Totals for 201300013	58.01		
07/12/2013	201300014	10 E 100 320 254490	E O JOHNSON COMPANY	Printer/copier lease	2,133.99	July	
	201300014	10 E 200 320 254490	E O JOHNSON COMPANY	Printer/copier lease	1,467.20	July	

CHECK	CHECK ACCOUNT			INVOICE			POST
DATE	NUMBER	NUMBER	VENDOR	DESCRIPTION	AMOUNT	MONTH	
07/12/2013	201300014	10 E 400 320 254490	E O JOHNSON COMPANY	Printer/copier lease	2,254.79	July	
	201300014	10 E 800 320 254490	E O JOHNSON COMPANY	Printer/copier lease	189.73	July	
	201300014	50 E 800 320 257220	E O JOHNSON COMPANY	Printer/copier lease	54.90	July	
				Totals for 201300014	6,100.61		
07/12/2013	201300015	10 E 100 331 253300	XCEL ENERGY	MONTHLY UTILITIES-EARLY CHILDHOOD & Storage	21.30	July	
	201300015	10 E 100 336 253300	XCEL ENERGY	MONTHLY UTILITIES-EARLY CHILDHOOD & Storage	271.86	July	
	201300015	10 E 400 331 253300	XCEL ENERGY	MONTHLY UTILITIES-EARLY CHILDHOOD & Storage	53.18	July	
	201300015	10 E 400 336 253300	XCEL ENERGY	MONTHLY UTILITIES-EARLY CHILDHOOD & Storage	66.64	July	
				Totals for 201300015	412.98		
07/12/2013	201300016	10 E 100 331 253300	XCEL ENERGY	MONTHLY UTILITIES	207.99	July	
	201300016	10 E 100 336 253300	XCEL ENERGY	MONTHLY UTILITIES	4,071.37	July	
	201300016	10 E 200 331 253300	XCEL ENERGY	MONTHLY UTILITIES	135.78	July	
	201300016	10 E 200 336 253300	XCEL ENERGY	MONTHLY UTILITIES	4,841.41	July	
	201300016	10 E 400 331 253300	XCEL ENERGY	MONTHLY UTILITIES	337.26	July	
	201300016	10 E 400 336 253300	XCEL ENERGY	MONTHLY UTILITIES	6,198.16	July	
				Totals for 201300016	15,791.97		
07/12/2013	201300017	10 E 800 355 263300	AT&T	Early Childhood	91.84	July	
				Totals for 201300017	91.84		
07/12/2013	201300018	10 E 800 355 263300	AT&T	DO fax	255.97	July	
				Totals for 201300018	255.97		
07/12/2013	201300019	10 E 100 310 254300	WM OF NORTHERN WISCONSIN, INC	Garbage pickup	515.92	July	
	201300019	10 E 200 310 254300	WM OF NORTHERN WISCONSIN, INC	Garbage pickup	515.92	July	
	201300019	10 E 400 310 254300	WM OF NORTHERN WISCONSIN, INC	Garbage pickup	515.93	July	
				Totals for 201300019	1,547.77		
07/12/2013	201300020	10 E 800 411 252000	MAGIC-WRIGHTER	Service fees	4.00	July	
				Totals for 201300020	4.00		
07/12/2013	201300021	10 E 800 411 252000	WELLS FARGO BANK	Service fees	620.01	July	
				Totals for 201300021	620.01		
07/23/2013	201300022	10 L 000 000 811611	WELLS FARGO BANK	Payroll accrual	1,133.29	July	
	201300022	27 L 000 000 811611	WELLS FARGO BANK	Payroll accrual	45.77	July	
	201300022	50 L 000 000 811611	WELLS FARGO BANK	Payroll accrual	29.38	July	
	201300022	10 L 000 000 811612	WELLS FARGO BANK	Payroll accrual	160.00	July	
	201300022	10 L 000 000 811612	WELLS FARGO BANK	Payroll accrual	6,592.46	July	
	201300022	27 L 000 000 811612	WELLS FARGO BANK	Payroll accrual	198.39	July	
	201300022	50 L 000 000 811612	WELLS FARGO BANK	Payroll accrual	287.14	July	
	201300022	10 L 000 000 811611	WELLS FARGO BANK	Payroll accrual	4,845.74	July	
	201300022	27 L 000 000 811611	WELLS FARGO BANK	Payroll accrual	195.69	July	
	201300022	50 L 000 000 811611	WELLS FARGO BANK	Payroll accrual	125.63	July	
				Totals for 201300022	13,613.49		
07/23/2013	201300023	10 L 000 000 811611	WELLS FARGO BANK	Payroll accrual	4,845.74	July	
	201300023	27 L 000 000 811611	WELLS FARGO BANK	Payroll accrual	195.69	July	
	201300023	50 L 000 000 811611	WELLS FARGO BANK	Payroll accrual	125.63	July	
	201300023	10 L 000 000 811611	WELLS FARGO BANK	Payroll accrual	1,133.29	July	

CHECK DATE	CHECK ACCOUNT		VENDOR	INVOICE DESCRIPTION	AMOUNT	POST MONTH
	NUMBER	NUMBER				
07/23/2013	201300023	27 L 000 000	811611 WELLS FARGO BANK	Payroll accrual	45.77	July
	201300023	50 L 000 000	811611 WELLS FARGO BANK	Payroll accrual	29.38	July
				Totals for 201300023	6,375.50	
07/23/2013	201300024	10 L 000 000	811613 WISCONSIN DEPT OF REVENUE	Payroll accrual	20.00	July
	201300024	50 L 000 000	811613 WISCONSIN DEPT OF REVENUE	Payroll accrual	55.00	July
	201300024	10 L 000 000	811613 WISCONSIN DEPT OF REVENUE	Payroll accrual	3,586.60	July
	201300024	27 L 000 000	811613 WISCONSIN DEPT OF REVENUE	Payroll accrual	144.70	July
	201300024	50 L 000 000	811613 WISCONSIN DEPT OF REVENUE	Payroll accrual	115.38	July
				Totals for 201300024	3,921.68	
07/23/2013	201300025	10 L 000 000	811621 WISCONSIN RETIREMENT SYSTEM	Payroll accrual	2,302.07	July
	201300025	27 L 000 000	811621 WISCONSIN RETIREMENT SYSTEM	Payroll accrual	122.37	July
	201300025	10 L 000 000	811621 WISCONSIN RETIREMENT SYSTEM	Payroll accrual	2,302.07	July
	201300025	27 L 000 000	811621 WISCONSIN RETIREMENT SYSTEM	Payroll accrual	122.37	July
	201300025	10 L 000 000	811622 WISCONSIN RETIREMENT SYSTEM	Payroll accrual	2,260.48	July
	201300025	27 L 000 000	811622 WISCONSIN RETIREMENT SYSTEM	Payroll accrual	70.02	July
	201300025	50 L 000 000	811622 WISCONSIN RETIREMENT SYSTEM	Payroll accrual	107.52	July
	201300025	10 L 000 000	811622 WISCONSIN RETIREMENT SYSTEM	Payroll accrual	2,260.48	July
	201300025	27 L 000 000	811622 WISCONSIN RETIREMENT SYSTEM	Payroll accrual	70.02	July
	201300025	50 L 000 000	811622 WISCONSIN RETIREMENT SYSTEM	Payroll accrual	107.52	July
				Totals for 201300025	9,724.92	
07/23/2013	201300026	10 L 000 000	811691 WEA TRUST ADVANTAGE	Payroll accrual	324.00	July
	201300026	10 L 000 000	811691 WEA TRUST ADVANTAGE	Payroll accrual	200.00	July
	201300026	10 L 000 000	811691 WEA TRUST ADVANTAGE	Payroll accrual	20.00	July
				Totals for 201300026	544.00	
07/23/2013	201300027	10 A 000 000	711100 WELLS FARGO BANK/NET PR & DIRE	PR & DIRECT DEPOSIT 07/23/13 (12 MO)	56,343.48	July
	201300027	27 A 000 000	711100 WELLS FARGO BANK/NET PR & DIRE	PR & DIRECT DEPOSIT 07/23/13 (12 MO)	2,369.53	July
	201300027	50 A 000 000	711100 WELLS FARGO BANK/NET PR & DIRE	PR & DIRECT DEPOSIT 07/23/13 (12 MO)	1,306.25	July
				Totals for 201300027	60,019.26	
07/16/2013	201300028	10 E 800 411	252000 WELLS FARGO BANK	Panini - check scanner	1,295.16	July
				Totals for 201300028	1,295.16	
07/16/2013	201300029	10 E 800 682	283000 WELLS FARGO BANK	Interest on line of credit	2,361.11	July
				Totals for 201300029	2,361.11	
07/16/2013	201300030	10 E 100 249	110000 DIVERSIFIED BENEFIT SERVICES I	HRA PAYMENTS	155.83	July
	201300030	10 E 100 249	110100 DIVERSIFIED BENEFIT SERVICES I	HRA PAYMENTS	231.78	July
	201300030	10 E 100 249	110101 DIVERSIFIED BENEFIT SERVICES I	HRA PAYMENTS	338.90	July
	201300030	10 E 100 249	110200 DIVERSIFIED BENEFIT SERVICES I	HRA PAYMENTS	205.96	July
	201300030	10 E 100 249	110300 DIVERSIFIED BENEFIT SERVICES I	HRA PAYMENTS	242.68	July
	201300030	10 E 100 249	143000 DIVERSIFIED BENEFIT SERVICES I	HRA PAYMENTS	44.03	July
	201300030	10 E 100 249	213000 DIVERSIFIED BENEFIT SERVICES I	HRA PAYMENTS	65.93	July
	201300030	10 E 100 249	222200 DIVERSIFIED BENEFIT SERVICES I	HRA PAYMENTS	50.34	July
	201300030	10 E 100 249	241000 DIVERSIFIED BENEFIT SERVICES I	HRA PAYMENTS	240.18	July
	201300030	10 E 100 249	253300 DIVERSIFIED BENEFIT SERVICES I	HRA PAYMENTS	79.43	July
	201300030	10 E 100 249	110100 DIVERSIFIED BENEFIT SERVICES I	HRA PAYMENTS	68.77	July
	201300030	10 E 100 249	110101 DIVERSIFIED BENEFIT SERVICES I	HRA PAYMENTS	72.39	July
	201300030	10 E 100 249	110200 DIVERSIFIED BENEFIT SERVICES I	HRA PAYMENTS	115.63	July
	201300030	10 E 100 249	110300 DIVERSIFIED BENEFIT SERVICES I	HRA PAYMENTS	57.81	July

CHECK	CHECK ACCOUNT					INVOICE			POST
DATE	NUMBER	NUMBER			VENDOR	DESCRIPTION	AMOUNT	MONTH	
07/16/2013	201300030	10 E 200 249	120000		DIVERSIFIED BENEFIT SERVICES I	HRA PAYMENTS	27.33	July	
	201300030	10 E 200 249	120600		DIVERSIFIED BENEFIT SERVICES I	HRA PAYMENTS	132.09	July	
	201300030	10 E 200 249	121000		DIVERSIFIED BENEFIT SERVICES I	HRA PAYMENTS	8.41	July	
	201300030	10 E 200 249	122000		DIVERSIFIED BENEFIT SERVICES I	HRA PAYMENTS	164.85	July	
	201300030	10 E 200 249	123000		DIVERSIFIED BENEFIT SERVICES I	HRA PAYMENTS	15.07	July	
	201300030	10 E 200 249	124000		DIVERSIFIED BENEFIT SERVICES I	HRA PAYMENTS	65.01	July	
	201300030	10 E 200 249	125400		DIVERSIFIED BENEFIT SERVICES I	HRA PAYMENTS	3.24	July	
	201300030	10 E 200 249	125500		DIVERSIFIED BENEFIT SERVICES I	HRA PAYMENTS	28.94	July	
	201300030	10 E 200 249	125510		DIVERSIFIED BENEFIT SERVICES I	HRA PAYMENTS	58.09	July	
	201300030	10 E 200 249	126000		DIVERSIFIED BENEFIT SERVICES I	HRA PAYMENTS	75.60	July	
	201300030	10 E 200 249	127000		DIVERSIFIED BENEFIT SERVICES I	HRA PAYMENTS	104.33	July	
	201300030	10 E 200 249	132700		DIVERSIFIED BENEFIT SERVICES I	HRA PAYMENTS	32.73	July	
	201300030	10 E 200 249	136320		DIVERSIFIED BENEFIT SERVICES I	HRA PAYMENTS	7.52	July	
	201300030	10 E 200 249	141000		DIVERSIFIED BENEFIT SERVICES I	HRA PAYMENTS	7.23	July	
	201300030	10 E 200 249	143000		DIVERSIFIED BENEFIT SERVICES I	HRA PAYMENTS	59.84	July	
	201300030	10 E 200 249	213000		DIVERSIFIED BENEFIT SERVICES I	HRA PAYMENTS	115.83	July	
	201300030	10 E 200 249	222200		DIVERSIFIED BENEFIT SERVICES I	HRA PAYMENTS	96.66	July	
	201300030	10 E 200 249	241000		DIVERSIFIED BENEFIT SERVICES I	HRA PAYMENTS	150.78	July	
	201300030	10 E 200 249	241100		DIVERSIFIED BENEFIT SERVICES I	HRA PAYMENTS	1.23	July	
	201300030	10 E 200 249	253300		DIVERSIFIED BENEFIT SERVICES I	HRA PAYMENTS	107.37	July	
	201300030	10 E 200 249	254300		DIVERSIFIED BENEFIT SERVICES I	HRA PAYMENTS	52.29	July	
	201300030	10 E 400 249	121000		DIVERSIFIED BENEFIT SERVICES I	HRA PAYMENTS	42.81	July	
	201300030	10 E 400 249	122000		DIVERSIFIED BENEFIT SERVICES I	HRA PAYMENTS	231.66	July	
	201300030	10 E 400 249	123000		DIVERSIFIED BENEFIT SERVICES I	HRA PAYMENTS	100.88	July	
	201300030	10 E 400 249	124000		DIVERSIFIED BENEFIT SERVICES I	HRA PAYMENTS	134.16	July	
	201300030	10 E 400 249	125400		DIVERSIFIED BENEFIT SERVICES I	HRA PAYMENTS	3.24	July	
	201300030	10 E 400 249	125500		DIVERSIFIED BENEFIT SERVICES I	HRA PAYMENTS	28.94	July	
	201300030	10 E 400 249	126000		DIVERSIFIED BENEFIT SERVICES I	HRA PAYMENTS	193.83	July	
	201300030	10 E 400 249	127000		DIVERSIFIED BENEFIT SERVICES I	HRA PAYMENTS	187.88	July	
	201300030	10 E 400 249	141000		DIVERSIFIED BENEFIT SERVICES I	HRA PAYMENTS	10.98	July	
	201300030	10 E 400 249	143000		DIVERSIFIED BENEFIT SERVICES I	HRA PAYMENTS	60.42	July	
	201300030	10 E 400 249	213000		DIVERSIFIED BENEFIT SERVICES I	HRA PAYMENTS	81.47	July	
	201300030	10 E 400 249	222200		DIVERSIFIED BENEFIT SERVICES I	HRA PAYMENTS	96.53	July	
	201300030	10 E 400 249	241000		DIVERSIFIED BENEFIT SERVICES I	HRA PAYMENTS	141.79	July	
	201300030	10 E 400 249	241100		DIVERSIFIED BENEFIT SERVICES I	HRA PAYMENTS	3.89	July	
	201300030	10 E 400 249	253300		DIVERSIFIED BENEFIT SERVICES I	HRA PAYMENTS	99.41	July	
	201300030	10 E 400 249	254300		DIVERSIFIED BENEFIT SERVICES I	HRA PAYMENTS	52.29	July	
	201300030	10 E 400 249	132700		DIVERSIFIED BENEFIT SERVICES I	HRA PAYMENTS	94.60	July	
	201300030	10 E 400 249	136320		DIVERSIFIED BENEFIT SERVICES I	HRA PAYMENTS	50.31	July	
	201300030	10 E 700 249	172000		DIVERSIFIED BENEFIT SERVICES I	HRA PAYMENTS	73.95	July	
	201300030	10 E 800 249	211100		DIVERSIFIED BENEFIT SERVICES I	HRA PAYMENTS	32.14	July	
	201300030	10 E 800 249	214400		DIVERSIFIED BENEFIT SERVICES I	HRA PAYMENTS	38.35	July	
	201300030	10 E 800 249	221910		DIVERSIFIED BENEFIT SERVICES I	HRA PAYMENTS	100.78	July	
	201300030	10 E 800 249	223100		DIVERSIFIED BENEFIT SERVICES I	HRA PAYMENTS	30.82	July	
	201300030	10 E 800 249	232100		DIVERSIFIED BENEFIT SERVICES I	HRA PAYMENTS	108.96	July	
	201300030	10 E 800 249	252000		DIVERSIFIED BENEFIT SERVICES I	HRA PAYMENTS	86.74	July	
	201300030	10 E 800 249	254200		DIVERSIFIED BENEFIT SERVICES I	HRA PAYMENTS	52.28	July	
	201300030	10 E 800 249	254300		DIVERSIFIED BENEFIT SERVICES I	HRA PAYMENTS	54.12	July	
	201300030	10 E 800 249	239000		DIVERSIFIED BENEFIT SERVICES I	HRA PAYMENTS	1.64	July	
	201300030	27 E 700 249	152000		DIVERSIFIED BENEFIT SERVICES I	HRA PAYMENTS	73.95	July	
	201300030	27 E 700 249	158100		DIVERSIFIED BENEFIT SERVICES I	HRA PAYMENTS	16.81	July	
	201300030	27 E 700 249	158320		DIVERSIFIED BENEFIT SERVICES I	HRA PAYMENTS	57.85	July	
	201300030	27 E 700 249	158330		DIVERSIFIED BENEFIT SERVICES I	HRA PAYMENTS	14.70	July	
	201300030	27 E 700 249	158340		DIVERSIFIED BENEFIT SERVICES I	HRA PAYMENTS	11.33	July	
	201300030	27 E 700 249	158510		DIVERSIFIED BENEFIT SERVICES I	HRA PAYMENTS	4.61	July	
	201300030	27 E 700 249	158520		DIVERSIFIED BENEFIT SERVICES I	HRA PAYMENTS	57.85	July	

CHECK	CHECK ACCOUNT	INVOICE	POST			
DATE	NUMBER	NUMBER	VENDOR	DESCRIPTION	AMOUNT	MONTH
07/16/2013	201300030	27 E 700 249 158530	DIVERSIFIED BENEFIT SERVICES I	HRA PAYMENTS	57.94	July
	201300030	27 E 700 249 158710	DIVERSIFIED BENEFIT SERVICES I	HRA PAYMENTS	74.25	July
	201300030	27 E 700 249 158730	DIVERSIFIED BENEFIT SERVICES I	HRA PAYMENTS	57.90	July
	201300030	27 E 700 249 158750	DIVERSIFIED BENEFIT SERVICES I	HRA PAYMENTS	57.94	July
	201300030	27 E 700 249 158760	DIVERSIFIED BENEFIT SERVICES I	HRA PAYMENTS	57.96	July
	201300030	27 E 700 249 159110	DIVERSIFIED BENEFIT SERVICES I	HRA PAYMENTS	682.14	July
	201300030	27 E 700 249 213000	DIVERSIFIED BENEFIT SERVICES I	HRA PAYMENTS	21.51	July
	201300030	27 E 700 249 214400	DIVERSIFIED BENEFIT SERVICES I	HRA PAYMENTS	15.67	July
	201300030	27 E 700 249 223300	DIVERSIFIED BENEFIT SERVICES I	HRA PAYMENTS	27.32	July
	201300030	27 E 700 249 223300	DIVERSIFIED BENEFIT SERVICES I	HRA PAYMENTS	40.36	July
	201300030	10 E 100 249 110300	DIVERSIFIED BENEFIT SERVICES I	HRA PAYMENTS	57.78	July
	201300030	10 E 150 249 110450	DIVERSIFIED BENEFIT SERVICES I	HRA PAYMENTS	295.24	July
	201300030	27 E 700 249 158310	DIVERSIFIED BENEFIT SERVICES I	HRA PAYMENTS	58.01	July
	201300030	10 E 100 249 122000	DIVERSIFIED BENEFIT SERVICES I	HRA PAYMENTS	71.30	July
	201300030	10 E 100 249 110000	DIVERSIFIED BENEFIT SERVICES I	HRA PAYMENTS	-155.83	July
	201300030	10 E 100 249 110100	DIVERSIFIED BENEFIT SERVICES I	HRA PAYMENTS	-231.78	July
	201300030	10 E 100 249 110101	DIVERSIFIED BENEFIT SERVICES I	HRA PAYMENTS	-338.90	July
	201300030	10 E 100 249 110200	DIVERSIFIED BENEFIT SERVICES I	HRA PAYMENTS	-205.96	July
	201300030	10 E 100 249 110300	DIVERSIFIED BENEFIT SERVICES I	HRA PAYMENTS	-242.68	July
	201300030	10 E 100 249 143000	DIVERSIFIED BENEFIT SERVICES I	HRA PAYMENTS	-44.03	July
	201300030	10 E 100 249 213000	DIVERSIFIED BENEFIT SERVICES I	HRA PAYMENTS	-65.93	July
	201300030	10 E 100 249 222200	DIVERSIFIED BENEFIT SERVICES I	HRA PAYMENTS	-50.34	July
	201300030	10 E 100 249 241000	DIVERSIFIED BENEFIT SERVICES I	HRA PAYMENTS	-240.18	July
	201300030	10 E 100 249 253300	DIVERSIFIED BENEFIT SERVICES I	HRA PAYMENTS	-79.43	July
	201300030	10 E 100 249 110100	DIVERSIFIED BENEFIT SERVICES I	HRA PAYMENTS	-68.77	July
	201300030	10 E 100 249 110101	DIVERSIFIED BENEFIT SERVICES I	HRA PAYMENTS	-72.39	July
	201300030	10 E 100 249 110200	DIVERSIFIED BENEFIT SERVICES I	HRA PAYMENTS	-115.63	July
	201300030	10 E 100 249 110300	DIVERSIFIED BENEFIT SERVICES I	HRA PAYMENTS	-57.81	July
	201300030	10 E 200 249 120000	DIVERSIFIED BENEFIT SERVICES I	HRA PAYMENTS	-27.33	July
	201300030	10 E 200 249 120600	DIVERSIFIED BENEFIT SERVICES I	HRA PAYMENTS	-132.09	July
	201300030	10 E 200 249 121000	DIVERSIFIED BENEFIT SERVICES I	HRA PAYMENTS	-8.41	July
	201300030	10 E 200 249 122000	DIVERSIFIED BENEFIT SERVICES I	HRA PAYMENTS	-164.85	July
	201300030	10 E 200 249 123000	DIVERSIFIED BENEFIT SERVICES I	HRA PAYMENTS	-15.07	July
	201300030	10 E 200 249 124000	DIVERSIFIED BENEFIT SERVICES I	HRA PAYMENTS	-65.01	July
	201300030	10 E 200 249 125400	DIVERSIFIED BENEFIT SERVICES I	HRA PAYMENTS	-3.24	July
	201300030	10 E 200 249 125500	DIVERSIFIED BENEFIT SERVICES I	HRA PAYMENTS	-28.94	July
	201300030	10 E 200 249 125510	DIVERSIFIED BENEFIT SERVICES I	HRA PAYMENTS	-58.09	July
	201300030	10 E 200 249 126000	DIVERSIFIED BENEFIT SERVICES I	HRA PAYMENTS	-75.60	July
	201300030	10 E 200 249 127000	DIVERSIFIED BENEFIT SERVICES I	HRA PAYMENTS	-104.33	July
	201300030	10 E 200 249 132700	DIVERSIFIED BENEFIT SERVICES I	HRA PAYMENTS	-32.73	July
	201300030	10 E 200 249 136320	DIVERSIFIED BENEFIT SERVICES I	HRA PAYMENTS	-7.52	July
	201300030	10 E 200 249 141000	DIVERSIFIED BENEFIT SERVICES I	HRA PAYMENTS	-7.23	July
	201300030	10 E 200 249 143000	DIVERSIFIED BENEFIT SERVICES I	HRA PAYMENTS	-59.84	July
	201300030	10 E 200 249 213000	DIVERSIFIED BENEFIT SERVICES I	HRA PAYMENTS	-115.83	July
	201300030	10 E 200 249 222200	DIVERSIFIED BENEFIT SERVICES I	HRA PAYMENTS	-96.66	July
	201300030	10 E 200 249 241000	DIVERSIFIED BENEFIT SERVICES I	HRA PAYMENTS	-150.78	July
	201300030	10 E 200 249 241100	DIVERSIFIED BENEFIT SERVICES I	HRA PAYMENTS	-1.23	July
	201300030	10 E 200 249 253300	DIVERSIFIED BENEFIT SERVICES I	HRA PAYMENTS	-107.37	July
	201300030	10 E 200 249 254300	DIVERSIFIED BENEFIT SERVICES I	HRA PAYMENTS	-52.29	July
	201300030	10 E 400 249 121000	DIVERSIFIED BENEFIT SERVICES I	HRA PAYMENTS	-42.81	July
	201300030	10 E 400 249 122000	DIVERSIFIED BENEFIT SERVICES I	HRA PAYMENTS	-231.66	July
	201300030	10 E 400 249 123000	DIVERSIFIED BENEFIT SERVICES I	HRA PAYMENTS	-100.88	July
	201300030	10 E 400 249 124000	DIVERSIFIED BENEFIT SERVICES I	HRA PAYMENTS	-134.16	July
	201300030	10 E 400 249 125400	DIVERSIFIED BENEFIT SERVICES I	HRA PAYMENTS	-3.24	July
	201300030	10 E 400 249 125500	DIVERSIFIED BENEFIT SERVICES I	HRA PAYMENTS	-28.94	July
	201300030	10 E 400 249 126000	DIVERSIFIED BENEFIT SERVICES I	HRA PAYMENTS	-193.83	July

CHECK	CHECK ACCOUNT			INVOICE			POST	
DATE	NUMBER	NUMBER	VENDOR	DESCRIPTION	AMOUNT	MONTH		
07/16/2013	201300030	10 E 400 249 127000	DIVERSIFIED BENEFIT SERVICES I	HRA PAYMENTS	-187.88	July		
	201300030	10 E 400 249 141000	DIVERSIFIED BENEFIT SERVICES I	HRA PAYMENTS	-10.98	July		
	201300030	10 E 400 249 143000	DIVERSIFIED BENEFIT SERVICES I	HRA PAYMENTS	-60.42	July		
	201300030	10 E 400 249 213000	DIVERSIFIED BENEFIT SERVICES I	HRA PAYMENTS	-81.47	July		
	201300030	10 E 400 249 222200	DIVERSIFIED BENEFIT SERVICES I	HRA PAYMENTS	-96.53	July		
	201300030	10 E 400 249 241000	DIVERSIFIED BENEFIT SERVICES I	HRA PAYMENTS	-141.79	July		
	201300030	10 E 400 249 241100	DIVERSIFIED BENEFIT SERVICES I	HRA PAYMENTS	-3.89	July		
	201300030	10 E 400 249 253300	DIVERSIFIED BENEFIT SERVICES I	HRA PAYMENTS	-99.41	July		
	201300030	10 E 400 249 254300	DIVERSIFIED BENEFIT SERVICES I	HRA PAYMENTS	-52.29	July		
	201300030	10 E 400 249 132700	DIVERSIFIED BENEFIT SERVICES I	HRA PAYMENTS	-94.60	July		
	201300030	10 E 400 249 136320	DIVERSIFIED BENEFIT SERVICES I	HRA PAYMENTS	-50.31	July		
	201300030	10 E 700 249 172000	DIVERSIFIED BENEFIT SERVICES I	HRA PAYMENTS	-73.95	July		
	201300030	10 E 800 249 211100	DIVERSIFIED BENEFIT SERVICES I	HRA PAYMENTS	-32.14	July		
	201300030	10 E 800 249 214400	DIVERSIFIED BENEFIT SERVICES I	HRA PAYMENTS	-38.35	July		
	201300030	10 E 800 249 221910	DIVERSIFIED BENEFIT SERVICES I	HRA PAYMENTS	-100.78	July		
	201300030	10 E 800 249 223100	DIVERSIFIED BENEFIT SERVICES I	HRA PAYMENTS	-30.82	July		
	201300030	10 E 800 249 232100	DIVERSIFIED BENEFIT SERVICES I	HRA PAYMENTS	-108.96	July		
	201300030	10 E 800 249 252000	DIVERSIFIED BENEFIT SERVICES I	HRA PAYMENTS	-86.74	July		
	201300030	10 E 800 249 254200	DIVERSIFIED BENEFIT SERVICES I	HRA PAYMENTS	-52.28	July		
	201300030	10 E 800 249 254300	DIVERSIFIED BENEFIT SERVICES I	HRA PAYMENTS	-54.12	July		
	201300030	10 E 800 249 239000	DIVERSIFIED BENEFIT SERVICES I	HRA PAYMENTS	-1.64	July		
	201300030	27 E 700 249 152000	DIVERSIFIED BENEFIT SERVICES I	HRA PAYMENTS	-73.95	July		
	201300030	27 E 700 249 158100	DIVERSIFIED BENEFIT SERVICES I	HRA PAYMENTS	-16.81	July		
	201300030	27 E 700 249 158320	DIVERSIFIED BENEFIT SERVICES I	HRA PAYMENTS	-57.85	July		
	201300030	27 E 700 249 158330	DIVERSIFIED BENEFIT SERVICES I	HRA PAYMENTS	-14.70	July		
	201300030	27 E 700 249 158340	DIVERSIFIED BENEFIT SERVICES I	HRA PAYMENTS	-11.33	July		
	201300030	27 E 700 249 158510	DIVERSIFIED BENEFIT SERVICES I	HRA PAYMENTS	-4.61	July		
	201300030	27 E 700 249 158520	DIVERSIFIED BENEFIT SERVICES I	HRA PAYMENTS	-57.85	July		
	201300030	27 E 700 249 158530	DIVERSIFIED BENEFIT SERVICES I	HRA PAYMENTS	-57.94	July		
	201300030	27 E 700 249 158710	DIVERSIFIED BENEFIT SERVICES I	HRA PAYMENTS	-74.25	July		
	201300030	27 E 700 249 158730	DIVERSIFIED BENEFIT SERVICES I	HRA PAYMENTS	-57.90	July		
	201300030	27 E 700 249 158750	DIVERSIFIED BENEFIT SERVICES I	HRA PAYMENTS	-57.94	July		
	201300030	27 E 700 249 158760	DIVERSIFIED BENEFIT SERVICES I	HRA PAYMENTS	-57.96	July		
	201300030	27 E 700 249 159110	DIVERSIFIED BENEFIT SERVICES I	HRA PAYMENTS	-682.14	July		
	201300030	27 E 700 249 213000	DIVERSIFIED BENEFIT SERVICES I	HRA PAYMENTS	-21.51	July		
	201300030	27 E 700 249 214400	DIVERSIFIED BENEFIT SERVICES I	HRA PAYMENTS	-15.67	July		
	201300030	27 E 700 249 223300	DIVERSIFIED BENEFIT SERVICES I	HRA PAYMENTS	-27.32	July		
	201300030	27 E 700 249 223300	DIVERSIFIED BENEFIT SERVICES I	HRA PAYMENTS	-40.36	July		
	201300030	10 E 100 249 110300	DIVERSIFIED BENEFIT SERVICES I	HRA PAYMENTS	-57.78	July		
	201300030	10 E 150 249 110450	DIVERSIFIED BENEFIT SERVICES I	HRA PAYMENTS	-295.24	July		
	201300030	27 E 700 249 158310	DIVERSIFIED BENEFIT SERVICES I	HRA PAYMENTS	-58.01	July		
	201300030	10 E 100 249 122000	DIVERSIFIED BENEFIT SERVICES I	HRA PAYMENTS	-71.30	July		
			Totals for 201300030			0.00		
07/22/2013	201300039	10 L 000 000 811614	DIVERSIFIED BENEFIT SERVICES I	Flex plan charges	5.00	July		
			Totals for 201300039			5.00		
07/23/2013	201300040	27 E 700 249 223300	DIVERSIFIED BENEFIT SERVICES I	HRA PAYMENTS	20.08	July		
	201300040	27 E 700 249 223300	DIVERSIFIED BENEFIT SERVICES I	HRA PAYMENTS	29.66	July		
	201300040	10 E 100 249 110300	DIVERSIFIED BENEFIT SERVICES I	HRA PAYMENTS	42.46	July		
	201300040	10 E 150 249 110450	DIVERSIFIED BENEFIT SERVICES I	HRA PAYMENTS	216.98	July		
	201300040	27 E 700 249 158310	DIVERSIFIED BENEFIT SERVICES I	HRA PAYMENTS	42.63	July		
	201300040	10 E 200 249 122000	DIVERSIFIED BENEFIT SERVICES I	HRA PAYMENTS	26.14	July		
	201300040	10 E 100 249 122000	DIVERSIFIED BENEFIT SERVICES I	HRA PAYMENTS	26.29	July		
	201300040	10 E 100 249 110000	DIVERSIFIED BENEFIT SERVICES I	HRA PAYMENTS	114.52	July		
	201300040	10 E 100 249 110100	DIVERSIFIED BENEFIT SERVICES I	HRA PAYMENTS	170.35	July		

CHECK	CHECK ACCOUNT				INVOICE		POST
DATE	NUMBER	NUMBER	VENDOR		DESCRIPTION	AMOUNT	MONTH
07/23/2013	201300040	10 E 100 249 110101	DIVERSIFIED BENEFIT SERVICES	I HRA PAYMENTS		249.07	July
	201300040	10 E 100 249 110200	DIVERSIFIED BENEFIT SERVICES	I HRA PAYMENTS		151.37	July
	201300040	10 E 100 249 110300	DIVERSIFIED BENEFIT SERVICES	I HRA PAYMENTS		178.36	July
	201300040	10 E 100 249 143000	DIVERSIFIED BENEFIT SERVICES	I HRA PAYMENTS		32.36	July
	201300040	10 E 100 249 213000	DIVERSIFIED BENEFIT SERVICES	I HRA PAYMENTS		48.45	July
	201300040	10 E 100 249 222200	DIVERSIFIED BENEFIT SERVICES	I HRA PAYMENTS		37.00	July
	201300040	10 E 100 249 241000	DIVERSIFIED BENEFIT SERVICES	I HRA PAYMENTS		176.52	July
	201300040	10 E 100 249 253300	DIVERSIFIED BENEFIT SERVICES	I HRA PAYMENTS		58.37	July
	201300040	10 E 100 249 110100	DIVERSIFIED BENEFIT SERVICES	I HRA PAYMENTS		50.54	July
	201300040	10 E 100 249 110101	DIVERSIFIED BENEFIT SERVICES	I HRA PAYMENTS		53.20	July
	201300040	10 E 100 249 110200	DIVERSIFIED BENEFIT SERVICES	I HRA PAYMENTS		84.98	July
	201300040	10 E 100 249 110300	DIVERSIFIED BENEFIT SERVICES	I HRA PAYMENTS		42.49	July
	201300040	10 E 200 249 120000	DIVERSIFIED BENEFIT SERVICES	I HRA PAYMENTS		20.08	July
	201300040	10 E 200 249 120600	DIVERSIFIED BENEFIT SERVICES	I HRA PAYMENTS		97.08	July
	201300040	10 E 200 249 121000	DIVERSIFIED BENEFIT SERVICES	I HRA PAYMENTS		6.18	July
	201300040	10 E 200 249 122000	DIVERSIFIED BENEFIT SERVICES	I HRA PAYMENTS		121.15	July
	201300040	10 E 200 249 123000	DIVERSIFIED BENEFIT SERVICES	I HRA PAYMENTS		11.08	July
	201300040	10 E 200 249 124000	DIVERSIFIED BENEFIT SERVICES	I HRA PAYMENTS		47.78	July
	201300040	10 E 200 249 125400	DIVERSIFIED BENEFIT SERVICES	I HRA PAYMENTS		2.38	July
	201300040	10 E 200 249 125500	DIVERSIFIED BENEFIT SERVICES	I HRA PAYMENTS		21.27	July
	201300040	10 E 200 249 125510	DIVERSIFIED BENEFIT SERVICES	I HRA PAYMENTS		42.69	July
	201300040	10 E 200 249 126000	DIVERSIFIED BENEFIT SERVICES	I HRA PAYMENTS		55.56	July
	201300040	10 E 200 249 127000	DIVERSIFIED BENEFIT SERVICES	I HRA PAYMENTS		76.68	July
	201300040	10 E 200 249 132700	DIVERSIFIED BENEFIT SERVICES	I HRA PAYMENTS		24.06	July
	201300040	10 E 200 249 136320	DIVERSIFIED BENEFIT SERVICES	I HRA PAYMENTS		5.52	July
	201300040	10 E 200 249 141000	DIVERSIFIED BENEFIT SERVICES	I HRA PAYMENTS		5.31	July
	201300040	10 E 200 249 143000	DIVERSIFIED BENEFIT SERVICES	I HRA PAYMENTS		43.98	July
	201300040	10 E 200 249 213000	DIVERSIFIED BENEFIT SERVICES	I HRA PAYMENTS		85.13	July
	201300040	10 E 200 249 222200	DIVERSIFIED BENEFIT SERVICES	I HRA PAYMENTS		71.04	July
	201300040	10 E 200 249 241000	DIVERSIFIED BENEFIT SERVICES	I HRA PAYMENTS		110.82	July
	201300040	10 E 200 249 241100	DIVERSIFIED BENEFIT SERVICES	I HRA PAYMENTS		0.90	July
	201300040	10 E 200 249 253300	DIVERSIFIED BENEFIT SERVICES	I HRA PAYMENTS		78.91	July
	201300040	10 E 200 249 254300	DIVERSIFIED BENEFIT SERVICES	I HRA PAYMENTS		38.43	July
	201300040	10 E 400 249 121000	DIVERSIFIED BENEFIT SERVICES	I HRA PAYMENTS		31.46	July
	201300040	10 E 400 249 122000	DIVERSIFIED BENEFIT SERVICES	I HRA PAYMENTS		170.26	July
	201300040	10 E 400 249 123000	DIVERSIFIED BENEFIT SERVICES	I HRA PAYMENTS		74.14	July
	201300040	10 E 400 249 124000	DIVERSIFIED BENEFIT SERVICES	I HRA PAYMENTS		98.60	July
	201300040	10 E 400 249 125400	DIVERSIFIED BENEFIT SERVICES	I HRA PAYMENTS		2.38	July
	201300040	10 E 400 249 125500	DIVERSIFIED BENEFIT SERVICES	I HRA PAYMENTS		21.27	July
	201300040	10 E 400 249 126000	DIVERSIFIED BENEFIT SERVICES	I HRA PAYMENTS		142.45	July
	201300040	10 E 400 249 127000	DIVERSIFIED BENEFIT SERVICES	I HRA PAYMENTS		138.08	July
	201300040	10 E 400 249 141000	DIVERSIFIED BENEFIT SERVICES	I HRA PAYMENTS		8.07	July
	201300040	10 E 400 249 143000	DIVERSIFIED BENEFIT SERVICES	I HRA PAYMENTS		44.41	July
	201300040	10 E 400 249 213000	DIVERSIFIED BENEFIT SERVICES	I HRA PAYMENTS		59.87	July
	201300040	10 E 400 249 222200	DIVERSIFIED BENEFIT SERVICES	I HRA PAYMENTS		70.94	July
	201300040	10 E 400 249 241000	DIVERSIFIED BENEFIT SERVICES	I HRA PAYMENTS		104.21	July
	201300040	10 E 400 249 241100	DIVERSIFIED BENEFIT SERVICES	I HRA PAYMENTS		2.86	July
	201300040	10 E 400 249 253300	DIVERSIFIED BENEFIT SERVICES	I HRA PAYMENTS		73.06	July
	201300040	10 E 400 249 254300	DIVERSIFIED BENEFIT SERVICES	I HRA PAYMENTS		38.43	July
	201300040	10 E 400 249 132700	DIVERSIFIED BENEFIT SERVICES	I HRA PAYMENTS		69.52	July
	201300040	10 E 400 249 136320	DIVERSIFIED BENEFIT SERVICES	I HRA PAYMENTS		36.97	July
	201300040	10 E 700 249 172000	DIVERSIFIED BENEFIT SERVICES	I HRA PAYMENTS		54.35	July
	201300040	10 E 800 249 211100	DIVERSIFIED BENEFIT SERVICES	I HRA PAYMENTS		23.62	July
	201300040	10 E 800 249 214400	DIVERSIFIED BENEFIT SERVICES	I HRA PAYMENTS		28.19	July
	201300040	10 E 800 249 221910	DIVERSIFIED BENEFIT SERVICES	I HRA PAYMENTS		74.07	July
	201300040	10 E 800 249 223100	DIVERSIFIED BENEFIT SERVICES	I HRA PAYMENTS		22.65	July

CHECK	CHECK ACCOUNT			INVOICE			POST
DATE	NUMBER	NUMBER	VENDOR	DESCRIPTION	AMOUNT	MONTH	
07/23/2013	201300040	10 E 800 249 232100	DIVERSIFIED BENEFIT SERVICES I	HRA PAYMENTS	80.08	July	
	201300040	10 E 800 249 252000	DIVERSIFIED BENEFIT SERVICES I	HRA PAYMENTS	63.75	July	
	201300040	10 E 800 249 254200	DIVERSIFIED BENEFIT SERVICES I	HRA PAYMENTS	38.43	July	
	201300040	10 E 800 249 254300	DIVERSIFIED BENEFIT SERVICES I	HRA PAYMENTS	39.77	July	
	201300040	10 E 800 249 239000	DIVERSIFIED BENEFIT SERVICES I	HRA PAYMENTS	1.21	July	
	201300040	27 E 700 249 152000	DIVERSIFIED BENEFIT SERVICES I	HRA PAYMENTS	54.35	July	
	201300040	27 E 700 249 158100	DIVERSIFIED BENEFIT SERVICES I	HRA PAYMENTS	12.35	July	
	201300040	27 E 700 249 158320	DIVERSIFIED BENEFIT SERVICES I	HRA PAYMENTS	42.51	July	
	201300040	27 E 700 249 158330	DIVERSIFIED BENEFIT SERVICES I	HRA PAYMENTS	10.80	July	
	201300040	27 E 700 249 158340	DIVERSIFIED BENEFIT SERVICES I	HRA PAYMENTS	8.32	July	
	201300040	27 E 700 249 158510	DIVERSIFIED BENEFIT SERVICES I	HRA PAYMENTS	3.39	July	
	201300040	27 E 700 249 158520	DIVERSIFIED BENEFIT SERVICES I	HRA PAYMENTS	42.52	July	
	201300040	27 E 700 249 158530	DIVERSIFIED BENEFIT SERVICES I	HRA PAYMENTS	42.59	July	
	201300040	27 E 700 249 158710	DIVERSIFIED BENEFIT SERVICES I	HRA PAYMENTS	54.57	July	
	201300040	27 E 700 249 158730	DIVERSIFIED BENEFIT SERVICES I	HRA PAYMENTS	42.55	July	
	201300040	27 E 700 249 158750	DIVERSIFIED BENEFIT SERVICES I	HRA PAYMENTS	42.58	July	
	201300040	27 E 700 249 158760	DIVERSIFIED BENEFIT SERVICES I	HRA PAYMENTS	42.60	July	
	201300040	27 E 700 249 159110	DIVERSIFIED BENEFIT SERVICES I	HRA PAYMENTS	501.34	July	
	201300040	27 E 700 249 213000	DIVERSIFIED BENEFIT SERVICES I	HRA PAYMENTS	15.81	July	
	201300040	27 E 700 249 214400	DIVERSIFIED BENEFIT SERVICES I	HRA PAYMENTS	11.51	July	
				Totals for 201300040	5,358.74		
07/29/2013	201300041	10 L 000 000 811614	DIVERSIFIED BENEFIT SERVICES I	Flex plan charges	121.40	July	
				Totals for 201300041	121.40		
07/29/2013	201300042	10 E 100 249 110000	DIVERSIFIED BENEFIT SERVICES I	HRA PAYMENTS	153.43	July	
	201300042	10 E 100 249 110100	DIVERSIFIED BENEFIT SERVICES I	HRA PAYMENTS	228.23	July	
	201300042	10 E 100 249 110101	DIVERSIFIED BENEFIT SERVICES I	HRA PAYMENTS	333.69	July	
	201300042	10 E 100 249 110200	DIVERSIFIED BENEFIT SERVICES I	HRA PAYMENTS	202.80	July	
	201300042	10 E 100 249 110300	DIVERSIFIED BENEFIT SERVICES I	HRA PAYMENTS	238.95	July	
	201300042	10 E 100 249 143000	DIVERSIFIED BENEFIT SERVICES I	HRA PAYMENTS	43.35	July	
	201300042	10 E 100 249 213000	DIVERSIFIED BENEFIT SERVICES I	HRA PAYMENTS	64.91	July	
	201300042	10 E 100 249 222200	DIVERSIFIED BENEFIT SERVICES I	HRA PAYMENTS	49.57	July	
	201300042	10 E 100 249 241000	DIVERSIFIED BENEFIT SERVICES I	HRA PAYMENTS	236.50	July	
	201300042	10 E 100 249 253300	DIVERSIFIED BENEFIT SERVICES I	HRA PAYMENTS	78.21	July	
	201300042	10 E 100 249 110100	DIVERSIFIED BENEFIT SERVICES I	HRA PAYMENTS	67.72	July	
	201300042	10 E 100 249 110101	DIVERSIFIED BENEFIT SERVICES I	HRA PAYMENTS	71.28	July	
	201300042	10 E 100 249 110200	DIVERSIFIED BENEFIT SERVICES I	HRA PAYMENTS	113.86	July	
	201300042	10 E 100 249 110300	DIVERSIFIED BENEFIT SERVICES I	HRA PAYMENTS	56.93	July	
	201300042	10 E 200 249 120000	DIVERSIFIED BENEFIT SERVICES I	HRA PAYMENTS	26.91	July	
	201300042	10 E 200 249 120600	DIVERSIFIED BENEFIT SERVICES I	HRA PAYMENTS	130.06	July	
	201300042	10 E 200 249 121000	DIVERSIFIED BENEFIT SERVICES I	HRA PAYMENTS	8.29	July	
	201300042	10 E 200 249 122000	DIVERSIFIED BENEFIT SERVICES I	HRA PAYMENTS	162.32	July	
	201300042	10 E 200 249 123000	DIVERSIFIED BENEFIT SERVICES I	HRA PAYMENTS	14.84	July	
	201300042	10 E 200 249 124000	DIVERSIFIED BENEFIT SERVICES I	HRA PAYMENTS	64.01	July	
	201300042	10 E 200 249 125400	DIVERSIFIED BENEFIT SERVICES I	HRA PAYMENTS	3.20	July	
	201300042	10 E 200 249 125500	DIVERSIFIED BENEFIT SERVICES I	HRA PAYMENTS	28.50	July	
	201300042	10 E 200 249 125510	DIVERSIFIED BENEFIT SERVICES I	HRA PAYMENTS	57.20	July	
	201300042	10 E 200 249 126000	DIVERSIFIED BENEFIT SERVICES I	HRA PAYMENTS	74.43	July	
	201300042	10 E 200 249 127000	DIVERSIFIED BENEFIT SERVICES I	HRA PAYMENTS	102.73	July	
	201300042	10 E 200 249 132700	DIVERSIFIED BENEFIT SERVICES I	HRA PAYMENTS	32.23	July	
	201300042	10 E 200 249 136320	DIVERSIFIED BENEFIT SERVICES I	HRA PAYMENTS	7.40	July	
	201300042	10 E 200 249 141000	DIVERSIFIED BENEFIT SERVICES I	HRA PAYMENTS	7.11	July	
	201300042	10 E 200 249 143000	DIVERSIFIED BENEFIT SERVICES I	HRA PAYMENTS	58.92	July	
	201300042	10 E 200 249 213000	DIVERSIFIED BENEFIT SERVICES I	HRA PAYMENTS	114.05	July	
	201300042	10 E 200 249 222200	DIVERSIFIED BENEFIT SERVICES I	HRA PAYMENTS	95.17	July	

CHECK	CHECK ACCOUNT			INVOICE			POST
DATE	NUMBER	NUMBER	VENDOR	DESCRIPTION	AMOUNT	MONTH	
07/29/2013	201300042	10 E 200 249 241000	DIVERSIFIED BENEFIT SERVICES I	HRA PAYMENTS	148.47	July	
	201300042	10 E 200 249 241100	DIVERSIFIED BENEFIT SERVICES I	HRA PAYMENTS	1.21	July	
	201300042	10 E 200 249 253300	DIVERSIFIED BENEFIT SERVICES I	HRA PAYMENTS	105.72	July	
	201300042	10 E 200 249 254300	DIVERSIFIED BENEFIT SERVICES I	HRA PAYMENTS	51.49	July	
	201300042	10 E 400 249 121000	DIVERSIFIED BENEFIT SERVICES I	HRA PAYMENTS	42.15	July	
	201300042	10 E 400 249 122000	DIVERSIFIED BENEFIT SERVICES I	HRA PAYMENTS	228.10	July	
	201300042	10 E 400 249 123000	DIVERSIFIED BENEFIT SERVICES I	HRA PAYMENTS	99.34	July	
	201300042	10 E 400 249 124000	DIVERSIFIED BENEFIT SERVICES I	HRA PAYMENTS	132.10	July	
	201300042	10 E 400 249 125400	DIVERSIFIED BENEFIT SERVICES I	HRA PAYMENTS	3.20	July	
	201300042	10 E 400 249 125500	DIVERSIFIED BENEFIT SERVICES I	HRA PAYMENTS	28.50	July	
	201300042	10 E 400 249 126000	DIVERSIFIED BENEFIT SERVICES I	HRA PAYMENTS	190.85	July	
	201300042	10 E 400 249 127000	DIVERSIFIED BENEFIT SERVICES I	HRA PAYMENTS	185.00	July	
	201300042	10 E 400 249 141000	DIVERSIFIED BENEFIT SERVICES I	HRA PAYMENTS	10.81	July	
	201300042	10 E 400 249 143000	DIVERSIFIED BENEFIT SERVICES I	HRA PAYMENTS	59.49	July	
	201300042	10 E 400 249 213000	DIVERSIFIED BENEFIT SERVICES I	HRA PAYMENTS	80.22	July	
	201300042	10 E 400 249 222200	DIVERSIFIED BENEFIT SERVICES I	HRA PAYMENTS	95.04	July	
	201300042	10 E 400 249 241000	DIVERSIFIED BENEFIT SERVICES I	HRA PAYMENTS	139.61	July	
	201300042	10 E 400 249 241100	DIVERSIFIED BENEFIT SERVICES I	HRA PAYMENTS	3.83	July	
	201300042	10 E 400 249 253300	DIVERSIFIED BENEFIT SERVICES I	HRA PAYMENTS	97.88	July	
	201300042	10 E 400 249 254300	DIVERSIFIED BENEFIT SERVICES I	HRA PAYMENTS	51.49	July	
	201300042	10 E 400 249 132700	DIVERSIFIED BENEFIT SERVICES I	HRA PAYMENTS	93.14	July	
	201300042	10 E 400 249 136320	DIVERSIFIED BENEFIT SERVICES I	HRA PAYMENTS	49.53	July	
	201300042	10 E 700 249 172000	DIVERSIFIED BENEFIT SERVICES I	HRA PAYMENTS	72.81	July	
	201300042	10 E 800 249 211100	DIVERSIFIED BENEFIT SERVICES I	HRA PAYMENTS	31.65	July	
	201300042	10 E 800 249 214400	DIVERSIFIED BENEFIT SERVICES I	HRA PAYMENTS	37.77	July	
	201300042	10 E 800 249 221910	DIVERSIFIED BENEFIT SERVICES I	HRA PAYMENTS	99.23	July	
	201300042	10 E 800 249 223100	DIVERSIFIED BENEFIT SERVICES I	HRA PAYMENTS	30.34	July	
	201300042	10 E 800 249 232100	DIVERSIFIED BENEFIT SERVICES I	HRA PAYMENTS	107.29	July	
	201300042	10 E 800 249 252000	DIVERSIFIED BENEFIT SERVICES I	HRA PAYMENTS	85.41	July	
	201300042	10 E 800 249 254200	DIVERSIFIED BENEFIT SERVICES I	HRA PAYMENTS	51.48	July	
	201300042	10 E 800 249 254300	DIVERSIFIED BENEFIT SERVICES I	HRA PAYMENTS	53.29	July	
	201300042	10 E 800 249 239000	DIVERSIFIED BENEFIT SERVICES I	HRA PAYMENTS	1.61	July	
	201300042	27 E 700 249 152000	DIVERSIFIED BENEFIT SERVICES I	HRA PAYMENTS	72.81	July	
	201300042	27 E 700 249 158100	DIVERSIFIED BENEFIT SERVICES I	HRA PAYMENTS	16.55	July	
	201300042	27 E 700 249 158320	DIVERSIFIED BENEFIT SERVICES I	HRA PAYMENTS	56.96	July	
	201300042	27 E 700 249 158330	DIVERSIFIED BENEFIT SERVICES I	HRA PAYMENTS	14.47	July	
	201300042	27 E 700 249 158340	DIVERSIFIED BENEFIT SERVICES I	HRA PAYMENTS	11.15	July	
	201300042	27 E 700 249 158510	DIVERSIFIED BENEFIT SERVICES I	HRA PAYMENTS	4.54	July	
	201300042	27 E 700 249 158520	DIVERSIFIED BENEFIT SERVICES I	HRA PAYMENTS	56.97	July	
	201300042	27 E 700 249 158530	DIVERSIFIED BENEFIT SERVICES I	HRA PAYMENTS	57.06	July	
	201300042	27 E 700 249 158710	DIVERSIFIED BENEFIT SERVICES I	HRA PAYMENTS	73.11	July	
	201300042	27 E 700 249 158730	DIVERSIFIED BENEFIT SERVICES I	HRA PAYMENTS	57.01	July	
	201300042	27 E 700 249 158750	DIVERSIFIED BENEFIT SERVICES I	HRA PAYMENTS	57.05	July	
	201300042	27 E 700 249 158760	DIVERSIFIED BENEFIT SERVICES I	HRA PAYMENTS	57.07	July	
	201300042	27 E 700 249 159110	DIVERSIFIED BENEFIT SERVICES I	HRA PAYMENTS	671.67	July	
	201300042	27 E 700 249 213000	DIVERSIFIED BENEFIT SERVICES I	HRA PAYMENTS	21.18	July	
	201300042	27 E 700 249 214400	DIVERSIFIED BENEFIT SERVICES I	HRA PAYMENTS	15.43	July	
	201300042	27 E 700 249 223300	DIVERSIFIED BENEFIT SERVICES I	HRA PAYMENTS	26.90	July	
	201300042	27 E 700 249 223300	DIVERSIFIED BENEFIT SERVICES I	HRA PAYMENTS	39.74	July	
	201300042	10 E 100 249 110300	DIVERSIFIED BENEFIT SERVICES I	HRA PAYMENTS	56.89	July	
	201300042	10 E 150 249 110450	DIVERSIFIED BENEFIT SERVICES I	HRA PAYMENTS	290.71	July	
	201300042	27 E 700 249 158310	DIVERSIFIED BENEFIT SERVICES I	HRA PAYMENTS	57.12	July	
	201300042	10 E 200 249 122000	DIVERSIFIED BENEFIT SERVICES I	HRA PAYMENTS	35.02	July	
	201300042	10 E 100 249 122000	DIVERSIFIED BENEFIT SERVICES I	HRA PAYMENTS	35.20	July	
Totals for 201300042					7,179.46		

CHECK	CHECK ACCOUNT					INVOICE		POST
DATE	NUMBER	NUMBER	VENDOR			DESCRIPTION	AMOUNT	MONTH
07/16/2013	201300044	10 E 100 249 110000	DIVERSIFIED BENEFIT SERVICES I	HRA PAYMENTS		155.62	July	
	201300044	10 E 100 249 110100	DIVERSIFIED BENEFIT SERVICES I	HRA PAYMENTS		231.46	July	
	201300044	10 E 100 249 110101	DIVERSIFIED BENEFIT SERVICES I	HRA PAYMENTS		338.44	July	
	201300044	10 E 100 249 110200	DIVERSIFIED BENEFIT SERVICES I	HRA PAYMENTS		205.68	July	
	201300044	10 E 100 249 110300	DIVERSIFIED BENEFIT SERVICES I	HRA PAYMENTS		242.35	July	
	201300044	10 E 100 249 143000	DIVERSIFIED BENEFIT SERVICES I	HRA PAYMENTS		43.97	July	
	201300044	10 E 100 249 213000	DIVERSIFIED BENEFIT SERVICES I	HRA PAYMENTS		65.84	July	
	201300044	10 E 100 249 222200	DIVERSIFIED BENEFIT SERVICES I	HRA PAYMENTS		50.27	July	
	201300044	10 E 100 249 241000	DIVERSIFIED BENEFIT SERVICES I	HRA PAYMENTS		239.85	July	
	201300044	10 E 100 249 253300	DIVERSIFIED BENEFIT SERVICES I	HRA PAYMENTS		79.32	July	
	201300044	10 E 100 249 110100	DIVERSIFIED BENEFIT SERVICES I	HRA PAYMENTS		68.68	July	
	201300044	10 E 100 249 110101	DIVERSIFIED BENEFIT SERVICES I	HRA PAYMENTS		72.29	July	
	201300044	10 E 100 249 110200	DIVERSIFIED BENEFIT SERVICES I	HRA PAYMENTS		115.47	July	
	201300044	10 E 100 249 110300	DIVERSIFIED BENEFIT SERVICES I	HRA PAYMENTS		57.73	July	
	201300044	10 E 200 249 120000	DIVERSIFIED BENEFIT SERVICES I	HRA PAYMENTS		27.29	July	
	201300044	10 E 200 249 120600	DIVERSIFIED BENEFIT SERVICES I	HRA PAYMENTS		131.91	July	
	201300044	10 E 200 249 121000	DIVERSIFIED BENEFIT SERVICES I	HRA PAYMENTS		8.40	July	
	201300044	10 E 200 249 122000	DIVERSIFIED BENEFIT SERVICES I	HRA PAYMENTS		164.62	July	
	201300044	10 E 200 249 123000	DIVERSIFIED BENEFIT SERVICES I	HRA PAYMENTS		15.05	July	
	201300044	10 E 200 249 124000	DIVERSIFIED BENEFIT SERVICES I	HRA PAYMENTS		64.92	July	
	201300044	10 E 200 249 125400	DIVERSIFIED BENEFIT SERVICES I	HRA PAYMENTS		3.24	July	
	201300044	10 E 200 249 125500	DIVERSIFIED BENEFIT SERVICES I	HRA PAYMENTS		28.90	July	
	201300044	10 E 200 249 125510	DIVERSIFIED BENEFIT SERVICES I	HRA PAYMENTS		58.01	July	
	201300044	10 E 200 249 126000	DIVERSIFIED BENEFIT SERVICES I	HRA PAYMENTS		75.50	July	
	201300044	10 E 200 249 127000	DIVERSIFIED BENEFIT SERVICES I	HRA PAYMENTS		104.19	July	
	201300044	10 E 200 249 132700	DIVERSIFIED BENEFIT SERVICES I	HRA PAYMENTS		32.69	July	
	201300044	10 E 200 249 136320	DIVERSIFIED BENEFIT SERVICES I	HRA PAYMENTS		7.51	July	
	201300044	10 E 200 249 141000	DIVERSIFIED BENEFIT SERVICES I	HRA PAYMENTS		7.22	July	
	201300044	10 E 200 249 143000	DIVERSIFIED BENEFIT SERVICES I	HRA PAYMENTS		59.76	July	
	201300044	10 E 200 249 213000	DIVERSIFIED BENEFIT SERVICES I	HRA PAYMENTS		115.67	July	
	201300044	10 E 200 249 222200	DIVERSIFIED BENEFIT SERVICES I	HRA PAYMENTS		96.53	July	
	201300044	10 E 200 249 241000	DIVERSIFIED BENEFIT SERVICES I	HRA PAYMENTS		150.57	July	
	201300044	10 E 200 249 241100	DIVERSIFIED BENEFIT SERVICES I	HRA PAYMENTS		1.23	July	
	201300044	10 E 200 249 253300	DIVERSIFIED BENEFIT SERVICES I	HRA PAYMENTS		107.22	July	
	201300044	10 E 200 249 254300	DIVERSIFIED BENEFIT SERVICES I	HRA PAYMENTS		52.22	July	
	201300044	10 E 400 249 121000	DIVERSIFIED BENEFIT SERVICES I	HRA PAYMENTS		42.75	July	
	201300044	10 E 400 249 122000	DIVERSIFIED BENEFIT SERVICES I	HRA PAYMENTS		231.34	July	
	201300044	10 E 400 249 123000	DIVERSIFIED BENEFIT SERVICES I	HRA PAYMENTS		100.74	July	
	201300044	10 E 400 249 124000	DIVERSIFIED BENEFIT SERVICES I	HRA PAYMENTS		133.98	July	
	201300044	10 E 400 249 125400	DIVERSIFIED BENEFIT SERVICES I	HRA PAYMENTS		3.24	July	
	201300044	10 E 400 249 125500	DIVERSIFIED BENEFIT SERVICES I	HRA PAYMENTS		28.90	July	
	201300044	10 E 400 249 126000	DIVERSIFIED BENEFIT SERVICES I	HRA PAYMENTS		193.56	July	
	201300044	10 E 400 249 127000	DIVERSIFIED BENEFIT SERVICES I	HRA PAYMENTS		187.62	July	
	201300044	10 E 400 249 141000	DIVERSIFIED BENEFIT SERVICES I	HRA PAYMENTS		10.96	July	
	201300044	10 E 400 249 143000	DIVERSIFIED BENEFIT SERVICES I	HRA PAYMENTS		60.34	July	
	201300044	10 E 400 249 213000	DIVERSIFIED BENEFIT SERVICES I	HRA PAYMENTS		81.36	July	
	201300044	10 E 400 249 222200	DIVERSIFIED BENEFIT SERVICES I	HRA PAYMENTS		96.40	July	
	201300044	10 E 400 249 241000	DIVERSIFIED BENEFIT SERVICES I	HRA PAYMENTS		141.60	July	
	201300044	10 E 400 249 241100	DIVERSIFIED BENEFIT SERVICES I	HRA PAYMENTS		3.88	July	
	201300044	10 E 400 249 253300	DIVERSIFIED BENEFIT SERVICES I	HRA PAYMENTS		99.27	July	
	201300044	10 E 400 249 254300	DIVERSIFIED BENEFIT SERVICES I	HRA PAYMENTS		52.22	July	
	201300044	10 E 400 249 132700	DIVERSIFIED BENEFIT SERVICES I	HRA PAYMENTS		94.47	July	
	201300044	10 E 400 249 136320	DIVERSIFIED BENEFIT SERVICES I	HRA PAYMENTS		50.24	July	
	201300044	10 E 700 249 172000	DIVERSIFIED BENEFIT SERVICES I	HRA PAYMENTS		73.85	July	
	201300044	10 E 800 249 211100	DIVERSIFIED BENEFIT SERVICES I	HRA PAYMENTS		32.10	July	
	201300044	10 E 800 249 214400	DIVERSIFIED BENEFIT SERVICES I	HRA PAYMENTS		38.30	July	

CHECK	CHECK ACCOUNT			INVOICE			POST
DATE	NUMBER	NUMBER	VENDOR	DESCRIPTION	AMOUNT	MONTH	
07/16/2013	201300044	10 E 800 249 221910	DIVERSIFIED BENEFIT SERVICES I	HRA PAYMENTS	100.64	July	
	201300044	10 E 800 249 223100	DIVERSIFIED BENEFIT SERVICES I	HRA PAYMENTS	30.78	July	
	201300044	10 E 800 249 232100	DIVERSIFIED BENEFIT SERVICES I	HRA PAYMENTS	108.81	July	
	201300044	10 E 800 249 252000	DIVERSIFIED BENEFIT SERVICES I	HRA PAYMENTS	86.62	July	
	201300044	10 E 800 249 254200	DIVERSIFIED BENEFIT SERVICES I	HRA PAYMENTS	52.21	July	
	201300044	10 E 800 249 254300	DIVERSIFIED BENEFIT SERVICES I	HRA PAYMENTS	54.05	July	
	201300044	10 E 800 249 239000	DIVERSIFIED BENEFIT SERVICES I	HRA PAYMENTS	1.64	July	
	201300044	27 E 700 249 152000	DIVERSIFIED BENEFIT SERVICES I	HRA PAYMENTS	73.85	July	
	201300044	27 E 700 249 158100	DIVERSIFIED BENEFIT SERVICES I	HRA PAYMENTS	16.79	July	
	201300044	27 E 700 249 158320	DIVERSIFIED BENEFIT SERVICES I	HRA PAYMENTS	57.77	July	
	201300044	27 E 700 249 158330	DIVERSIFIED BENEFIT SERVICES I	HRA PAYMENTS	14.68	July	
	201300044	27 E 700 249 158340	DIVERSIFIED BENEFIT SERVICES I	HRA PAYMENTS	11.31	July	
	201300044	27 E 700 249 158510	DIVERSIFIED BENEFIT SERVICES I	HRA PAYMENTS	4.60	July	
	201300044	27 E 700 249 158520	DIVERSIFIED BENEFIT SERVICES I	HRA PAYMENTS	57.77	July	
	201300044	27 E 700 249 158530	DIVERSIFIED BENEFIT SERVICES I	HRA PAYMENTS	57.86	July	
	201300044	27 E 700 249 158710	DIVERSIFIED BENEFIT SERVICES I	HRA PAYMENTS	74.15	July	
	201300044	27 E 700 249 158730	DIVERSIFIED BENEFIT SERVICES I	HRA PAYMENTS	57.82	July	
	201300044	27 E 700 249 158750	DIVERSIFIED BENEFIT SERVICES I	HRA PAYMENTS	57.86	July	
	201300044	27 E 700 249 158760	DIVERSIFIED BENEFIT SERVICES I	HRA PAYMENTS	57.88	July	
	201300044	27 E 700 249 159110	DIVERSIFIED BENEFIT SERVICES I	HRA PAYMENTS	681.20	July	
	201300044	27 E 700 249 213000	DIVERSIFIED BENEFIT SERVICES I	HRA PAYMENTS	21.48	July	
	201300044	27 E 700 249 214400	DIVERSIFIED BENEFIT SERVICES I	HRA PAYMENTS	15.65	July	
	201300044	27 E 700 249 223300	DIVERSIFIED BENEFIT SERVICES I	HRA PAYMENTS	27.28	July	
	201300044	27 E 700 249 223300	DIVERSIFIED BENEFIT SERVICES I	HRA PAYMENTS	40.30	July	
	201300044	10 E 100 249 110300	DIVERSIFIED BENEFIT SERVICES I	HRA PAYMENTS	57.70	July	
	201300044	10 E 150 249 110450	DIVERSIFIED BENEFIT SERVICES I	HRA PAYMENTS	294.84	July	
	201300044	27 E 700 249 158310	DIVERSIFIED BENEFIT SERVICES I	HRA PAYMENTS	57.93	July	
	201300044	10 E 100 249 122000	DIVERSIFIED BENEFIT SERVICES I	HRA PAYMENTS	71.18	July	
				Totals for 201300044	7,281.39		
07/30/2013	201300045	10 L 000 000 811614	DIVERSIFIED BENEFIT SERVICES I	Flex plan charges	321.09	July	
				Totals for 201300045	321.09		
				Totals for checks	262,604.31		

FUND SUMMARY

<u>FUND</u>	<u>DESCRIPTION</u>	<u>BALANCE SHEET</u>	<u>REVENUE</u>	<u>EXPENSE</u>	<u>TOTAL</u>
10	GENERAL	120,800.16	0.00	115,374.56	236,174.72
27	SPECIAL EDUCATION FUND	3,595.29	0.00	19,502.45	23,097.74
50	FOOD SERVICE	2,288.83	0.00	1,043.02	3,331.85
***	Fund Summary Totals ***	126,684.28	0.00	135,920.03	262,604.31

***** End of report *****

CHECK		CHECK ACCOUNT		INVOICE	
DATE	NUMBER	NUMBER	VENDOR	DESCRIPTION	AMOUNT
07/17/2013	7908	61 L 000 000 814404 000	ENDZONES VIDEO SYSTE	Video Camera Deposit	2,000.00
				Totals for 7908	2,000.00
				Totals for checks	2,000.00

FUND SUMMARY

<u>FUND</u>	<u>DESCRIPTION</u>	<u>BALANCE SHEET</u>	<u>REVENUE</u>	<u>EXPENSE</u>	<u>TOTAL</u>
61	EXTRA CURRICULAR FUND	2,000.00	0.00	0.00	2,000.00
***	Fund Summary Totals ***	2,000.00	0.00	0.00	2,000.00

***** End of report *****



School District of Altoona

1903 Bartlett Avenue Altoona, WI 54720
715-839-6032 715-839-6066 FAX

Dr. Connie Biedron, Superintendent

www.altoona.k12.wi.us

ALTOONA BOARD OF EDUCATION
Demographic Trends & Facility Planning Committee
District Board Room
July 16, 2013
7:30 a.m.

1. The meeting of the Demographic Trends & Facility Planning Committee was called to order by David Rowe at 7:36 a.m. in the District Board Room.
2. Roll Call was taken and the following were present:

David Rowe, Acting Chair	Matt Biren	Todd Trapani	Robin Elvig, Absent
Dr. Connie Biedron	Frank Borg	Bob Wilcox	Ann Kaiser, Absent
Joyce Orth	Kelley Gaynier	Jeannie York	
David Cihasky	Susan Sivertson	Jan Zander	
3. Report of Public Notice. All posting requirements were met.
4. Approval of Minutes. a. June 25, 2013 Meeting. The minutes were approved as presented.
5. Discuss any Follow-up from June 25 Meeting. The revised Room Analysis report for Pedersen Elementary was reviewed, along with long-term options.
6. Further Define/Narrow Options and Next Steps. Several new ideas were considered and defined. Three options were developed as follows. They will be refined to include costs for review at the July 30 meeting.
 - 1 Campus Option:
 - ✓ Stay on our current campus to include removal of section of middle school building to north and west of middle school/elementary corridor and building/remodeling/updating as needed to address space needs and safety issues
 - 2 Campus Option:
 - ✓ Keep instruction on our current campus to include removal of section of middle school building to north and west of middle school/elementary corridor and building/remodeling/updating as needed to address space needs and safety issues
 - ✓ Relocate athletic fields to district-owned land (KB) to provide an “athletic complex” and more (“community” focus)
 - 2 Campus Option:
 - ✓ Keep intermediate/middle/high schools on current campus to include removal of section of middle school building to north and west of middle school/elementary corridor and building/remodeling/updating as needed to address space needs and safety issues
 - ✓ Build new Pk-3 elementary/early childhood center on the district-owned land (KB)
7. Adjournment. The meeting adjourned at 9:40 a.m. The next meeting is scheduled for July 30, 7:30 a.m. The committee will visit the district-owned land (KB) on that date.

Joyce Orth CAP

The vision of the Altoona School District, in partnership with our students, their families, and our community, is to build a foundation for life-long learning and the emotional well-being of our students. We are dedicated to offering large school opportunities with a small school approach.



School District of Altoona

1903 Bartlett Avenue Altoona, WI 54720
715-839-6032 715-839-6066 FAX

Dr. Connie Biedron, Superintendent


www.altoona.k12.wi.us

ALTOONA BOARD OF EDUCATION
Demographic Trends & Facility Planning Committee
District Board Room
July 30, 2013
7:30 a.m.

Agenda

1. Call to Order
2. Roll Call
3. Report of Public Notice
4. Approval of Minutes.
 - a. July 16, 2013 Meeting
5. Discuss any Follow-up from July 16 Meeting
6. Review Draft Timeline and Other Pertinent Information from School Perceptions
7. Further Define/Narrow Options and Next Steps
8. Visit District-Owned Property on KB
9. Set Date(s) for Next Meeting(s)
10. Adjournment


The vision of the Altoona School District, in partnership with our students, their families, and our community, is to build a foundation for life-long learning and the emotional well-being of our students. We are dedicated to offering large school opportunities with a small school approach.



2013 FALL REGIONAL MEETINGS

FORWARD TOGETHER: PUBLIC SCHOOLS LEADING THE WAY

DATES: SEPT. & OCT. – VARIES PER LOCATION
LOCATIONS DETERMINED BY REGION



Region 4	October 16	29 Pines	Eau Claire
6 PM – Registration/Networking	6:30 PM – Dinner	7:30-9:00 PM – Program	

6 PM	Registration/Networking
6:30 PM	Dinner
7:30 – 9 PM	Program
	Regional Director’s Welcome
	Member Recognition Awards
	Elections (select Regions)
	Feature Presentation
	Legislative Update
	What do Employees Want?
	Use Wellness Programs to Increase Student Achievement
	Local School District Presentations (will vary by Region)
	Executive Director’s Report

Boards Goals:

- 1). Understand that conversations build relationships, relationships build trust, and trust builds student achievement. So create opportunities for more conversations.
- 2). Beginning in 2014-2015, every student will read at grade level by the end of 3rd grade.
- 3). Beginning in 2015-2016, at least 90% of students at each grade level will meet or exceed proficiency benchmarks in all subjects areas on the State assessments.
- 4). Beginning in 2016-2017, at least 80% of each class will have taken the ACT and achieved an average composite score of 25.

Draft
for Discussion

ALTOONA SCHOOL DISTRICT

Summary

The CESA 10 Energy Management Team has been working with the Altoona School District since February 2010. Our goal is to educate and actively assist school districts in making informed decisions to ensure comfort and efficient use of facility resources.

CESA 10 believes in using multiple approaches to reaching energy savings goals: technical and behavioral. We encourage facilities personnel to continue to work on both optimizing building systems and demonstrating behavioral changes in the district.

NOTE: Natural gas graphs - Heating Degree Days (HDD) were used to normalize therms for the year based on weather projections for your location. The months of June, July, and August were omitted to better reflect natural gas use for heating systems. More detailed natural gas use data is available upon request.

Cumulative Savings to Date:

\$255,728

2012-2013 Annual Savings:

\$16,806

2012-2013 Energy Use Reduction:

2%

Details

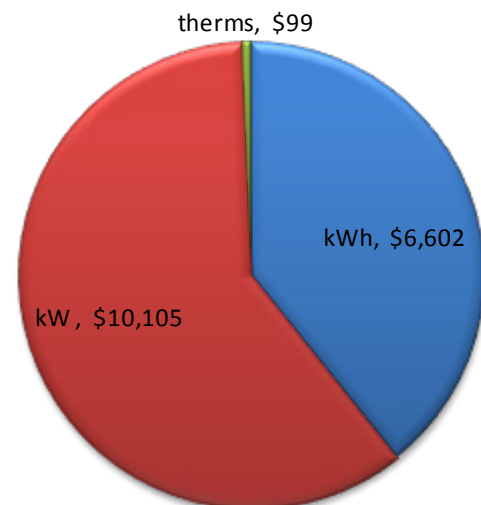
Energy Use Intensity (EUI)

One way to measure the impact of energy management is to compare the EUI of a building over time. EUI is measured in Btu/ft²/HDD for natural gas and kWh/ft² for electricity. The lower the EUI, the more energy efficient the building. Some buildings start out with a higher EUI than others. Middle and high schools typically have higher EUIs than elementary schools. Table 1 shows EUIs (gas and electricity) for the last two years.

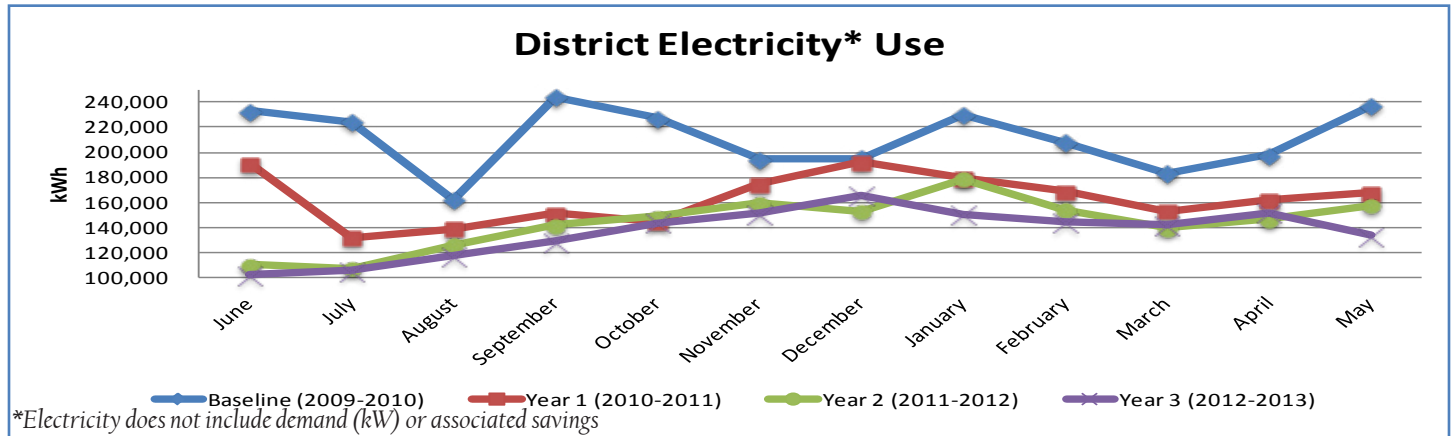
Table 1. Energy Use Intensity (EUI)

Building	Gas '11-'12	Gas '12-'13	Elec '11-'12	Elec '12-'13
HS	3.3	3.3	5.5	5.4
MS	2.5	2.4	6.6	6.3
Elementary	5.2	5.0	7.7	7.0

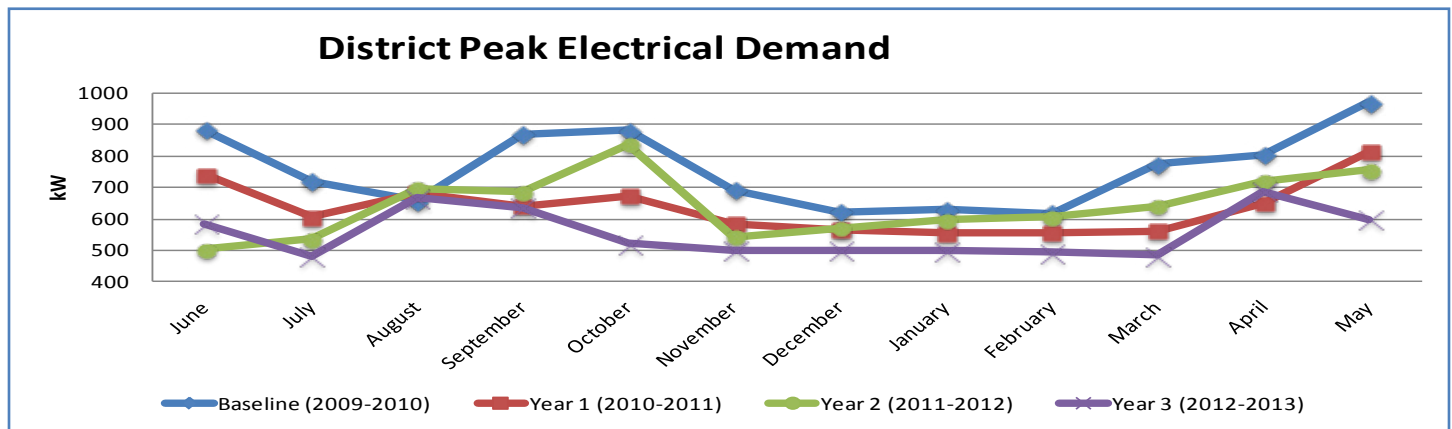
Energy Savings



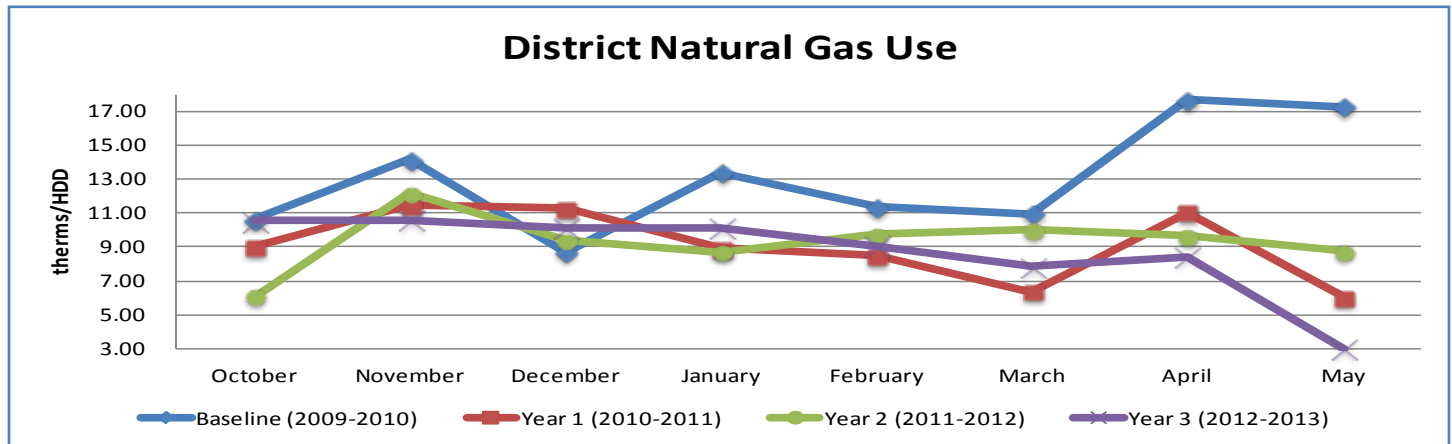
District - Energy Consumption



The general trend for district-wide electricity use is steadily decreasing.



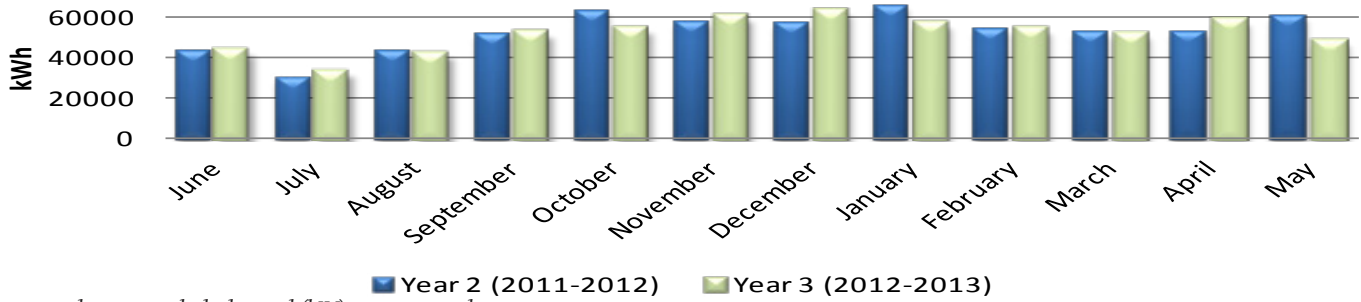
The peak electrical demand (kW) has been decreasing steadily. This was where the district realized the greatest savings over the last year.



The trend for district-wide natural gas use (therms/HDD) was variable. Some months were higher and other months were lower throughout the year.

High School - Energy Consumption

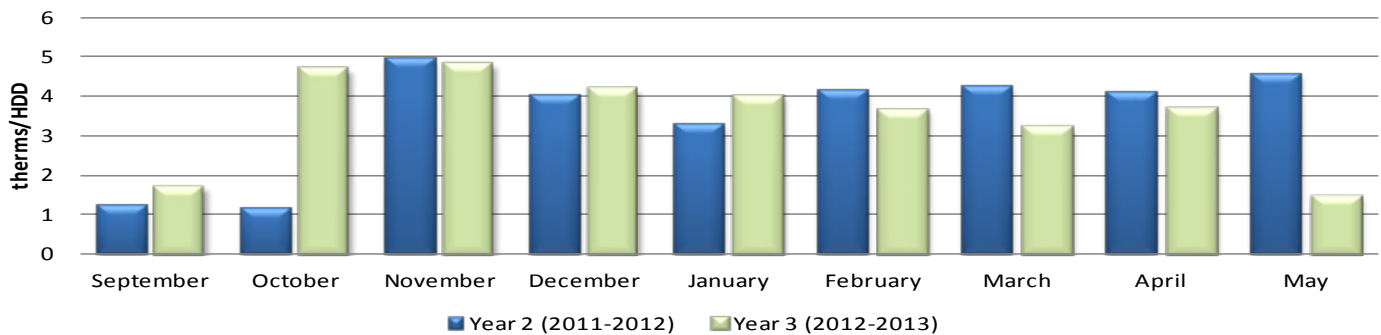
High School Electricity* Use



*Electricity does not include demand (kW) or associated savings

The high school reduced their electricity use by 2.8% or \$1,614 over the last year.

High School Natural Gas Use

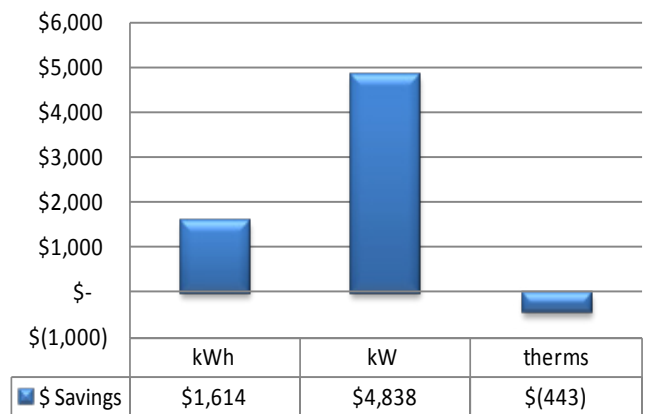


The high school *increased* their natural gas use by (4.2%) or (\$443) over the last year.



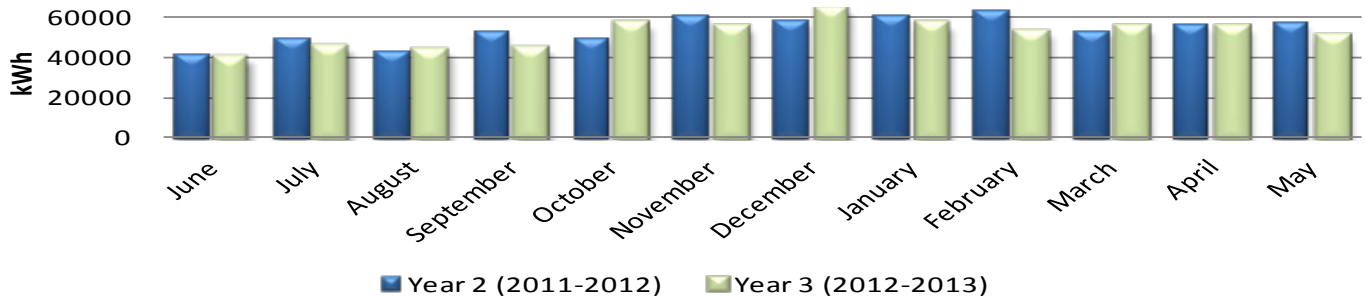
Staff have been encouraged to turn lights off when not in use or only use the lights they need.

Energy Savings = \$6,008



Middle School - Energy Consumption

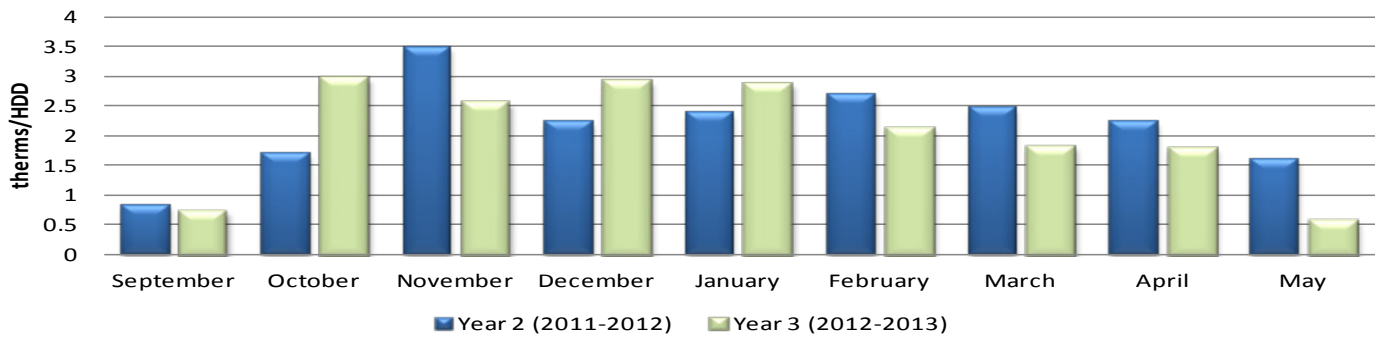
Middle School Electricity* Use



*Electricity does not include demand (kW) or associated savings

The middle school reduced their electricity use by 4.5% or \$2,327 over the last year.

Middle School Natural Gas Use

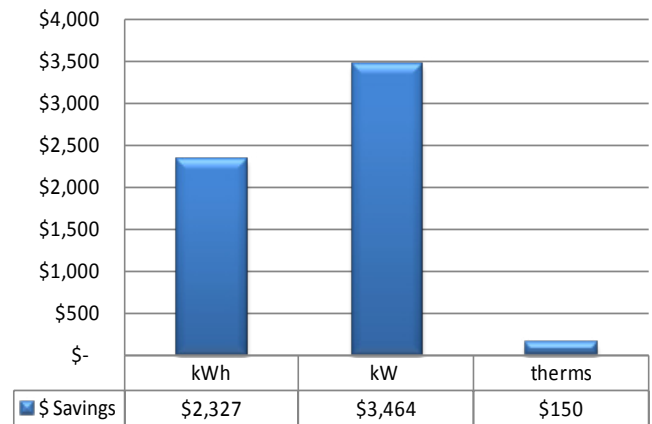


The middle school reduced their natural gas use by 1.4% or \$150 over the last year.



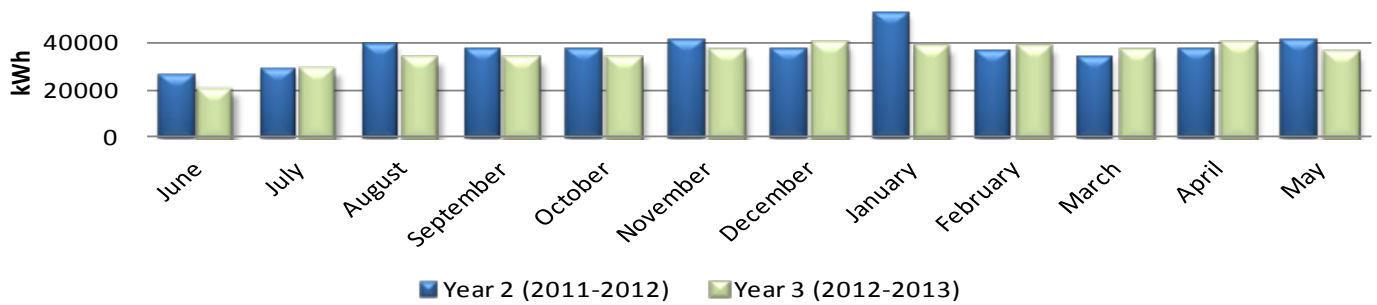
Plugging Smart Boards and other electronic devices into a power strip and toggling off each day is a great way to reduce phantom loads at night.

Energy Savings = \$5,942



Elementary School - Energy Consumption

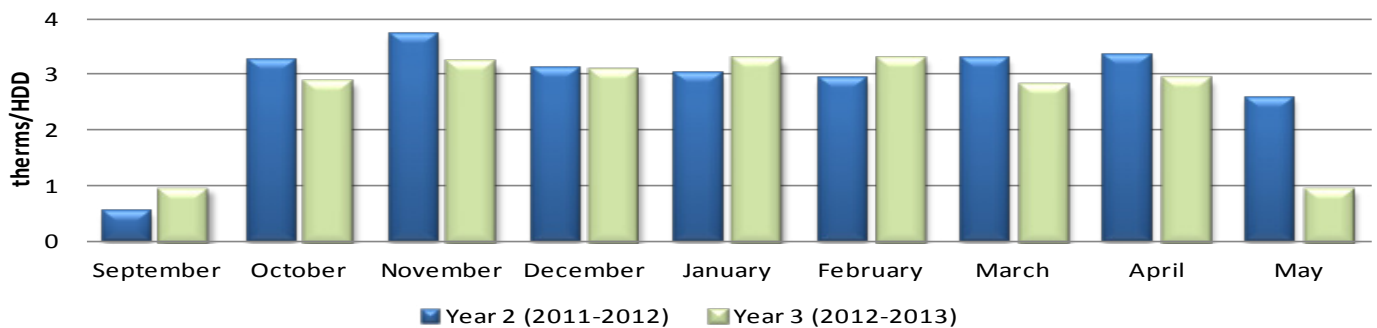
Elementary School Electricity* Use



*Electricity does not include demand (kW) or associated savings

The elementary school reduced their electricity use by 8.8% or \$2,662 over the last year.

Elementary School Natural Gas Use

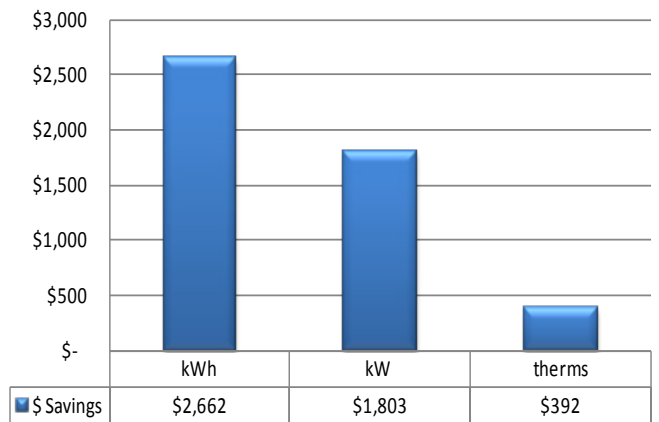


The elementary school reduced their natural gas use by 2.9% or \$392 over the last year.



Elementary school staff were caught conserving energy with their classroom lights off when unoccupied. WAY TO GO!!!

Energy Savings = \$4,857



Completed Energy Projects

HVAC Systems

- Made manual, seasonal adjustments to boilers in high school and elementary school
- Scheduled air handlers off for Columbus Day, Thanksgiving, Christmas break, spring break, and added an unscheduled snow day option
- Developed a plan to upgrade high school and middle school boiler rooms including new boilers, pumps, variable frequency drives for pumps, and Direct Digital Controls

- Lowered static pressure set-points for air handlers
- Turned off one of the two air handlers for middle school lower gym
- Tightened up all air handler schedules to better meet the building occupancy needs

Lighting

Adjustments were made to motion sensors at the elementary school to make the lights turn off sooner

Future Energy Projects

HVAC Systems

- Upgrade boilers in high school and middle school including pumps, VFDs, and controls
- Relocate freeze stat controls in MS air handlers to avoid tripping out air handlers on cold mornings
- Install demand limiting controls at all schools
- Replace remaining pneumatic controls and eliminate air compressors
- Install controls on remaining air handlers that are not on the building automation control system

Lighting

Install multi-level light switching in both middle school gyms to improve control of light levels and reduce energy.

Building Envelope

Replace leaky, inefficient windows in middle school.

Additional Services Provided to the District

Weekly E-Tips

CESA 10 disseminated 37 weekly energy tips (E-tips) via email throughout the 2012-2013 school year.

Quarterly Energy Management Updates

CESA 10 generated (3) three Energy Management Updates (EMUs): June - August 2012, June - November 2012 and June 2012 - February 2013. All EMUs were either disseminated via email as PDFs or hand-delivered.

Classroom Consultations/Site Visits

Energy managers made frequent trips to the district and discussed energy conservation strategies with staff when available. Either 'Caught Conserving' or 'Friendly Reminder to Conserve' post-it notes were used to increase energy awareness when possible.

Energy Management Annual Report is an annual publication of CESA 10's Energy Management Program.

Questions, comments and suggestions can be directed to Melissa Rickert, CESA 10 Energy Manager 715.720.2123 or mrickett@cesal0.k12.wi.us

Open Enrollment Exception Applications for 2013/14

Transfers IN

Grade	Resident District	Reason	Application Date
10	Eau Claire	Best Interests	7/27
6	Eau Claire	Best Interests *	7/22
11	Chippewa Falls	Best Interests	7/22
K4	Fall Creek	Best Interests	7/8
K4	Fall Creek	Best Interests	7/8
KG	Fall Creek	Best Interests	7/8

* Student was already attending in our district (moved out of district)

Transfers OUT

Grade	Nonresident District	Reason	Application Date
11	Eau Claire	Best/Bullying	7/11
K4	Eau Claire	Best	7/8
10	Eau Claire	Best	7/3

Review of Open Enrollment Exception Applications for 2012/13

REASONS:	Applications IN :	REASONS:	Applications OUT:
Best Interests	21	Best Interests	21
Bully	3	Bully	1
Custody Change	0	Custody Change	0
Homeless	2	Homeless	0
Military	0	Military	0
Move from Out of State	0	Move from Out of State	0
Violent Crime Victim	0	Violent Crime Victim	0



Events and News in Eau Claire, Wisconsin

JOIN THE CHAMBER



LINKS

- [Member Events](#)
- [Community Events](#)
- [Submit a Community Event](#)
- [Breakfast in the Valley](#)
- [The Business Expo in Eau Claire](#)
- [Chamber and Member News](#)



[Home](#) > [Events and News](#)

[ShareThis](#)

Eggs & Issues: State of K-12 Education in Eau Claire

Date: 8/16/2013
Time: 7:00 AM TO 8:30 AM

Eau Claire Area Chamber of Commerce
Charter Business Conference Room
101 N Farwell St, Ste 101
Eau Claire, WI 54703

Phone:
(715) 834-1204

[REGISTER](#)

Event Description: As we get ready for a new school year, area school leaders will share with the business community some of the exciting things to look forward to this year as well as some of the challenges area districts are facing. Our guest speakers include: Dr. Connie Biedron – School District of Altoona, Mark Gobler- Regis Catholic Schools and Dr. Mary Ann Hardebeck – Eau Claire Area School District. We will leave time for questions.

To register, call the Chamber at (715) 834-1204 or click on Register. Cost to attend is \$16 and the event is open to Chamber members only.

Directions:

Need more information?

If you need more information about this event, please complete the fields below:

Your Email Address:

Your Name:

Question / Comment:

Send

For general inquiries email us at: information@eauclairchamber.org

[REGISTER](#)

EVENT SPONSORS

Xcel Energy
RESPONSIBLE BY NATURE

LINKS

[Event Location Map](#)
[Current Weather](#)

SET A REMINDER

Don't Forget

Your Email Address

Remind me day(s) prior to the event date.

[Save All Reminders](#)

Attending? [RSVP to Joyce](#)



YOU ARE INVITED

WHAT: NEW STAFF/MENTOR ORIENTATION
LUNCHEON

WHEN: FRIDAY, AUGUST 23

TIME: 12:00 PM (NOON)

WHERE: ALTOONA HIGH SCHOOL LMC

Mentoring Matters

COMPUTER/NETWORK SUPPORT TECHNICIAN CONTRACT

IT IS HEREBY AGREED by and between the Board of Education and the School District of Altoona ("Board" or "District") and Andrew Lierman ("Employee") that said Board does hereby employ Andrew Lierman as the Computer/Network Support Technician.

1. Term: This contract shall begin July 10, 2013 and end June 30, 2015 with a probationary period of one (1) year. This contract shall be for a term of 12 months annually and is considered full-time.
2. Duties: Employee shall perform all duties as may be assigned by the District in conformity with the approved job description.
3. Salary: Employee's salary shall be \$36,251.91 annually for the first year ending June 30, 2014.
4. Benefits: The Board agrees to provide the following fringe benefits:
 - a. Sick Leave: Employee shall be entitled to one (1) sick leave day per month. Sick leave shall be cumulative and such accumulation shall be limited to one hundred (100) days.
 - b. Vacation Leave: Employee shall be entitled to 10 vacation leave days per year.
 - c. Holidays: Employee shall be entitled to the following paid holidays: New Year's Day, Good Friday, Memorial Day, Fourth of July, Labor Day, Thanksgiving Day, Day after Thanksgiving, Christmas Eve Day, Christmas Day, and New Year's Eve Day. And two (2) personal days per year, cumulative to three (3) days.
 - d. Insurances: Employee shall be entitled to coverage under all insurances offered to the professional educators under the Professional Educator's Handbook. Employee shall contribute to the insurance premiums as is set out in the handbook. In lieu of health insurance coverage, Employee may choose to have the Section 125 Plan (cash option) in the amount of \$7,000 per year.
 - e. Retirement: The Board and the Employee shall each pay one-half of the total actuarially required contribution to the Wisconsin Retirement System.
 - f. Early Retirement: Upon the completion of the employee's fifth (5th) consecutive year of service to the District, the District shall establish an HRA account in the employee's name. The account will be fully vested once created.

On December 20th of the sixth (6th) consecutive year of service to the district and each consecutive year following, a deposit of 6% of the yearly salary to a maximum of \$3,000 shall be made to the Employee's HRA Account.

Accumulated sick leave will be paid out at \$60 per day into the Employee's HRA account at the time of retirement.

5. Working Conditions: The Board shall make every reasonable effort to maintain a healthy environment and adequate facilities.
6. Termination: The parties understand that this is a solemn binding contract.

This contract may be terminated prior to the end of the term by mutual agreement of both parties.

The Board may choose not to renew the Employee upon the expiration of this Agreement. The Employee may be discharged during the term of this Agreement for just cause. The Employee shall receive prior written notice of the charges and shall have an opportunity to request and have a fair and impartial hearing before the Board regarding those charges.

The Employee shall have the right to prior written notice of the time and place of said hearing. The Employee shall have the right to demand that the hearing be held in open session. The Employee shall have the right to be represented by counsel of his/her choice at such hearing.

7. Savings: In case of direct conflict between any rules, regulations or policies of the Board and any specific provision of this Agreement, this Agreement shall control. If any article of this Agreement or portion thereof is held to be invalid or if compliance with or enforcement of any part of said article is restrained by any tribunal, the remainder of this Agreement shall not be affected thereby.

The parties hereto having read this Agreement and understanding the provisions hereof, agree to abide by its provisions.

SCHOOL BOARD OF THE SCHOOL DISTRICT OF ALTOONA

As approved on August 5, 2013:

By: _____
President

By: _____
Clerk

Signed this ____ day of _____, 2013, at Altoona Wisconsin.

COMPUTER/NETWORK SUPPORT TECHNICIAN

By: _____
Andrew Lierman

Signed this ____ day of _____, 2013, at Altoona Wisconsin.

**2013-14 School Year
CLUSTER A
66.0301 COOPERATIVE AGREEMENT**

SCHOOL BOARD RESOLUTION

This document will serve as a 66.0301 Cooperative Agreement between the Cluster A school districts for the following purpose.

The school districts of Altoona, Augusta, Eleva-Strum, Fall Creek, Gilmanton, Mondovi, and Osseo-Fairchild each seek to create and maintain educational programs that assist students in becoming successful, productive members of society. To better achieve this goal, these seven districts agree to cooperate with each other to provide expanded educational opportunities for their students. Collectively these seven districts will be known as Cluster A.

As members of Cluster A, each of these seven districts will participate in the development and maintenance of shared academic, vocational, and/or integrated programs. Each district will allocate resources, including people, money, supplies, transportation services, and equipment in a manner that supports the accomplishment of cooperatively determined Cluster goals.

CONDITIONS

Pursuant to a resolution adopted by the school districts of the Cluster A schools, the districts mutually agree, pursuant to Section 66.0301 of the Wisconsin Statutes, to the following conditions:

1. That said above parties agree and contract for the administration and expenses of cooperative programs of Cluster A as hereinafter set forth;
2. That the School District of Fall Creek be the operator and fiscal agent;
3. That the School District of Fall Creek, as the fiscal agent, will include all program expenditures and receipts in Fund 99 of the Wisconsin Uniform Financial Accounting Requirements (WUFAR);
4. That the cost to the Cluster A Schools be determined five (5) days prior to June 30, annually, on the basis of participation and actual program costs;
5. That estimated budget and plan of operation for this cooperative be approved in advance of contract signing by all school district parties hereto;

6. That significant variations from the budget will require prior approval of all school districts hereto;
7. That unemployment compensation will be the responsibility of all districts and each district's share of the cost will be based on percentage of use;
8. That the Cluster A Schools agree to pay the School District of Fall Creek according to the following schedule: One invoice will be mailed in November with the option of one or two installments, the first due in December and the second in January; and a final payment for the balance of final actual cost by June 30;
9. That the School District of Fall Creek, as the fiscal agent, agrees to file the required financial report with the Department of Public Instruction;
11. That notice of intent to non-renew this agreement by any participating district will be due on or before February 1.

Program Costs Based on Current Year Contract:

<u>Service Provided</u>	<u>Estimated Contract Amount</u>
Administration and coordination	\$ 9,406

Altoona School District

District Administrator	Date	School Board President	Date
------------------------	------	------------------------	------

Cluster A

Cluster A Representative	Date
--------------------------	------

Contracted Service Agreements

An agreement exists between the School District of Fall Creek and the Cluster A Schools whereby the School District of Fall Creek will provide the coordinator to serve the staff/students of the Cluster A Schools under the terms listed below:

It is agreed that:

- Total time for contract includes the amount of time for the following:
 - Direct/indirect services
 - Consultation
 - Cluster A staff travel to and from the Cluster A schools, beginning in Fall Creek for the Coordinator
- The provider(s) of services will participate in Cluster A department meetings/professional development.
- The School District of Fall Creek will provide access to a networked computer and the ability to print documents in a confidential location.

SCHOOL DISTRICT OF ALTOONA

2012-2013 Budget Revisions Expenditures

Fund 10									
		2012-13				2012-13	2012-13	2012-13	Unexpended
Fd T Loc Obj Func Prj	Func	Original Budget	1st Revisions	2nd Revisions	3rd Revisions	Budget Revisions	Revised Budget	FY Activity	Balance
10 E ---- 11-----	UNDIFF CURRICULUM	2,972,373.00	13,100.00	21,186.00	-	34,286.00	3,006,659.00	3,006,486.01	172.99
10 E ---- 12-----	REGULAR CURRICULUM	4,136,442.00	(164,401.00)	(117,168.00)	-	-281,569.00	3,854,873.00	3,698,586.23	156,286.77
10 E ---- 13-----	VOCATIONAL CURRICULUM	372,396.00		(17,733.00)	-	-17,733.00	354,663.00	351,968.89	2,694.11
10 E ---- 14-----	PHYSICAL CURRICULUM	368,655.00		(10,251.00)	-	-10,251.00	358,404.00	354,328.02	4,075.98
10 E ---- 16-----	CO-CURRICULAR ACTIVITIES	216,794.00		(5,314.00)	-	-5,314.00	211,480.00	192,387.54	19,092.46
10 E ---- 17-----	SPECIAL NEEDS	95,474.00		-	-		95,474.00	85,854.68	9,619.32
10 E ---- 21-----	PUPIL SERVICES	478,341.00		-	-		478,341.00	468,619.59	9,721.41
10 E ---- 22-----	INSTRUCTIONAL STAFF SERVICES	836,052.00		159,500.00	-	159,500.00	995,552.00	994,879.86	672.14
10 E ---- 23-----	GENERAL ADMINISTRATION	357,154.00		3,500.00	-	3,500.00	360,654.00	359,932.67	721.33
10 E ---- 24-----	SCHOOL BUILDING ADMINISTRATION	721,311.00	22,570.00	7,000.00	-	29,570.00	750,881.00	748,947.78	1,933.22
10 E ---- 25-----	BUSINESS ADMINISTRATION	2,457,275.00		(55,132.00)	-	-55,132.00	2,402,143.00	2,401,982.43	160.57
10 E ---- 26-----	CENTRAL SERVICES	78,897.00		-	-		78,897.00	69,506.65	9,390.35
10 E ---- 27-----	INSURANCE/DISTRICT	153,700.00		-	-		153,700.00	143,962.81	9,737.19
10 E ---- 28-----	DEBT SERVICES - SHORT TERM	50,300.00		(49,000.00)	-	-49,000.00	1,300.00	333.34	966.66
10 E ---- 29-----	OTHER SUPPORT SERVICES	11,914.00	690.00	-	-	690	12,604.00	12,604.00	
10 E ---- 41-----	INTERFUND TRANSFERS	1,365,098.00		-	165,160.73	165,160.73	1,530,258.73	1,530,257.36	1.37
10 E ---- 43-----	GENERAL TUITION PAYMENTS	892,475.00	123,976.00	93,000.00	-	216,976.00	1,109,451.00	1,108,388.39	1,062.61
10 - - - - - - - - - -	GENERAL	15,564,651.00	(4,065.00)	29,588.00	165,160.73	190,683.73	15,755,334.73	15,529,026.25	226,308.48

SCHOOL DISTRICT OF ALTOONA

2012-2013 Budget Revisions Revenues

Fund 27									
		2012-13				2012-13	2012-13	2012-13	Unreceived
Fd T Loc Obj Func Prj	Src	<u>Original Budget</u>	<u>1st Revision</u>	<u>2nd Revision</u>	<u>3rd Revision</u>	<u>Total Revisions</u>	<u>Revised Budget</u>	<u>FY Activity</u>	<u>Balance</u>
27 R 800 11- -----	OPERATING TRANSFERS-IN	1,365,098.00					1,365,098.00	1,521,042.73	-155,944.73
27 R 800 31- -----	TRANSIT OF AIDS-INTERDISTRICT	25,469.00	(25,469.00)		0.00	(25,469.00)			
27 R 800 34- -----	GRANTS-OTHER SCHOOL DISTRICTS	37,650.00	(12,650.00)		0.00	(12,650.00)	25,000.00	25,178.87	-178.87
27 R 800 51- -----	TRANSIT OF AIDS-INTERMED SRCES	110,000.00			0.00		110,000.00	115,076.00	-5,076.00
27 R 800 58- -----	MEDICAL SERVICE REIMBURSEMENTS	157,349.00	(67,349.00)		-23,200.00	(90,549.00)	66,800.00	66,804.78	-4.78
27 R 800 61- -----	STATE AID-CATEGORICAL	436,500.00			0.00		436,500.00	461,068.00	-24,568.00
27 R 800 62- -----	STATE AID-GENERAL	7,365.00	(7,365.00)		0.00	(7,365.00)			
27 R 800 73- -----	SPECIAL PROJECTS GRANTS	299,226.00	(112,833.00)		27,361.00	(85,472.00)	213,754.00	228,549.84	-14,795.84
27 R 800 98- -----	OTHER MEDICAL SERVICE REIMBURSEMENT				0.00			42.26	-42.26
27 R --- -----	Revenue	2,438,657.00	(225,666.00)	0.00	4,161.00	(221,505.00)	2,217,152.00	2,417,762.48	-200,610.48
27 - -----	SPECIAL EDUCATION FUND	2,438,657.00				(221,505.00)	2,217,152.00	2,417,762.48	-200,610.48