



# School District of Altoona

809 7<sup>th</sup> St West Altoona, WI 54720  
715-839-6032 715-839-6066 FAX

Dr. Connie Biedron, Superintendent

[www.altoona.k12.wi.us](http://www.altoona.k12.wi.us)

## ALTOONA BOARD OF EDUCATION

Regular Meeting  
District Board Room  
809 7<sup>th</sup> Street West  
January 5, 2015  
6:30 p.m.

### *Agenda*

1. Call to Order
2. Roll Call
3. Reading of Public Notice
4. Pledge of Allegiance
5. Rules for Meeting
6. Approval of Minutes
  - a. December 15, 2014 Special Meeting/Public Hearing
  - b. December 15, 2014 Regular Meeting
7. Public Participation (All remarks are to be addressed to the Board; discussion among citizens present is not permitted. Board members may ask questions of a speaker; however, no formal deliberations are allowed at this time.)
  - a. Non-Agenda items - public comment and concern
  - b. Agenda items - public comment and concern
8. Treasurer's Report.
  - a. Approval of Checks for Payment
    - (1) General Fund checks totaling \$890,759.59
    - (2) Student Activity Fund checks totaling \$432.95
9. Information
  - a. School Showcase
    - (1) Student Representative's Update
  - b. Committee Reports
  - c. General Information
  - d. President's Report
  - e. Superintendent's Report
    - (1) On Track for the Future – Building Projects Update
      - (a) Site Feasibility Study Report, SEH
      - (b) Architect's Report, ADG

Please note meeting location:  
NEW District Board Room,  
809 7<sup>th</sup> Street West

Altoona Board of Education, January 5, 2015

- (2) 2015/16 Calendar – School Start Date Waiver
  - (3) Library Board Meeting, December 18
  - (4) Other Meetings, News and Events (Items announced in this category are not intended for discussion)
10. Board Action after Consideration and Discussion
    - a. Consider Retirement of School Psychologist
    - b. Consider Employment Recommendation to Fill Extra Assignment Positions for 2014/15
    - c. Consider Amendment of Policy 460 – Student Awards and Scholarships
    - d. Consider Approval of 462-Rule – Procedures for Awarding the Wisconsin Technical Excellence Scholarship
    - e. Consider Approval of 462-Exhibit – Student Declaration of Interest for Being Considered for Technical Excellence Scholarship
    - f. Consider 2015 WASB Resolutions and Give Direction to Delegate
  11. Anticipated Closed Session as Per Section 19.85 (1)(c) - Wisc. Statutes
    - a. Consider closed session minutes for June 2, 2014
    - b. Consider employment, promotion, compensation or performance evaluation data of any public employee over which the governmental body has jurisdiction or exercises responsibility – Review of Performance Evaluation Data - Administration – 19.85 (1)(c)
    - c. Consider employment, promotion, compensation or performance evaluation data of any public employee over which the governmental body has jurisdiction or exercises responsibility – Annual Evaluation of the Superintendent – 19.85 (1)(c)
  12. Reconvene into Open Session and Take any Necessary Action
  13. Adjournment

*The vision of the Altoona School District, in partnership with our students, their families, and our community, is to build a foundation for life-long learning and the emotional well-being of our students. We are dedicated to offering large school opportunities with a small school approach.*

## **ALTOONA SCHOOL BOARD AGREEMENT**

- We base our decisions on the best interest of the students.
- We are guided by our Vision, Mission and our Strategic Plan.
- We believe that every employee makes a contribution to the success of every student.
- We conduct ourselves within commonly understood principles of integrity.
- We listen carefully and respectfully to ensure all voices are heard.
- We practice good stewardship of our tax dollars.
- We seek to operate with as much transparency as possible.
- We do not engage in drama or political rhetoric.
- We seek a way around obstacles; reframing from an attitude of “we can’t,” to “how can we?”

Adopted: 9/19/11

Amended: 1/21/13



# School District of Altoona

809 7<sup>th</sup> Street West Altoona, WI 54720  
715-839-6032 715-839-6066 FAX

Dr. Connie Biedron, Superintendent

www.altoona.k12.wi.us

ALTOONA BOARD OF EDUCATION  
Special Meeting/Public Hearing  
Altoona Commons Addition  
1827 Bartlett Avenue  
December 15, 2014  
6:30 p.m.

1. The Special Meeting of the Altoona Board of Education/Public Hearing was called to order by Board President, Helen Drawbert at 6:34 p.m. in the Altoona commons addition.
2. Roll call was taken and the following were present and absent:  
Helen S. Drawbert, President  
Robin E. Elvig, Vice President; Absent  
Michael J. Hilger, Clerk  
Bradley D. Poquette, Treasurer  
David A. Rowe, Member  
Dr. Connie M. Biedron, Superintendent  
Joyce M. Orth, Board Secretary
3. Reading of Public Notice. Report of notice was given. All posting requirements were met and posting places are noted: Altoona City Hall, Altoona Post Office, school district office, high school office, middle school office, and elementary school office.
4. **Public Hearing on the School District's Request for a School Start Date Waiver for the 2015/16 School Year Allowing a School Start Date Prior to September 1, 2015 Due to Major Construction.** Dr. Biedron reviewed the school start date law and the process to request a waiver. The proposed calendar for 2015/16, which features a start date of August 19, 2015, was also reviewed. Following a question and answer period, there was no opposition from the public in attendance. The school board will discuss and take action on the calendar and the waiver request during the Regular Meeting (10.c. (1); 11.b.).
5. Adjournment. Motion by Rowe to adjourn at 6:47 p.m., seconded by Poquette. Elvig, absent; Rowe, yes; Hilger, yes; Poquette, yes; Drawbert, yes. Motion carried 4-0.

Joyce M. Orth CAP, Board Secretary

\_\_\_\_\_  
District Clerk

\_\_\_\_\_  
Date

*The vision of the Altoona School District, in partnership with our students, their families, and our community, is to build a foundation for life-long learning and the emotional well-being of our students. We are dedicated to offering large school opportunities with a small school approach.*



# School District of Altoona

809 7<sup>th</sup> St West Altoona, WI 54720  
715-839-6032 715-839-6066 FAX

Dr. Connie Biedron, Superintendent

[www.altoona.k12.wi.us](http://www.altoona.k12.wi.us)

ALTOONA BOARD OF EDUCATION  
Regular Meeting  
Altoona Commons Addition  
1827 Bartlett Avenue  
December 15, 2014  
6:45 p.m.

1. The Regular Meeting of the Altoona Board of Education was called to order by Board President, Helen Drawbert at 6:48 p.m. in the Altoona commons addition
2. Roll call was taken and the following were present and absent:  
Helen S. Drawbert, President  
Robin E. Elvig, Vice President; Absent  
Michael J. Hilger, Clerk  
Bradley D. Poquette, Treasurer  
David A. Rowe, Member  
Dr. Connie M. Biedron, Superintendent  
Joyce M. Orth, Board Secretary
3. Reading of Public Notice. Report of notice was given. All posting requirements were met and posting places are noted: Altoona City Hall, Altoona Post Office, school district office, high school office, middle school office, and elementary school office.
4. Pledge of Allegiance
5. Rules for Meeting
6. Approval of Minutes. a. December 1, 2014 Regular Meeting. Motion by Hilger to approve the December 1 minutes as presented, seconded by Rowe. Elvig, absent; Rowe, yes; Hilger, yes; Poquette, yes; Drawbert, yes. Motion carried 4-0. b. December 10, 2014 Special Meeting. Motion by Rowe to approve the December 10 minutes as presented, seconded by Hilger. Rowe, yes; Hilger, yes; Poquette, yes; Elvig, absent; Drawbert, yes. Motion carried 4-0.
7. Public Participation. a. Non-Agenda items - public comment and concern. (1) Dave Rowe mentioned last week's middle school concert, and others joined him in recognizing the students and teachers for their performance. The high school concert will be held on Monday, December 22 at 7:00 p.m. b. Agenda items - public comment and concern. None.
8. Treasurer's Report. a. Approval of Checks for Payment. Motion by Rowe to approve General Fund checks totaling \$498,413.26 and Student Activity Fund checks totaling \$18,478.31 as presented, seconded by Hilger. Hilger, yes; Poquette, yes; Elvig, absent; Rowe, yes; Drawbert, yes. Motion carried 4-0. b. Approval of Treasurer's Report. Motion by Rowe to approve the Treasurer's Report as presented, seconded by Hilger. Poquette, yes; Elvig, absent; Rowe, yes; Hilger, yes; Drawbert, yes. Motion carried 4-0.

9. Financial Update and Workshop. a. Budget Update. Expenditures and revenues as of December 10, 2014 were included in packets. b. Overview of Bond Issuance Process. Michael Markgren, business manager, shared a follow-up overview of the bond issuance process for public entities, the structure of our bonds, interest income projections, and next steps.
  
10. Information. **a. Committee Reports.** (1) Altoona Parks and Recreation Committee. The December 15 committee meeting was reviewed. Contracts for field and concession stand rental, park facility fees, and adult softball league fees were among the topics of discussion. Brad Poquette serves as the board's representative to the committee. **b. General Information.** (1) About the Wisconsin Technical Excellence Scholarship. The information bulletin from the State of Wisconsin Higher Educational Aids Board (HEAB) was included in packets. Beginning in 2015, a new scholarship known as the Technical Excellence Scholarship (TES) will be awarded to Wisconsin high school seniors who have the highest demonstrated level of proficiency in technical education subjects. A February 25 deadline has been extended to March 23 in this initial scholarship year (2015). (2) Policy Discussion. Policy 460 - Student Awards and Scholarships, 462-Rule – Procedures for Awarding the Wisconsin Technical Excellence Scholarship, 462-Exhibit – Student Declaration of Interest for Being Considered for Technical Excellence Scholarship were reviewed. **c. President's Report.** (1) Any Follow-up Discussion from the Public Hearing Regarding the Request for the School Start Date Waiver. Dr. Biedron reviewed the recommendation for a school start date waiver due to construction, and answered any follow-up questions from the board. See 11.b. (2) Superintendent Evaluation Process. Policy 225 – Evaluation of the Superintendent and 225-Exhibit – Superintendent Evaluation were included in packets. Board members will complete the evaluation process prior to the January 5 meeting. (3) Elementary School Name. The name of the new elementary school was discussed. While board members did not express an opinion about keeping the Pedersen name, they did suggest getting input from other groups and the community. In addition, a policy to address the naming of facilities should be established. **d. Superintendent's Report.** (1) Monthly Enrollment Report. Student enrollments as of December 11, 2014 were reviewed: Pedersen, 584; intermediate school, 242; middle school, 312; and high school, 421 for a total of district total of 1559. (2) First Lego Robotics – Team Da Brainiac Update. A Leader-Telegram article featuring Team Da Brainiac was included in packets. After qualifying at Regionals in November, the team competed at Sectionals in Oshkosh on December 7. (3) Hour of Code. Classrooms throughout the district participated in an Hour of Code during the week of December 8. Hour of Code is held in celebration of Computer Science Education Week. (4) On Track for the Future - Building Projects Update. Dr. Biedron reviewed the current status of projects. Working with our architect, KFI Engineers has finalized their review of the mechanical engineering needs on the Bartlett Avenue campus, and found the boiler systems can be reduced to two. Elementary plans are hopeful for presentation at the January 5 board meeting. (5) Other Meetings, News and Events (Items announced in this category are not intended for discussion). The following were announced: UW-Stout professor and student teachers visited 4-5 grade students today, and a December 17 meeting with Chief James regarding the School Resource Officer position.
  
11. Board Action after Consideration and Discussion. a. Consider Appointment of Medical Advisor for 2014/15. Motion by Rowe to appoint Dr. Kevin Gilmartin MD as the medical advisor for 2014/15 as recommended, seconded by Hilger. Elvig, absent; Rowe, yes; Hilger, yes; Poquette, yes; Drawbert, yes. Motion carried 4-0. b. Consider Adoption of 2015/16 Calendar Pending DPI Approval of the School Start Date Waiver. Motion by Poquette to approve the request of waiver by adoption of the 2015/16 calendar; calendar contingent on the DPI's joint approval of the waiver request, seconded by Hilger. Rowe, yes; Hilger, yes; Poquette, yes; Elvig, absent; Drawbert, yes. Motion carried 4-0. See 10c. (1).

c. Consider Recommendation for Full-Time Technology Education Teacher Position. Motion by Hilger to approve an additional full-time technology education teacher position starting second semester 2014/15 as recommended, seconded by Rowe. Hilger, yes; Poquette, yes; Elvig, absent; Rowe, yes; Drawbert, yes. Motion carried 4-0.

12. Adjournment. Motion by Rowe to adjourn at 8:25 p.m., seconded by Poquette. Poquette, yes; Elvig, absent; Rowe, yes; Hilger, yes; Drawbert, yes. Motion carried 4-0.

The next Regular Meeting of the Altoona Board of Education is scheduled for Monday, January 5, 2015 at 6:30 p.m. in the District board room, 809 7<sup>th</sup> Street West, Altoona.

Joyce M. Orth CAP, Board Secretary

---

District Clerk

---

Date

*The vision of the Altoona School District, in partnership with our students, their families, and our community, is to build a foundation for life-long learning and the emotional well-being of our students. We are dedicated to offering large school opportunities with a small school approach.*

CHECK DATE	CHECK ACCOUNT			VENDOR	INVOICE DESCRIPTION	AMOUNT
	NUMBER	NUMBER	NUMBER			
12/11/2014	130874	10 E 800 310 252000		EDUCATORS BENEFIT CONSULTANTS	HRA ADMINISTRATION	288.00
					Totals for 130874	288.00
12/11/2014	130875	10 E 100 411 253300		HILLYARD, INC - EAU CLAIRE	REPLACED CABLE - TERRA 128 SWEEPER	60.30
	130875	10 E 200 411 253300		HILLYARD, INC - EAU CLAIRE	REPLACED CABLE - TERRA 128 SWEEPER	60.30
	130875	10 E 400 411 253300		HILLYARD, INC - EAU CLAIRE	REPLACED CABLE - TERRA 128 SWEEPER	60.30
	130875	10 E 100 411 253300		HILLYARD, INC - EAU CLAIRE	INSTALLED CLEVIS KIT AND PUSH CAPS - ADVANCE AQUACLEAN 15	24.63
	130875	10 E 200 411 253300		HILLYARD, INC - EAU CLAIRE	INSTALLED CLEVIS KIT AND PUSH CAPS - ADVANCE AQUACLEAN 15	24.63
	130875	10 E 400 411 253300		HILLYARD, INC - EAU CLAIRE	INSTALLED CLEVIS KIT AND PUSH CAPS - ADVANCE AQUACLEAN 15	24.64
					Totals for 130875	254.80
12/11/2014	130876	27 E 700 411 158000		PETTY CASH FUND	Petty Cash for Cooking and Community Outings	97.88
					Totals for 130876	97.88
12/11/2014	130877	27 E 700 411 223300		QUILL CORPORATION	Supplies	36.86
					Totals for 130877	36.86
12/11/2014	130878	10 E 400 354 120000		RYDIN DECAL	2015-2016 student parking tags	286.10
					Totals for 130878	286.10
12/11/2014	130879	10 E 100 320 254300		SOUND SERVICE COMPANY	re-program bell systems in elem. and middle school	85.00
	130879	10 E 200 320 254300		SOUND SERVICE COMPANY	re-program bell systems in elem. and middle school	85.00
					Totals for 130879	170.00
12/11/2014	130880	10 E 800 310 231100		WI DEPARTMENT OF JUSTICE	Background Checks	63.00
					Totals for 130880	63.00
12/12/2014	130881	10 E 800 355 263300		AT&T	TELEPHONE - 2014/15 BLANKET ORDER	1,087.91
					Totals for 130881	1,087.91
12/12/2014	130882	27 E 800 370 436000		CLINCARE CORP/EC ACADEMY DIV	Eau Claire Academy, Eighth Grade Student	725.48
					Totals for 130882	725.48
12/12/2014	130883	10 E 800 310 231400		EAU CLAIRE COUNTY TREASURER	Ballots & Referendum question	625.30
					Totals for 130883	625.30
12/12/2014	130884	10 E 800 320 254490		DATA FINANCIAL INC.	Repair coin machine/DO	149.00
					Totals for 130884	149.00
12/12/2014	130885	10 E 800 310 231100		DEPT OF HEALTH SVCS - DPH-HIP-	Birth Records for Census	115.72
					Totals for 130885	115.72
12/12/2014	130886	10 E 800 310 252105		DIVERSIFIED BENEFIT SERVICES I	Blanket order for HRA-Health Reimbursement Arrangement	795.00



CHECK	CHECK ACCOUNT				INVOICE		
DATE	NUMBER	NUMBER	VENDOR		DESCRIPTION	AMOUNT	
					Administrative Services		
					Totals for 130886	795.00	
12/12/2014	130887	10 E 800 293 291000	EMPLOYEE BENEFITS COOPERATIVE		Employer	750.00	
					Contribution/Struck-Knudson		
					Totals for 130887	750.00	
12/12/2014	130888	10 E 400 320 254300	J.H. LARSON COMPANY		toilet spuds	16.31	
					Totals for 130888	16.31	
12/12/2014	130889	27 E 800 370 436000	LE PHILLIPS CAREER DEVELOPMENT		LE Phillips Alternate Youth	308.00	
					Program. B.Her		
					Totals for 130889	308.00	
12/12/2014	130890	10 E 800 730 270000	UNEMPLOYMENT INSURANCE		Blanket order for	747.38	
					Unemployment Insurance		
					Totals for 130890	747.38	
12/12/2014	130891	10 E 400 310 125400	WANAMAKER, DANIEL		Accompanying fee for fall	125.00	
					concert		
					Totals for 130891	125.00	
12/12/2014	130892	10 E 400 411 125400	WEST MUSIC COMPANY		Music for Dorian. Invoice	6.15	
					already in DO.		
	130892	10 E 400 411 125400	WEST MUSIC COMPANY		Music for Dorian Festival	63.50	
					Totals for 130892	69.65	
12/23/2014	130893	10 L 000 000 811680	OKLAHOMA DEPARTMENT OF HUMAN S		Payroll accrual	244.89	
					Totals for 130893	244.89	
12/23/2014	130894	50 L 000 000 811690	RBS CITIZENS N.A.		Payroll accrual	43.13	
					Totals for 130894	43.13	
12/23/2014	130895	10 L 000 000 811680	WI SCTF		Payroll accrual	46.98	
	130895	27 L 000 000 811680	WI SCTF		Payroll accrual	7.02	
	130895	10 L 000 000 811680	WI SCTF		Payroll accrual	164.00	
					Totals for 130895	218.00	
12/16/2014	130896	10 E 800 310 263300	CENTURYLINK - BUSINESS SERVICE		Long Distance Telephone	135.38	
					service		
					Totals for 130896	135.38	
12/16/2014	130897	10 E 800 358 221910	CHARTER COMMUNICATIONS		Cable in the Classroom	28.46	
					digital receivers		
					Totals for 130897	28.46	
12/16/2014	130898	10 E 800 310 211100	EAU CLAIRE AREA HMONG MUTUAL A		Hmong Interpreter for Fall	60.30	
					Parent/Teacher conferences		
					Totals for 130898	60.30	
12/16/2014	130899	27 E 700 411 158000	PETTY CASH FUND		Petty Cash for Cooking and	95.66	
					Community Outings		
					Totals for 130899	95.66	
12/16/2014	130900	10 E 200 411 125500	SCHMITT MUSIC CENTERS		Repair Bill	90.00	
	130900	10 E 200 411 125500	SCHMITT MUSIC CENTERS		Repair Bill	146.50	

CHECK DATE	CHECK ACCOUNT			VENDOR	INVOICE DESCRIPTION	AMOUNT
	NUMBER	NUMBER	NUMBER			
					Totals for 130900	236.50
12/16/2014	130901	10 E 800 310	162101	SCHRANK, BENJAMIN	Final payment to Ben Schrank for choreography/show design.	1,000.00
					Totals for 130901	1,000.00
12/18/2014	130902	10 E 200 411	122000	EAU CLAIRE CITY OF - CITY BUS	bus passes for homeless family	45.00
					Totals for 130902	45.00
12/18/2014	130903	10 E 100 411	253300	HILLYARD, INC - EAU CLAIRE	SUPPLIES	194.22
	130903	10 E 200 411	253300	HILLYARD, INC - EAU CLAIRE	SUPPLIES	194.22
	130903	10 E 400 411	253300	HILLYARD, INC - EAU CLAIRE	SUPPLIES	194.23
	130903	10 E 100 411	253300	HILLYARD, INC - EAU CLAIRE	SUPPLIES	39.93
	130903	10 E 200 411	253300	HILLYARD, INC - EAU CLAIRE	SUPPLIES	39.93
	130903	10 E 400 411	253300	HILLYARD, INC - EAU CLAIRE	SUPPLIES	39.94
	130903	10 E 100 411	253300	HILLYARD, INC - EAU CLAIRE	SCRUBBER REPAIR	46.08
	130903	10 E 200 411	253300	HILLYARD, INC - EAU CLAIRE	SCRUBBER REPAIR	46.08
	130903	10 E 400 411	253300	HILLYARD, INC - EAU CLAIRE	SCRUBBER REPAIR	46.09
	130903	10 E 100 411	253300	HILLYARD, INC - EAU CLAIRE	Blanket PO	24.80
	130903	10 E 200 411	253300	HILLYARD, INC - EAU CLAIRE	Blanket PO	24.80
	130903	10 E 400 411	253300	HILLYARD, INC - EAU CLAIRE	Blanket PO	24.80
					Totals for 130903	915.12
12/18/2014	130904	10 E 800 435	122000	HOUGHTON MIFFLIN COMPANY	Easy CBM 110 Seats for K-8	440.00
					Totals for 130904	440.00
12/18/2014	130905	10 E 400 320	254300	J.H. LARSON COMPANY	toilet spuds	30.47
					Totals for 130905	30.47
12/18/2014	130906	27 E 700 411	223300	QUILL CORPORATION	Office supplies	14.37
					Totals for 130906	14.37
12/19/2014	130907	10 E 400 949	162120	SCHOOL DISTRICT OF SPARTA	Dance competition entry fee	200.00
					Totals for 130907	200.00
12/22/2014	130908	10 E 800 411	254200	EAU CLAIRE COUNTY HIGHWAY DEPT	salt/sand for parking lots	197.91
					Totals for 130908	197.91
12/22/2014	130909	10 E 800 348	254500	EXXON MOBIL - PROCESSING CENTE	NOV/DEC GAS PURCHASES	836.77
					Totals for 130909	836.77
12/22/2014	130910	10 E 800 320	254200	FIBRENEW	Plastic repair to Elementary play structure.	200.00
					Totals for 130910	200.00
12/22/2014	130911	10 E 800 310	162101	GROKOWSKY, JENNIFER	Choreography for In Training, middle school show choir	600.00
					Totals for 130911	600.00
12/22/2014	130912	10 E 400 320	254300	J.H. LARSON COMPANY	faucets for high school and middle school. one each	102.50
	130912	10 E 400 411	253300	J.H. LARSON COMPANY	faucets for high school and middle school. one each	102.50
					Totals for 130912	205.00

CHECK DATE	CHECK ACCOUNT			VENDOR	INVOICE DESCRIPTION	AMOUNT
	NUMBER	NUMBER	NUMBER			
12/22/2014	130913	10 E 400 354	161100	JOSTEN'S	Diploma's for 2014-2015 graduates	579.36
					Totals for 130913	579.36
12/22/2014	130914	10 E 100 411	110200	MICON CINEMAS	Movie theater check for Micon Cinemas.	665.00
					Totals for 130914	665.00
12/22/2014	130915	10 E 400 310	161306	PIONEER DRAMA SERVICE, INC.	Royalties for Spring Play	130.00
					Totals for 130915	130.00
12/22/2014	130916	10 E 100 320	254300	ROSHELL ELECTRIC, INC.	Add receptacles in football locker room.	150.47
	130916	10 E 400 411	162210	ROSHELL ELECTRIC, INC.	installation of electrical outlets in FB/BB locker room	150.46
					Totals for 130916	300.93
12/22/2014	130917	10 E 800 310	162101	SCHRANK, BENJAMIN	Hotel reimbursement.	70.00
					Totals for 130917	70.00
12/22/2014	130918	10 E 800 358	221910	WISNET	Internet Access for Oct - Dec 2014.	1,020.00
					Totals for 130918	1,020.00
12/30/2014	130919	10 E 800 293	291000	EDUCATORS BENEFIT CONSULTANTS	14-15 blanket order for post retirement benefits/Struck & Knudson	750.00
	130919	10 E 800 293	291000	EDUCATORS BENEFIT CONSULTANTS	14-15 blanket order for post retirement benefits/Struck & Knudson	750.00
					Totals for 130919	1,500.00
12/30/2014	130920	10 E 400 411	125400	ALTOONA MUSIC BOOSTERS	NORTH HS SHOW CHOIR REGISTRATION TO LOCO PALOOZA	250.00
					Totals for 130920	250.00
12/30/2014	130921	10 E 400 949	162120	WACPC CHEER/POM COACHES, INC.	regional dance registration fee	250.00
					Totals for 130921	250.00
12/11/2014	141500443	10 E 800 291	221300	BAIN, JENNIFER	3 CREDITS	150.00
					Totals for 141500443	150.00
12/11/2014	141500444	10 E 400 320	254300	EAU CLAIRE ACOUSTICS, INC.	ceiling tile for high school kitchen	55.68
					Totals for 141500444	55.68
12/11/2014	141500445	10 E 100 320	254300	G & K SERVICES, INC.	Blanket P.O.	13.47
	141500445	10 E 200 320	254300	G & K SERVICES, INC.	Blanket P.O.	13.47
	141500445	10 E 400 320	254300	G & K SERVICES, INC.	Blanket P.O.	13.46
	141500445	10 E 100 320	254300	G & K SERVICES, INC.	Blanket P.O.	18.48
	141500445	10 E 200 320	254300	G & K SERVICES, INC.	Blanket P.O.	18.48
	141500445	10 E 400 320	254300	G & K SERVICES, INC.	Blanket P.O.	18.47
	141500445	10 E 100 320	254300	G & K SERVICES, INC.	Blanket P.O.	9.97
	141500445	10 E 200 320	254300	G & K SERVICES, INC.	Blanket P.O.	9.97
	141500445	10 E 400 320	254300	G & K SERVICES, INC.	Blanket P.O.	9.96

CHECK DATE	CHECK ACCOUNT			VENDOR	INVOICE	AMOUNT
	NUMBER	NUMBER	NUMBER		DESCRIPTION	
					Totals for 141500445	125.73
12/11/2014	141500446	10 E 800 291 221300		HAYDEN, SCOTT	2 CREDITS	100.00
					Totals for 141500446	100.00
12/11/2014	141500447	10 E 400 341 256740		KOBUSSEN TRAILWAYS	HOCKEY TO HAYWARD	596.00
					Totals for 141500447	596.00
12/11/2014	141500448	27 E 700 411 215000		PAR, INC	Behavior Rating Inventory of Executive Function - Teacher forms	64.00
					Totals for 141500448	64.00
12/11/2014	141500449	10 E 800 320 254300		RTS ROOFING, INC.	repair roof leaks at the Elem. and High School roofs	702.44
					Totals for 141500449	702.44
12/11/2014	141500450	10 E 400 411 132700		STAPLES	supplies	61.77
	141500450	10 E 150 411 110000		STAPLES	card stock for Staff good	9.31
					news postcards	
	141500450	10 E 400 411 120000		STAPLES	envelopes	39.21
					Totals for 141500450	110.29
12/11/2014	141500452	10 E 200 341 256770		STUDENT TRANSIT EAU CLAIRE, IN	MS TO PLAZA	180.00
	141500452	27 E 800 341 256750		STUDENT TRANSIT EAU CLAIRE, IN	INTRADAY ROUTING	2,948.28
	141500452	10 E 200 341 256740		STUDENT TRANSIT EAU CLAIRE, IN	BB TO AND FROM SOUTH	150.00
	141500452	10 E 400 341 256770		STUDENT TRANSIT EAU CLAIRE, IN	REAL LIFE ACADEMY - OSTRANDER	180.00
	141500452	10 E 800 341 256710		STUDENT TRANSIT EAU CLAIRE, IN	ALTOONA ROUTES	43,130.88
	141500452	10 E 800 341 256710		STUDENT TRANSIT EAU CLAIRE, IN	ELEMENTARY ROUTES	18,058.04
	141500452	10 E 800 341 256710		STUDENT TRANSIT EAU CLAIRE, IN	MID DAY ROUTES	9,025.60
	141500452	10 E 800 341 256710		STUDENT TRANSIT EAU CLAIRE, IN	MONITORS	5,142.00
	141500452	27 E 800 341 256750		STUDENT TRANSIT EAU CLAIRE, IN	MONITORS	1,987.12
	141500452	10 E 400 341 256770		STUDENT TRANSIT EAU CLAIRE, IN	BAND AND SHOW CHOIR TO CHIPPEWA FALLS	420.00
	141500452	27 E 800 341 256750		STUDENT TRANSIT EAU CLAIRE, IN	ALTOONA CONTRACT ROUTE 5	6,966.70
	141500452	10 E 400 341 256740		STUDENT TRANSIT EAU CLAIRE, IN	HOCKEY - MENOMONIE AND WAUSAU	864.90
	141500452	10 E 400 341 256740		STUDENT TRANSIT EAU CLAIRE, IN	GBB TO FALL CREEK	230.00
					Totals for 141500452	89,283.52
12/11/2014	141500453	10 E 100 411 254300		VALLEY BUILDERS & HARDWARE CO	KEYING CHARGE	6.00
	141500453	10 E 200 411 254300		VALLEY BUILDERS & HARDWARE CO	KEYING CHARGE	6.00
	141500453	10 E 400 411 254300		VALLEY BUILDERS & HARDWARE CO	KEYING CHARGE	6.00
					Totals for 141500453	18.00
12/12/2014	141500454	10 E 800 342 221001		BALLENTINE, JEFFERY	Mileage for Jeff Ballentine to attend Ties conference on December 6, 2014. TRA: FMEM	117.60
					Totals for 141500454	117.60
12/12/2014	141500455	10 E 400 411 162105		CHIPPEWA VALLEY SPORTING GOODS	Books and balls.	273.00
	141500455	10 E 200 411 120000		CHIPPEWA VALLEY SPORTING GOODS	indoor recess equipment: nerf balls x 16	144.00
					Totals for 141500455	417.00
12/12/2014	141500456	50 E 800 415 257250		COCA-COLA BOTTLING CO	blanket order Coca-Cola	156.24
					Totals for 141500456	156.24

CHECK DATE	CHECK ACCOUNT				VENDOR	INVOICE DESCRIPTION	AMOUNT
	NUMBER	NUMBER					
12/12/2014	141500457	50 E 800 415 257220	DEAN FOODS OF WISCONSIN		blanket order Dean Foods	3,023.81	
	141500457	50 E 800 415 257250	DEAN FOODS OF WISCONSIN		blanket order Dean Foods	1,679.89	
					Totals for 141500457	4,703.70	
12/12/2014	141500458	50 E 800 415 257220	DOMINOS PIZZA		Dominos Pizza/blanket order	255.00	
					Totals for 141500458	255.00	
12/12/2014	141500459	50 E 800 415 257220	EARTHGRAINS BAKING CO. INC.		blanket order	32.70	
					earthgrains/bimbo bakeries		
	141500459	50 E 800 415 257220	EARTHGRAINS BAKING CO. INC.		blanket order	98.70	
					earthgrains/bimbo bakeries		
					Totals for 141500459	131.40	
12/12/2014	141500460	10 E 800 310 231400	EAU CLAIRE PRESS COMPANY		School Board Election	51.73	
	141500460	10 E 800 435 222200	EAU CLAIRE PRESS COMPANY		Online subscription to Leader Telegram	1,500.00	
					Totals for 141500460	1,551.73	
12/12/2014	141500463	50 E 800 415 257220	INDIANHEAD FOODSERVICE INC		blanket order Indianhead Foodservice	585.40	
	141500463	50 E 800 415 257220	INDIANHEAD FOODSERVICE INC		blanket order Indianhead Foodservice	236.70	
	141500463	50 E 800 415 257220	INDIANHEAD FOODSERVICE INC		blanket order Indianhead Foodservice	2,106.81	
	141500463	50 E 800 415 257220	INDIANHEAD FOODSERVICE INC		blanket order Indianhead Foodservice	1,309.06	
	141500463	50 E 800 415 257220	INDIANHEAD FOODSERVICE INC		blanket order Indianhead Foodservice	83.03	
	141500463	50 E 800 415 257220	INDIANHEAD FOODSERVICE INC		blanket order Indianhead Foodservice	110.34	
	141500463	50 E 800 415 257220	INDIANHEAD FOODSERVICE INC		blanket order Indianhead Foodservice	35.06	
	141500463	50 E 800 415 257220	INDIANHEAD FOODSERVICE INC		blanket order Indianhead Foodservice	833.49	
	141500463	50 E 800 415 257220	INDIANHEAD FOODSERVICE INC		blanket order Indianhead Foodservice	571.59	
					Totals for 141500463	5,871.48	
12/12/2014	141500467	10 E 200 470 125500	JW PEPPER		warm-up book series that will be used at the beginning of class. It contains lots of scale work (in both major and minor keys) and includes chorales as well. These will stay in the classroom and will not be available for students to take home.	178.80	
	141500467	10 E 200 411 125500	JW PEPPER		Material for the MS Festival piece concert in March Bonsai Tree - Julie Giroux <a href="http://www.jwpepper.com/Bonsai-Tree/10189943.item#.VCwgGvldV8E">http://www.jwpepper.com/Bonsai-Tree/10189943.item#.VCwgGvldV8E</a>	70.99	
	141500467	10 E 200 411 125500	JW PEPPER		7th/8th grade concert band	119.99	
	141500467	10 E 200 470 125500	JW PEPPER		warm-up book series that will	82.54	

CHECK DATE	CHECK ACCOUNT		VENDOR	INVOICE	AMOUNT
	NUMBER	NUMBER		DESCRIPTION	
				be used at the beginning of class. It contains lots of scale work (in both major and minor keys) and includes chorales as well. These will stay in the classroom and will not be available for students to take home.	
	141500467	10 E 200 470 125500	JW PEPPER	warm-up book series that will be used at the beginning of class. It contains lots of scale work (in both major and minor keys) and includes chorales as well. These will stay in the classroom and will not be available for students to take home.	13.90
	141500467	10 E 200 470 125500	JW PEPPER	warm-up book series that will be used at the beginning of class. It contains lots of scale work (in both major and minor keys) and includes chorales as well. These will stay in the classroom and will not be available for students to take home.	6.95
				Totals for 141500467	473.17
12/12/2014	141500468	10 E 800 342 232100	ORTH, JOYCE	Mileage and expense reimbursement	52.08
				Totals for 141500468	52.08
12/12/2014	141500469	50 E 800 415 257220	PIZZA HUT OF EAU CLAIRE INC	blanket order Pizza Hut	1,068.90
	141500469	50 E 800 415 257220	PIZZA HUT OF EAU CLAIRE INC	blanket order Pizza Hut	1,109.85
				Totals for 141500469	2,178.75
12/12/2014	141500470	10 E 800 342 221910	SCHEPPKE, MARK	Mileage to TIES Conference	103.60
				Totals for 141500470	103.60
12/23/2014	141500471	10 L 000 000 811670	ING LIFE INS & ANNUITY CO	Payroll accrual	705.00
	141500471	27 L 000 000 811670	ING LIFE INS & ANNUITY CO	Payroll accrual	55.00
	141500471	10 L 000 000 811670	ING LIFE INS & ANNUITY CO	Payroll accrual	160.00
				Totals for 141500471	920.00
12/16/2014	141500472	10 E 100 411 222200	DEMCO, INC .	Tape, anti-slip devices, glue, clips for book shelves for high school and elementary	134.35
	141500472	10 E 400 411 222200	DEMCO, INC .	Tape, anti-slip devices, glue, clips for book shelves for high school and elementary	133.98
				Totals for 141500472	268.33
12/16/2014	141500473	10 E 800 291 221300	HAYDEN, SCOTT	16 CREDITS	800.00
	141500473	10 E 800 291 221300	HAYDEN, SCOTT	CREDIT REIMBURSEMENT	100.00

CHECK DATE	CHECK ACCOUNT				VENDOR	INVOICE DESCRIPTION	AMOUNT
	NUMBER	NUMBER					
						Totals for 141500473	900.00
12/16/2014	141500474	50 E 800 415 257220	INDIANHEAD FOODSERVICE INC		SUPPLIES		2,477.28
	141500474	50 E 800 415 257220	INDIANHEAD FOODSERVICE INC		POLLOCK STICKS		79.68
	141500474	50 E 800 415 257220	INDIANHEAD FOODSERVICE INC		SUPPLIES		1,596.03
	141500474	50 E 800 415 257220	INDIANHEAD FOODSERVICE INC		CHEESE SAUCE		79.99
					Totals for 141500474		4,232.98
12/16/2014	141500476	10 E 100 411 161306	JW PEPPER		BROADWAY SCORE, GOAL PREVIEW, LEMONADE SCORE, MIGHT MINDS		81.95
	141500476	10 E 100 411 161306	JW PEPPER		SUPPLIES FOR PLAY		126.85
	141500476	10 E 100 411 161306	JW PEPPER		Play		134.98
	141500476	10 E 100 411 161306	JW PEPPER		CREDIT - RETURNED SCORES		-81.95
	141500476	10 E 100 411 161306	JW PEPPER		CREDIT - ITEMS RETURNED - INVOICE 07590836		-126.85
	141500476	10 E 200 411 125400	JW PEPPER		Music Order		150.87
					Totals for 141500476		285.85
12/16/2014	141500478	27 E 700 342 221300	MARCZINKE, STEVE		Attend a conference in Appleton		252.57
	141500478	27 E 700 411 158000	MARCZINKE, STEVE		A book and workbook for SPED, at Risk kids and use with High School PBIS program Book: How to be a Successful Criminal: The Real Deal on Crime, Drugs, and Easy Money & Student Activity Workbook on"How to be a Successful Criminal: The Real Deal on Crime, Drugs, and Easy Money" from: Turn Around Publishing Inc.		110.00
					Totals for 141500478		362.57
12/16/2014	141500479	27 E 800 382 436670	SCHOOL DISTRICT OF MENOMONIE		66.0301 - INSTRUCTOR FOR ORIENTATION AND MOBILITY SERVICES		6,950.00
					Totals for 141500479		6,950.00
12/16/2014	141500480	10 E 200 411 121000	SCHOOL SPECIALTY INC.		art supplies		315.34
	141500480	10 E 150 411 121000	SCHOOL SPECIALTY INC.		art supplies		315.34
	141500480	10 E 200 411 121000	SCHOOL SPECIALTY INC.		art supplies		70.58
	141500480	10 E 150 411 121000	SCHOOL SPECIALTY INC.		art supplies		70.60
					Totals for 141500480		771.86
12/16/2014	141500481	10 E 400 310 125400	LANE SCHROEDER		Piano tuning		130.00
	141500481	10 E 400 310 125500	LANE SCHROEDER		Piano Tuning (Band)		130.00
					Totals for 141500481		260.00
12/16/2014	141500482	10 E 800 291 221300	STAMOS, MARY		7 CREDITS		350.00
					Totals for 141500482		350.00
12/16/2014	141500483	10 E 400 411 127000	STAPLES		Office supplies		47.05
					Totals for 141500483		47.05
12/23/2014	141500485	10 L 000 000 811631	WEA INSURANCE TRUST		Payroll accrual		73,613.88

CHECK DATE	CHECK ACCOUNT				INVOICE			AMOUNT
	NUMBER	NUMBER		VENDOR	DESCRIPTION			
12/23/2014	141500485	27 L 000 000	811631	WEA INSURANCE TRUST	Payroll accrual		14,732.34	
	141500485	10 L 000 000	811631	WEA INSURANCE TRUST	Payroll accrual		274.41	
	141500485	27 L 000 000	811631	WEA INSURANCE TRUST	Payroll accrual		47.19	
	141500485	10 L 000 000	811631	WEA INSURANCE TRUST	Payroll accrual		221.30	
	141500485	27 L 000 000	811631	WEA INSURANCE TRUST	Payroll accrual		51.66	
	141500485	10 L 000 000	811631	WEA INSURANCE TRUST	Payroll accrual		8,741.21	
	141500485	27 L 000 000	811631	WEA INSURANCE TRUST	Payroll accrual		1,804.41	
	141500485	10 L 000 000	811631	WEA INSURANCE TRUST	Payroll accrual		1,206.40	
	141500485	27 L 000 000	811631	WEA INSURANCE TRUST	Payroll accrual		241.05	
	141500485	80 L 000 000	811631	WEA INSURANCE TRUST	Payroll accrual		0.00	
	141500485	10 L 000 000	811631	WEA INSURANCE TRUST	Payroll accrual		10,508.68	
	141500485	27 L 000 000	811631	WEA INSURANCE TRUST	Payroll accrual		2,104.72	
	141500485	10 L 000 000	811631	WEA INSURANCE TRUST	Payroll accrual		10,508.68	
	141500485	27 L 000 000	811631	WEA INSURANCE TRUST	Payroll accrual		2,104.72	
	141500485	10 L 000 000	811631	WEA INSURANCE TRUST	Payroll accrual		204.50	
	141500485	27 L 000 000	811631	WEA INSURANCE TRUST	Payroll accrual		51.66	
	141500485	10 L 000 000	811631	WEA INSURANCE TRUST	Payroll accrual		73,613.88	
	141500485	27 L 000 000	811631	WEA INSURANCE TRUST	Payroll accrual		14,732.34	
	141500485	10 L 000 000	811631	WEA INSURANCE TRUST	Payroll accrual		8,741.21	
	141500485	27 L 000 000	811631	WEA INSURANCE TRUST	Payroll accrual		1,804.41	
	141500485	10 L 000 000	811631	WEA INSURANCE TRUST	Payroll accrual		1,214.77	
	141500485	27 L 000 000	811631	WEA INSURANCE TRUST	Payroll accrual		255.50	
	141500485	80 L 000 000	811631	WEA INSURANCE TRUST	Payroll accrual		0.00	
	141500485	10 L 000 000	811631	WEA INSURANCE TRUST	Payroll accrual		274.41	
	141500485	27 L 000 000	811631	WEA INSURANCE TRUST	Payroll accrual		47.19	
	141500485	10 A 000 000	715632	WEA INSURANCE TRUST	JAN 2015 BILLING IN DEC/RETIREE		35,614.72	
					Totals for 141500485		262,715.24	
12/18/2014	141500486	50 E 800 415	257220	DEAN FOODS OF WISCONSIN	MILK		669.91	
	141500486	50 E 800 415	257250	DEAN FOODS OF WISCONSIN	MILK		372.17	
	141500486	50 E 800 415	257220	DEAN FOODS OF WISCONSIN	MILK		75.72	
	141500486	50 E 800 415	257250	DEAN FOODS OF WISCONSIN	MILK		42.06	
	141500486	50 E 800 415	257220	DEAN FOODS OF WISCONSIN	MILK		127.19	
	141500486	50 E 800 415	257250	DEAN FOODS OF WISCONSIN	MILK		70.66	
	141500486	50 E 800 415	257220	DEAN FOODS OF WISCONSIN	MILK		492.56	
	141500486	50 E 800 415	257250	DEAN FOODS OF WISCONSIN	MILK		273.64	
					Totals for 141500486		2,123.91	
12/18/2014	141500487	50 E 800 415	257220	DOMINOS PIZZA	Pizza		277.50	
					Totals for 141500487		277.50	
12/18/2014	141500488	50 E 800 415	257220	EARTHGRAINS BAKING CO. INC.	SUPPLIES		55.20	
	141500488	50 E 800 415	257220	EARTHGRAINS BAKING CO. INC.	SUPPLIES		116.50	
					Totals for 141500488		171.70	
12/18/2014	141500489	50 E 800 411	257220	ECOLAB, INC	DISH WASHER SUPPLIES		319.42	
					Totals for 141500489		319.42	
12/18/2014	141500490	10 E 100 320	254300	G & K SERVICES, INC.	Blanket P.O.		18.48	
	141500490	10 E 200 320	254300	G & K SERVICES, INC.	Blanket P.O.		18.48	
	141500490	10 E 400 320	254300	G & K SERVICES, INC.	Blanket P.O.		18.47	
	141500490	10 E 100 320	254300	G & K SERVICES, INC.	Blanket P.O.		13.47	
	141500490	10 E 200 320	254300	G & K SERVICES, INC.	Blanket P.O.		13.47	
	141500490	10 E 400 320	254300	G & K SERVICES, INC.	Blanket P.O.		13.46	
	141500490	10 E 100 320	254300	G & K SERVICES, INC.	Blanket P.O.		9.97	



CHECK DATE	CHECK ACCOUNT			VENDOR	INVOICE DESCRIPTION	AMOUNT
	NUMBER	NUMBER	NUMBER			
12/18/2014	141500490	10 E 200 320 254300	G & K SERVICES, INC.	Blanket P.O.	9.97	
	141500490	10 E 400 320 254300	G & K SERVICES, INC.	Blanket P.O.	9.96	
				Totals for 141500490	125.73	
12/18/2014	141500491	50 E 800 415 257220	INDIANHEAD FOODSERVICE INC	FRIES AND COOKIE DOUGH	75.55	
	141500491	50 E 800 415 257220	INDIANHEAD FOODSERVICE INC	RETURNED PINEAPPLE	-25.36	
	141500491	50 E 800 415 257220	INDIANHEAD FOODSERVICE INC	SUPPLIES	1,029.60	
	141500491	50 E 800 415 257220	INDIANHEAD FOODSERVICE INC	SUPPLIES	2,557.00	
				Totals for 141500491	3,636.79	
12/18/2014	141500492	10 E 100 320 254300	INNOVATIONAL CONCEPTS, INC.	monthly service on boiler water	179.98	
	141500492	10 E 200 320 254300	INNOVATIONAL CONCEPTS, INC.	monthly service on boiler water	179.98	
	141500492	10 E 400 320 254300	INNOVATIONAL CONCEPTS, INC.	monthly service on boiler water	185.14	
				Totals for 141500492	545.10	
12/22/2014	141500493	21 E 100 411 213000	BAUMAN, AMY	SHOPPING 12/16/14	53.98	
				Totals for 141500493	53.98	
12/22/2014	141500494	10 E 800 386 431000	CESA #10	TITLE ONE SECOND QTR FEES	2,739.45	
				Totals for 141500494	2,739.45	
12/22/2014	141500495	10 E 150 411 110450	GUTSCH, CHRISTINE	Purchase of holiday craft project supplies for AIS.	9.41	
				Totals for 141500495	9.41	
12/22/2014	141500496	10 E 100 320 254300	JOHNSON CONTROLS, INC.	Repairs to Elementary Boiler #1 and repairs to gas furnace in maint. garage.	907.99	
	141500496	10 E 400 320 254300	JOHNSON CONTROLS, INC.	Repairs to Elementary Boiler #1 and repairs to gas furnace in maint. garage.	88.11	
	141500496	10 E 800 320 254300	JOHNSON CONTROLS, INC.	Repairs to Elementary Boiler #1 and repairs to gas furnace in maint. garage.	300.42	
				Totals for 141500496	1,296.52	
12/22/2014	141500497	10 E 800 342 221400	KUCHTA, ROBERTA	TIES Conference MEALS - KUCHTA	34.33	
				Totals for 141500497	34.33	
12/22/2014	141500498	10 E 150 411 110450	LANGLOIS, TERESA	Purchase of holiday craft project supplies for AIS.	14.98	
				Totals for 141500498	14.98	
12/22/2014	141500499	10 E 400 411 121000	NASCO	high school art supplies	24.24	
	141500499	10 E 400 411 121000	NASCO	high school art supplies	664.23	
				Totals for 141500499	688.47	
12/22/2014	141500500	10 E 200 320 254300	NET GUARD SECURITY SOLUTIONS	replace smoke head in gym storage room	65.00	
				Totals for 141500500	65.00	
12/22/2014	141500501	10 E 150 411 128000	PHIPPEN, JILL	Mileage to and from Lego	272.16	

CHECK	CHECK ACCOUNT			INVOICE		AMOUNT
DATE	NUMBER	NUMBER	VENDOR	DESCRIPTION		
				competitions in Menomonie (60 miles) and Oshkosh (426 miles).		
				Totals for 141500501		272.16
12/22/2014	141500502	10 E 800 342 221400	PIERSON, SHELLY	Mileage for TIES Conference December 6-9,		107.52
				Totals for 141500502		107.52
12/22/2014	141500503	27 E 700 411 158000	STAPLES	supplies for students - sharpener, pencils and classroom supplies - sharpener, file folders		67.22
	141500503	10 E 100 411 254300	STAPLES	Expo white board cleaner		101.32
				Totals for 141500503		168.54
12/22/2014	141500504	10 E 800 310 231700	WIPFLI, LLP	MISC CHARGES FOR FINANCIAL ASSISTANCE ON AUDIT		10,625.00
				Totals for 141500504		10,625.00
12/23/2014	201400762	10 L 000 000 811671	GREAT-WEST RETIREMENT SERVICES	Payroll accrual		680.50
	201400762	27 L 000 000 811671	GREAT-WEST RETIREMENT SERVICES	Payroll accrual		500.00
				Totals for 201400762		1,180.50
12/23/2014	201400763	10 L 000 000 811612	WELLS FARGO BANK	Payroll accrual		459.78
	201400763	50 L 000 000 811612	WELLS FARGO BANK	Payroll accrual		40.00
	201400763	80 L 000 000 811612	WELLS FARGO BANK	Payroll accrual		7.50
	201400763	10 L 000 000 811612	WELLS FARGO BANK	Payroll accrual		28,535.23
	201400763	27 L 000 000 811612	WELLS FARGO BANK	Payroll accrual		5,296.18
	201400763	50 L 000 000 811612	WELLS FARGO BANK	Payroll accrual		165.98
	201400763	80 L 000 000 811612	WELLS FARGO BANK	Payroll accrual		11.01
	201400763	10 L 000 000 811611	WELLS FARGO BANK	Payroll accrual		18,736.41
	201400763	27 L 000 000 811611	WELLS FARGO BANK	Payroll accrual		3,937.85
	201400763	50 L 000 000 811611	WELLS FARGO BANK	Payroll accrual		406.54
	201400763	80 L 000 000 811611	WELLS FARGO BANK	Payroll accrual		15.68
	201400763	10 L 000 000 811611	WELLS FARGO BANK	Payroll accrual		4,381.89
	201400763	27 L 000 000 811611	WELLS FARGO BANK	Payroll accrual		920.97
	201400763	50 L 000 000 811611	WELLS FARGO BANK	Payroll accrual		95.06
	201400763	80 L 000 000 811611	WELLS FARGO BANK	Payroll accrual		3.67
				Totals for 201400763		63,013.75
12/23/2014	201400764	10 L 000 000 811611	WELLS FARGO BANK	Payroll accrual		4,381.89
	201400764	27 L 000 000 811611	WELLS FARGO BANK	Payroll accrual		920.97
	201400764	50 L 000 000 811611	WELLS FARGO BANK	Payroll accrual		95.06
	201400764	80 L 000 000 811611	WELLS FARGO BANK	Payroll accrual		3.67
	201400764	10 L 000 000 811611	WELLS FARGO BANK	Payroll accrual		18,736.41
	201400764	27 L 000 000 811611	WELLS FARGO BANK	Payroll accrual		3,937.85
	201400764	50 L 000 000 811611	WELLS FARGO BANK	Payroll accrual		406.54
	201400764	80 L 000 000 811611	WELLS FARGO BANK	Payroll accrual		15.68
				Totals for 201400764		28,498.07
12/23/2014	201400765	10 L 000 000 811613	WISCONSIN DEPT OF REVENUE	Payroll accrual		27.50
	201400765	80 L 000 000 811613	WISCONSIN DEPT OF REVENUE	Payroll accrual		7.50
	201400765	10 L 000 000 811613	WISCONSIN DEPT OF REVENUE	Payroll accrual		13,860.00
	201400765	27 L 000 000 811613	WISCONSIN DEPT OF REVENUE	Payroll accrual		2,719.58
	201400765	50 L 000 000 811613	WISCONSIN DEPT OF REVENUE	Payroll accrual		81.64

CHECK DATE	CHECK ACCOUNT			VENDOR	INVOICE DESCRIPTION	AMOUNT
	NUMBER	NUMBER	NUMBER			
12/23/2014	201400765	80 L 000 000	811613	WISCONSIN DEPT OF REVENUE	Payroll accrual	1.58
					Totals for 201400765	16,697.80
12/23/2014	201400766	10 L 000 000	811621	WISCONSIN RETIREMENT SYSTEM	Payroll accrual	17,413.56
	201400766	27 L 000 000	811621	WISCONSIN RETIREMENT SYSTEM	Payroll accrual	2,960.91
	201400766	10 L 000 000	811622	WISCONSIN RETIREMENT SYSTEM	Payroll accrual	3,514.06
	201400766	27 L 000 000	811622	WISCONSIN RETIREMENT SYSTEM	Payroll accrual	1,126.38
	201400766	50 L 000 000	811622	WISCONSIN RETIREMENT SYSTEM	Payroll accrual	278.90
	201400766	80 L 000 000	811622	WISCONSIN RETIREMENT SYSTEM	Payroll accrual	18.86
	201400766	10 L 000 000	811622	WISCONSIN RETIREMENT SYSTEM	Payroll accrual	3,514.06
	201400766	27 L 000 000	811622	WISCONSIN RETIREMENT SYSTEM	Payroll accrual	1,126.38
	201400766	50 L 000 000	811622	WISCONSIN RETIREMENT SYSTEM	Payroll accrual	278.90
	201400766	80 L 000 000	811622	WISCONSIN RETIREMENT SYSTEM	Payroll accrual	18.86
	201400766	10 L 000 000	811621	WISCONSIN RETIREMENT SYSTEM	Payroll accrual	17,413.56
	201400766	27 L 000 000	811621	WISCONSIN RETIREMENT SYSTEM	Payroll accrual	2,960.91
					Totals for 201400766	50,625.34
12/23/2014	201400767	10 L 000 000	811691	WEA TRUST ADVANTAGE	Payroll accrual	51.19
	201400767	27 L 000 000	811691	WEA TRUST ADVANTAGE	Payroll accrual	62.34
	201400767	10 L 000 000	811691	WEA TRUST ADVANTAGE	Payroll accrual	5,316.25
	201400767	27 L 000 000	811691	WEA TRUST ADVANTAGE	Payroll accrual	500.00
	201400767	80 L 000 000	811691	WEA TRUST ADVANTAGE	Payroll accrual	78.25
	201400767	10 L 000 000	811691	WEA TRUST ADVANTAGE	Payroll accrual	69.85
	201400767	27 L 000 000	811691	WEA TRUST ADVANTAGE	Payroll accrual	28.44
	201400767	10 L 000 000	811691	WEA TRUST ADVANTAGE	Payroll accrual	233.00
	201400767	10 L 000 000	811691	WEA TRUST ADVANTAGE	Payroll accrual	1,608.35
	201400767	27 L 000 000	811691	WEA TRUST ADVANTAGE	Payroll accrual	291.67
	201400767	10 L 000 000	811691	WEA TRUST ADVANTAGE	Payroll accrual	2,012.50
	201400767	27 L 000 000	811691	WEA TRUST ADVANTAGE	Payroll accrual	100.00
					Totals for 201400767	10,351.84
12/23/2014	201400768	10 A 000 000	711100	WELLS FARGO BANK/NET PR & DIRE PR & DIRECT DEPOSIT/12-23-14		203,858.37
	201400768	27 A 000 000	711100	WELLS FARGO BANK/NET PR & DIRE PR & DIRECT DEPOSIT/12-23-14		44,810.43
	201400768	50 A 000 000	711100	WELLS FARGO BANK/NET PR & DIRE PR & DIRECT DEPOSIT/12-23-14		5,427.69
	201400768	80 A 000 000	711100	WELLS FARGO BANK/NET PR & DIRE PR & DIRECT DEPOSIT/12-23-14		108.74
					Totals for 201400768	254,205.23
12/10/2014	201400769	10 E 100 249	110000	DIVERSIFIED BENEFIT SERVICES I HRA PAYMENTS		39.86
	201400769	10 E 100 249	110100	DIVERSIFIED BENEFIT SERVICES I HRA PAYMENTS		75.74
	201400769	10 E 100 249	110101	DIVERSIFIED BENEFIT SERVICES I HRA PAYMENTS		109.25
	201400769	10 E 100 249	110200	DIVERSIFIED BENEFIT SERVICES I HRA PAYMENTS		52.69
	201400769	10 E 100 249	110300	DIVERSIFIED BENEFIT SERVICES I HRA PAYMENTS		62.08
	201400769	10 E 100 249	143000	DIVERSIFIED BENEFIT SERVICES I HRA PAYMENTS		13.42
	201400769	10 E 100 249	213000	DIVERSIFIED BENEFIT SERVICES I HRA PAYMENTS		20.09
	201400769	10 E 100 249	222200	DIVERSIFIED BENEFIT SERVICES I HRA PAYMENTS		15.34
	201400769	10 E 100 249	241000	DIVERSIFIED BENEFIT SERVICES I HRA PAYMENTS		73.19
	201400769	10 E 100 249	253300	DIVERSIFIED BENEFIT SERVICES I HRA PAYMENTS		24.20
	201400769	10 E 100 249	110100	DIVERSIFIED BENEFIT SERVICES I HRA PAYMENTS		17.59
	201400769	10 E 100 249	110101	DIVERSIFIED BENEFIT SERVICES I HRA PAYMENTS		18.52
	201400769	10 E 100 249	110200	DIVERSIFIED BENEFIT SERVICES I HRA PAYMENTS		29.58
	201400769	10 E 100 249	110300	DIVERSIFIED BENEFIT SERVICES I HRA PAYMENTS		14.79
	201400769	10 E 200 249	120000	DIVERSIFIED BENEFIT SERVICES I HRA PAYMENTS		6.99
	201400769	10 E 200 249	120600	DIVERSIFIED BENEFIT SERVICES I HRA PAYMENTS		33.79
	201400769	10 E 200 249	121000	DIVERSIFIED BENEFIT SERVICES I HRA PAYMENTS		2.15
	201400769	10 E 200 249	122000	DIVERSIFIED BENEFIT SERVICES I HRA PAYMENTS		50.23
	201400769	10 E 200 249	123000	DIVERSIFIED BENEFIT SERVICES I HRA PAYMENTS		4.59

CHECK	CHECK ACCOUNT			INVOICE			AMOUNT
DATE	NUMBER	NUMBER		VENDOR	DESCRIPTION		
12/10/2014	201400769	10 E 200 249	124000	DIVERSIFIED BENEFIT SERVICES I	HRA PAYMENTS		19.81
	201400769	10 E 200 249	125400	DIVERSIFIED BENEFIT SERVICES I	HRA PAYMENTS		0.99
	201400769	10 E 200 249	125500	DIVERSIFIED BENEFIT SERVICES I	HRA PAYMENTS		8.82
	201400769	10 E 200 249	125510	DIVERSIFIED BENEFIT SERVICES I	HRA PAYMENTS		17.70
	201400769	10 E 200 249	126000	DIVERSIFIED BENEFIT SERVICES I	HRA PAYMENTS		23.03
	201400769	10 E 200 249	127000	DIVERSIFIED BENEFIT SERVICES I	HRA PAYMENTS		31.79
	201400769	10 E 200 249	132700	DIVERSIFIED BENEFIT SERVICES I	HRA PAYMENTS		9.97
	201400769	10 E 200 249	136320	DIVERSIFIED BENEFIT SERVICES I	HRA PAYMENTS		2.29
	201400769	10 E 200 249	141000	DIVERSIFIED BENEFIT SERVICES I	HRA PAYMENTS		2.20
	201400769	10 E 200 249	143000	DIVERSIFIED BENEFIT SERVICES I	HRA PAYMENTS		18.23
	201400769	10 E 200 249	213000	DIVERSIFIED BENEFIT SERVICES I	HRA PAYMENTS		35.29
	201400769	10 E 200 249	222200	DIVERSIFIED BENEFIT SERVICES I	HRA PAYMENTS		29.45
	201400769	10 E 200 249	241000	DIVERSIFIED BENEFIT SERVICES I	HRA PAYMENTS		45.95
	201400769	10 E 200 249	241100	DIVERSIFIED BENEFIT SERVICES I	HRA PAYMENTS		0.37
	201400769	10 E 200 249	253300	DIVERSIFIED BENEFIT SERVICES I	HRA PAYMENTS		32.72
	201400769	10 E 200 249	254300	DIVERSIFIED BENEFIT SERVICES I	HRA PAYMENTS		15.93
	201400769	10 E 400 249	121000	DIVERSIFIED BENEFIT SERVICES I	HRA PAYMENTS		10.95
	201400769	10 E 400 249	122000	DIVERSIFIED BENEFIT SERVICES I	HRA PAYMENTS		70.59
	201400769	10 E 400 249	123000	DIVERSIFIED BENEFIT SERVICES I	HRA PAYMENTS		30.74
	201400769	10 E 400 249	124000	DIVERSIFIED BENEFIT SERVICES I	HRA PAYMENTS		40.88
	201400769	10 E 400 249	125400	DIVERSIFIED BENEFIT SERVICES I	HRA PAYMENTS		0.99
	201400769	10 E 400 249	125500	DIVERSIFIED BENEFIT SERVICES I	HRA PAYMENTS		8.82
	201400769	10 E 400 249	126000	DIVERSIFIED BENEFIT SERVICES I	HRA PAYMENTS		59.06
	201400769	10 E 400 249	127000	DIVERSIFIED BENEFIT SERVICES I	HRA PAYMENTS		57.25
	201400769	10 E 400 249	141000	DIVERSIFIED BENEFIT SERVICES I	HRA PAYMENTS		3.35
	201400769	10 E 400 249	143000	DIVERSIFIED BENEFIT SERVICES I	HRA PAYMENTS		18.41
	201400769	10 E 400 249	213000	DIVERSIFIED BENEFIT SERVICES I	HRA PAYMENTS		24.82
	201400769	10 E 400 249	222200	DIVERSIFIED BENEFIT SERVICES I	HRA PAYMENTS		29.41
	201400769	10 E 400 249	241000	DIVERSIFIED BENEFIT SERVICES I	HRA PAYMENTS		43.20
	201400769	10 E 400 249	241100	DIVERSIFIED BENEFIT SERVICES I	HRA PAYMENTS		1.18
	201400769	10 E 400 249	253300	DIVERSIFIED BENEFIT SERVICES I	HRA PAYMENTS		30.29
	201400769	10 E 400 249	254300	DIVERSIFIED BENEFIT SERVICES I	HRA PAYMENTS		15.93
	201400769	10 E 400 249	132700	DIVERSIFIED BENEFIT SERVICES I	HRA PAYMENTS		28.82
	201400769	10 E 400 249	136320	DIVERSIFIED BENEFIT SERVICES I	HRA PAYMENTS		15.33
	201400769	10 E 700 249	172000	DIVERSIFIED BENEFIT SERVICES I	HRA PAYMENTS		22.53
	201400769	10 E 800 249	211100	DIVERSIFIED BENEFIT SERVICES I	HRA PAYMENTS		9.79
	201400769	10 E 800 249	214400	DIVERSIFIED BENEFIT SERVICES I	HRA PAYMENTS		11.69
	201400769	10 E 800 249	221910	DIVERSIFIED BENEFIT SERVICES I	HRA PAYMENTS		30.71
	201400769	10 E 800 249	223100	DIVERSIFIED BENEFIT SERVICES I	HRA PAYMENTS		9.39
	201400769	10 E 800 249	232100	DIVERSIFIED BENEFIT SERVICES I	HRA PAYMENTS		33.70
	201400769	10 E 800 249	252000	DIVERSIFIED BENEFIT SERVICES I	HRA PAYMENTS		26.43
	201400769	10 E 800 249	254200	DIVERSIFIED BENEFIT SERVICES I	HRA PAYMENTS		15.93
	201400769	10 E 800 249	254300	DIVERSIFIED BENEFIT SERVICES I	HRA PAYMENTS		16.49
	201400769	10 E 800 249	239000	DIVERSIFIED BENEFIT SERVICES I	HRA PAYMENTS		0.00
	201400769	27 E 700 249	152000	DIVERSIFIED BENEFIT SERVICES I	HRA PAYMENTS		22.53
	201400769	27 E 700 249	158100	DIVERSIFIED BENEFIT SERVICES I	HRA PAYMENTS		5.12
	201400769	27 E 700 249	158320	DIVERSIFIED BENEFIT SERVICES I	HRA PAYMENTS		17.63
	201400769	27 E 700 249	158330	DIVERSIFIED BENEFIT SERVICES I	HRA PAYMENTS		4.48
	201400769	27 E 700 249	158340	DIVERSIFIED BENEFIT SERVICES I	HRA PAYMENTS		3.45
	201400769	27 E 700 249	158510	DIVERSIFIED BENEFIT SERVICES I	HRA PAYMENTS		1.41
	201400769	27 E 700 249	158520	DIVERSIFIED BENEFIT SERVICES I	HRA PAYMENTS		17.63
	201400769	27 E 700 249	158530	DIVERSIFIED BENEFIT SERVICES I	HRA PAYMENTS		17.66
	201400769	27 E 700 249	158710	DIVERSIFIED BENEFIT SERVICES I	HRA PAYMENTS		22.63
	201400769	27 E 700 249	158730	DIVERSIFIED BENEFIT SERVICES I	HRA PAYMENTS		17.64
	201400769	27 E 700 249	158750	DIVERSIFIED BENEFIT SERVICES I	HRA PAYMENTS		17.65
	201400769	27 E 700 249	158760	DIVERSIFIED BENEFIT SERVICES I	HRA PAYMENTS		17.66

CHECK DATE	CHECK ACCOUNT			VENDOR	INVOICE		AMOUNT
	NUMBER	NUMBER			DESCRIPTION		
12/10/2014	201400769	27 E 700 249 159110		DIVERSIFIED BENEFIT SERVICES I	HRA PAYMENTS		207.86
	201400769	27 E 700 249 213000		DIVERSIFIED BENEFIT SERVICES I	HRA PAYMENTS		6.56
	201400769	27 E 700 249 214400		DIVERSIFIED BENEFIT SERVICES I	HRA PAYMENTS		4.77
	201400769	27 E 700 249 223300		DIVERSIFIED BENEFIT SERVICES I	HRA PAYMENTS		8.33
	201400769	27 E 700 249 223300		DIVERSIFIED BENEFIT SERVICES I	HRA PAYMENTS		12.30
	201400769	10 E 100 249 110300		DIVERSIFIED BENEFIT SERVICES I	HRA PAYMENTS		14.78
	201400769	10 E 150 249 110450		DIVERSIFIED BENEFIT SERVICES I	HRA PAYMENTS		171.09
	201400769	27 E 700 249 158310		DIVERSIFIED BENEFIT SERVICES I	HRA PAYMENTS		17.68
	201400769	10 E 100 249 110000		DIVERSIFIED BENEFIT SERVICES I	HRA PAYMENTS		0.00
	201400769	10 E 200 249 122000		DIVERSIFIED BENEFIT SERVICES I	HRA PAYMENTS		10.84
	201400769	10 E 100 249 122000		DIVERSIFIED BENEFIT SERVICES I	HRA PAYMENTS		10.89
					Totals for 201400769		2,255.90
12/08/2014	201400770	10 E 100 310 254300		WM OF NORTHERN WISCONSIN, INC	Garbage pickup		824.39
	201400770	10 E 200 310 254300		WM OF NORTHERN WISCONSIN, INC	Garbage pickup		824.39
	201400770	10 E 400 310 254300		WM OF NORTHERN WISCONSIN, INC	Garbage pickup		824.40
					Totals for 201400770		2,473.18
12/09/2014	201400771	10 E 800 355 263300		AT&T	DO fax		413.57
					Totals for 201400771		413.57
12/12/2014	201400772	10 E 100 331 253300		XCEL ENERGY	EEC, DO, STORAGE		36.82
	201400772	10 E 100 336 253300		XCEL ENERGY	EEC, DO, STORAGE		177.14
	201400772	10 E 800 331 253300		XCEL ENERGY	EEC, DO, STORAGE		95.00
	201400772	10 E 800 336 253300		XCEL ENERGY	EEC, DO, STORAGE		254.67
					Totals for 201400772		563.63
12/11/2014	201400773	10 E 100 331 253300		XCEL ENERGY	HS, GB FIELD, MS, ELE		1,507.12
	201400773	10 E 100 336 253300		XCEL ENERGY	HS, GB FIELD, MS, ELE		4,026.32
	201400773	10 E 200 331 253300		XCEL ENERGY	HS, GB FIELD, MS, ELE		1,394.81
	201400773	10 E 200 336 253300		XCEL ENERGY	HS, GB FIELD, MS, ELE		4,896.80
	201400773	10 E 400 331 253300		XCEL ENERGY	HS, GB FIELD, MS, ELE		2,268.36
	201400773	10 E 400 336 253300		XCEL ENERGY	HS, GB FIELD, MS, ELE		7,191.71
					Totals for 201400773		21,285.12
12/09/2014	201400774	10 E 100 320 254490		E O JOHNSON COMPANY	Printer/copier lease		2,562.97
	201400774	10 E 200 320 254490		E O JOHNSON COMPANY	Printer/copier lease		1,762.14
	201400774	10 E 400 320 254490		E O JOHNSON COMPANY	Printer/copier lease		2,708.06
	201400774	10 E 800 320 254490		E O JOHNSON COMPANY	Printer/copier lease		227.87
	201400774	50 E 800 320 257220		E O JOHNSON COMPANY	Printer/copier lease		65.94
					Totals for 201400774		7,326.98
12/16/2014	201400775	10 E 800 355 263300		AT&T	Early Childhood		140.62
					Totals for 201400775		140.62
12/17/2014	201400776	10 E 100 249 110000		DIVERSIFIED BENEFIT SERVICES I	HRA PAYMENTS		105.09
	201400776	10 E 100 249 110100		DIVERSIFIED BENEFIT SERVICES I	HRA PAYMENTS		199.68
	201400776	10 E 100 249 110101		DIVERSIFIED BENEFIT SERVICES I	HRA PAYMENTS		288.03
	201400776	10 E 100 249 110200		DIVERSIFIED BENEFIT SERVICES I	HRA PAYMENTS		138.91
	201400776	10 E 100 249 110300		DIVERSIFIED BENEFIT SERVICES I	HRA PAYMENTS		163.66
	201400776	10 E 100 249 143000		DIVERSIFIED BENEFIT SERVICES I	HRA PAYMENTS		35.37
	201400776	10 E 100 249 213000		DIVERSIFIED BENEFIT SERVICES I	HRA PAYMENTS		52.96
	201400776	10 E 100 249 222200		DIVERSIFIED BENEFIT SERVICES I	HRA PAYMENTS		40.44
	201400776	10 E 100 249 241000		DIVERSIFIED BENEFIT SERVICES I	HRA PAYMENTS		192.95
	201400776	10 E 100 249 253300		DIVERSIFIED BENEFIT SERVICES I	HRA PAYMENTS		63.81
	201400776	10 E 100 249 110100		DIVERSIFIED BENEFIT SERVICES I	HRA PAYMENTS		46.38

CHECK DATE	CHECK ACCOUNT			VENDOR	INVOICE		AMOUNT
	NUMBER	NUMBER			DESCRIPTION		
12/17/2014	201400776	10 E 100 249	110101	DIVERSIFIED BENEFIT SERVICES	I HRA PAYMENTS		48.83
	201400776	10 E 100 249	110200	DIVERSIFIED BENEFIT SERVICES	I HRA PAYMENTS		77.99
	201400776	10 E 100 249	110300	DIVERSIFIED BENEFIT SERVICES	I HRA PAYMENTS		39.00
	201400776	10 E 200 249	120000	DIVERSIFIED BENEFIT SERVICES	I HRA PAYMENTS		18.42
	201400776	10 E 200 249	120600	DIVERSIFIED BENEFIT SERVICES	I HRA PAYMENTS		89.08
	201400776	10 E 200 249	121000	DIVERSIFIED BENEFIT SERVICES	I HRA PAYMENTS		5.67
	201400776	10 E 200 249	122000	DIVERSIFIED BENEFIT SERVICES	I HRA PAYMENTS		132.43
	201400776	10 E 200 249	123000	DIVERSIFIED BENEFIT SERVICES	I HRA PAYMENTS		12.11
	201400776	10 E 200 249	124000	DIVERSIFIED BENEFIT SERVICES	I HRA PAYMENTS		52.22
	201400776	10 E 200 249	125400	DIVERSIFIED BENEFIT SERVICES	I HRA PAYMENTS		2.61
	201400776	10 E 200 249	125500	DIVERSIFIED BENEFIT SERVICES	I HRA PAYMENTS		23.25
	201400776	10 E 200 249	125510	DIVERSIFIED BENEFIT SERVICES	I HRA PAYMENTS		46.66
	201400776	10 E 200 249	126000	DIVERSIFIED BENEFIT SERVICES	I HRA PAYMENTS		60.73
	201400776	10 E 200 249	127000	DIVERSIFIED BENEFIT SERVICES	I HRA PAYMENTS		83.82
	201400776	10 E 200 249	132700	DIVERSIFIED BENEFIT SERVICES	I HRA PAYMENTS		26.30
	201400776	10 E 200 249	136320	DIVERSIFIED BENEFIT SERVICES	I HRA PAYMENTS		6.04
	201400776	10 E 200 249	141000	DIVERSIFIED BENEFIT SERVICES	I HRA PAYMENTS		5.80
	201400776	10 E 200 249	143000	DIVERSIFIED BENEFIT SERVICES	I HRA PAYMENTS		48.07
	201400776	10 E 200 249	213000	DIVERSIFIED BENEFIT SERVICES	I HRA PAYMENTS		93.05
	201400776	10 E 200 249	222200	DIVERSIFIED BENEFIT SERVICES	I HRA PAYMENTS		77.65
	201400776	10 E 200 249	241000	DIVERSIFIED BENEFIT SERVICES	I HRA PAYMENTS		121.13
	201400776	10 E 200 249	241100	DIVERSIFIED BENEFIT SERVICES	I HRA PAYMENTS		0.99
	201400776	10 E 200 249	253300	DIVERSIFIED BENEFIT SERVICES	I HRA PAYMENTS		86.26
	201400776	10 E 200 249	254300	DIVERSIFIED BENEFIT SERVICES	I HRA PAYMENTS		42.01
	201400776	10 E 400 249	121000	DIVERSIFIED BENEFIT SERVICES	I HRA PAYMENTS		28.87
	201400776	10 E 400 249	122000	DIVERSIFIED BENEFIT SERVICES	I HRA PAYMENTS		186.11
	201400776	10 E 400 249	123000	DIVERSIFIED BENEFIT SERVICES	I HRA PAYMENTS		81.05
	201400776	10 E 400 249	124000	DIVERSIFIED BENEFIT SERVICES	I HRA PAYMENTS		107.78
	201400776	10 E 400 249	125400	DIVERSIFIED BENEFIT SERVICES	I HRA PAYMENTS		2.61
	201400776	10 E 400 249	125500	DIVERSIFIED BENEFIT SERVICES	I HRA PAYMENTS		23.25
	201400776	10 E 400 249	126000	DIVERSIFIED BENEFIT SERVICES	I HRA PAYMENTS		155.71
	201400776	10 E 400 249	127000	DIVERSIFIED BENEFIT SERVICES	I HRA PAYMENTS		150.94
	201400776	10 E 400 249	141000	DIVERSIFIED BENEFIT SERVICES	I HRA PAYMENTS		8.82
	201400776	10 E 400 249	143000	DIVERSIFIED BENEFIT SERVICES	I HRA PAYMENTS		48.54
	201400776	10 E 400 249	213000	DIVERSIFIED BENEFIT SERVICES	I HRA PAYMENTS		65.45
	201400776	10 E 400 249	222200	DIVERSIFIED BENEFIT SERVICES	I HRA PAYMENTS		77.55
	201400776	10 E 400 249	241000	DIVERSIFIED BENEFIT SERVICES	I HRA PAYMENTS		113.91
	201400776	10 E 400 249	241100	DIVERSIFIED BENEFIT SERVICES	I HRA PAYMENTS		3.12
	201400776	10 E 400 249	253300	DIVERSIFIED BENEFIT SERVICES	I HRA PAYMENTS		79.86
	201400776	10 E 400 249	254300	DIVERSIFIED BENEFIT SERVICES	I HRA PAYMENTS		42.01
	201400776	10 E 400 249	132700	DIVERSIFIED BENEFIT SERVICES	I HRA PAYMENTS		76.00
	201400776	10 E 400 249	136320	DIVERSIFIED BENEFIT SERVICES	I HRA PAYMENTS		40.41
	201400776	10 E 700 249	172000	DIVERSIFIED BENEFIT SERVICES	I HRA PAYMENTS		59.40
	201400776	10 E 800 249	211100	DIVERSIFIED BENEFIT SERVICES	I HRA PAYMENTS		25.82
	201400776	10 E 800 249	214400	DIVERSIFIED BENEFIT SERVICES	I HRA PAYMENTS		30.81
	201400776	10 E 800 249	221910	DIVERSIFIED BENEFIT SERVICES	I HRA PAYMENTS		80.96
	201400776	10 E 800 249	223100	DIVERSIFIED BENEFIT SERVICES	I HRA PAYMENTS		24.76
	201400776	10 E 800 249	232100	DIVERSIFIED BENEFIT SERVICES	I HRA PAYMENTS		88.85
	201400776	10 E 800 249	252000	DIVERSIFIED BENEFIT SERVICES	I HRA PAYMENTS		69.69
	201400776	10 E 800 249	254200	DIVERSIFIED BENEFIT SERVICES	I HRA PAYMENTS		42.00
	201400776	10 E 800 249	254300	DIVERSIFIED BENEFIT SERVICES	I HRA PAYMENTS		43.48
	201400776	10 E 800 249	239000	DIVERSIFIED BENEFIT SERVICES	I HRA PAYMENTS		0.00
	201400776	27 E 700 249	152000	DIVERSIFIED BENEFIT SERVICES	I HRA PAYMENTS		59.40
	201400776	27 E 700 249	158100	DIVERSIFIED BENEFIT SERVICES	I HRA PAYMENTS		13.50
	201400776	27 E 700 249	158320	DIVERSIFIED BENEFIT SERVICES	I HRA PAYMENTS		46.47
	201400776	27 E 700 249	158330	DIVERSIFIED BENEFIT SERVICES	I HRA PAYMENTS		11.81

CHECK DATE	CHECK ACCOUNT			INVOICE			AMOUNT
	NUMBER	NUMBER	VENDOR	DESCRIPTION			
12/17/2014	201400776	27 E 700 249 158340	DIVERSIFIED BENEFIT SERVICES I	HRA PAYMENTS			9.10
	201400776	27 E 700 249 158510	DIVERSIFIED BENEFIT SERVICES I	HRA PAYMENTS			3.71
	201400776	27 E 700 249 158520	DIVERSIFIED BENEFIT SERVICES I	HRA PAYMENTS			46.48
	201400776	27 E 700 249 158530	DIVERSIFIED BENEFIT SERVICES I	HRA PAYMENTS			46.55
	201400776	27 E 700 249 158710	DIVERSIFIED BENEFIT SERVICES I	HRA PAYMENTS			59.65
	201400776	27 E 700 249 158730	DIVERSIFIED BENEFIT SERVICES I	HRA PAYMENTS			46.51
	201400776	27 E 700 249 158750	DIVERSIFIED BENEFIT SERVICES I	HRA PAYMENTS			46.54
	201400776	27 E 700 249 158760	DIVERSIFIED BENEFIT SERVICES I	HRA PAYMENTS			46.56
	201400776	27 E 700 249 159110	DIVERSIFIED BENEFIT SERVICES I	HRA PAYMENTS			548.01
	201400776	27 E 700 249 213000	DIVERSIFIED BENEFIT SERVICES I	HRA PAYMENTS			17.28
	201400776	27 E 700 249 214400	DIVERSIFIED BENEFIT SERVICES I	HRA PAYMENTS			12.59
	201400776	27 E 700 249 223300	DIVERSIFIED BENEFIT SERVICES I	HRA PAYMENTS			21.95
	201400776	27 E 700 249 223300	DIVERSIFIED BENEFIT SERVICES I	HRA PAYMENTS			32.42
	201400776	10 E 100 249 110300	DIVERSIFIED BENEFIT SERVICES I	HRA PAYMENTS			38.97
	201400776	10 E 150 249 110450	DIVERSIFIED BENEFIT SERVICES I	HRA PAYMENTS			451.07
	201400776	27 E 700 249 158310	DIVERSIFIED BENEFIT SERVICES I	HRA PAYMENTS			46.60
	201400776	10 E 100 249 110000	DIVERSIFIED BENEFIT SERVICES I	HRA PAYMENTS			0.00
	201400776	10 E 200 249 122000	DIVERSIFIED BENEFIT SERVICES I	HRA PAYMENTS			28.57
	201400776	10 E 100 249 122000	DIVERSIFIED BENEFIT SERVICES I	HRA PAYMENTS			28.72
			Totals for 201400776				5,947.62
			Totals for checks				890,759.59

FUND SUMMARY

<u>FUND</u>	<u>DESCRIPTION</u>	<u>BALANCE SHEET</u>	<u>REVENUE</u>	<u>EXPENSE</u>	<u>TOTAL</u>
10	GENERAL	570,863.28	0.00	155,704.75	726,568.03
21	SPECIAL REVENUE TRUST FUND	0.00	0.00	53.98	53.98
27	SPECIAL EDUCATION FUND	110,240.07	0.00	22,162.26	132,402.33
50	FOOD SERVICE	7,319.44	0.00	24,124.81	31,444.25
80	COMMUNITY SERVICE	291.00	0.00	0.00	291.00
***	Fund Summary Totals ***	688,713.79	0.00	202,045.80	890,759.59

\*\*\*\*\* End of report \*\*\*\*\*



<u>CHECK</u>	<u>CHECK</u>	<u>ACCOUNT</u>	<u>INVOICE</u>		
<u>DATE</u>	<u>NUMBER</u>	<u>NUMBER</u>	<u>VENDOR</u>	<u>DESCRIPTION</u>	<u>AMOUNT</u>
12/16/2014	8081	61 L 000 000 814000 000	COCA-COLA BOTTLING C	Order for The Red Zone	132.48
				Totals for 8081	132.48
12/19/2014	8082	61 L 000 000 814228 000	DOLEZEL, LAURA	donation to victims of fire	150.00
				Totals for 8082	150.00
12/22/2014	8083	61 L 000 000 814404 000	ROSHELL ELECTRIC, IN	installation of electrical	150.47
				outlets in FB/BB locker room	
				Totals for 8083	150.47
				Totals for checks	432.95

FUND SUMMARY

<u>FUND</u>	<u>DESCRIPTION</u>	<u>BALANCE SHEET</u>	<u>REVENUE</u>	<u>EXPENSE</u>	<u>TOTAL</u>
61	EXTRA CURRICULAR FUND	432.95	0.00	0.00	432.95
***	Fund Summary Totals ***	432.95	0.00	0.00	432.95

\*\*\*\*\* End of report \*\*\*\*\*

# Executive Summary

The School District of Altoona wishes to construct a new Elementary School on the eastern edge of the City of Altoona. The construction is to take place on a 54 acre undeveloped parcel south of Bartlett Avenue (CTH KB). The site currently has no developed roadway access or utility service from municipal water or sanitary sewer.

The proposed school site layout will incorporate the immediate building construction, as well as the roadways, parking lots, athletic fields, and other site features necessary to provide an effective school facility. Considerations should also include accommodations for future expansion within the site. The most feasible location for the access roadway is a connection to Bartlett Avenue which will include turn lanes and geometrics as required by the expected school traffic connecting to County Highway KB.

An important consideration for the site is the potential options for sanitary sewer and water main service. For both water and sewer, there are options to connect to the northwest on Bartlett Avenue, or to the south toward Mayer Road and the area around Curt Manufacturing. To the north, the City is planning a reconstruction of Bartlett Avenue including new street and utilities between 3<sup>rd</sup> Avenue and Sunday Drive.

## Sanitary Sewer

For sanitary sewer, the discharge from the school building would flow in pipes by gravity toward Bartlett Avenue. The topography of the site and elevations of the City's existing sewer will then require a lift station on site to pump the school's sewage through a forcemain pipe to a connection with the City of Altoona's municipal sewer system. Two routing options for sanitary sewer were reviewed as described below.

**Option 1 for sanitary sewer** would include a forcemain pipe along Bartlett Avenue, connecting to the newly installed sanitary sewer near Sunday Drive. This option would most likely be the least expensive of the sanitary sewer options, but would require challenging installation along the north side of Bartlett Avenue near the railroad right-of-way. It also would connect additional sewer flow to the existing lift station at Bartlett Avenue and Walden Court, which is in questionable condition and discharges to existing gravity sewers which are already near their recommended capacity.

**Option 2 for sanitary sewer** would utilize the same onsite gravity pipes and lift station, but would route the forcemain pipe for pumped sewage to the south; up and over the high ridge on the site towards the south. The pumped flow could discharge to gravity sewer mains in the area of Curt Manufacturing which drain down Mayer Road to a larger diameter pipe along US Highway 12. This option is estimated to have a higher cost than the northern option, but would discharge the sewage into a part of the existing sewer system which has more capacity for additional flows.

**Other options for sanitary sewer** are to serve a larger ultimate service area with increased infrastructure. This would include some larger pipes and a deeper lift station to accommodate additional flows from extended areas as future development occurs to the east and north. Increasing this ultimate sewer service to include approximately 70-80 additional acres of unserved land is possible with the expense of a deeper and larger lift station. The ultimate service area is considered using gravity flow, and is limited by the surrounding topography, unless additional pumping stations are installed in future expansion areas.

## Water Mains

The water demands of the new school include service for normal school operations, and also the fire protection requirements regarding minimum flowrates and pressures. Analysis of the City's existing water distribution system was conducted using computerized modeling software, incorporating different scenarios for the water main connection to the new school. Five scenarios were reviewed to investigate the adequacy of water service and fire protection to the school site.

**Scenario 1 for water main** would include a new water main installed northwest along Bartlett Avenue to a connection with the new water piping being installed by the City as part of the reconstruction project.

## Executive Summary (Continued)

This option would serve the bare minimum needs of the school, but may not fulfill the fire flow requirements of the site, and would require additional investigation to verify the expected conditions.

**Scenario 2 for water main** would be to connect toward the south, over the ridge to Mayer Road. This option would provide more potential fire flow than the northerly connection, which would likely be adequate for the school's daily needs and fire sprinkler system. However, the flow for hydrants would be limited, especially when considered with the the high fire flow demand of the Curt Manufacturing facilities.

**Scenario 3 for water main** would be a combination of options 1 and 2, connecting the water main to both the south and the north. This would create a looped system with two feed points, which would significantly increase the available water and fire flow to the site. This loop connection could be created with typical 8-inch diameter water main piping, or potentially with a portion of 12-inch or larger piping in anticipation of a future water tower.

**Scenario 4 for water main** would include the looped connection of option 3, but incorporates a new elevated storage tank. This potential water tower could be located on what is now the high southeast part of the property. A municipal water tower at this location would boost the available water to the school site well above the desired flowrates, and allow for considerable additional new development beyond the current water service area.

**Scenario 5 for water main** is the same loop and water tower as option 4, but considers the further extension of water mains to the south to serve future development areas. The analysis showed that this future scenario would provide adequate water supply to the areas well southward along Mayer Road toward Prill Road (CTH AA).

### Storm Water

Storm water runoff, collection, and storage will also need to be considered for the school site and comply with Wisconsin DNR and City of Altoona requirements. The site will need to incorporate features to convey site runoff, whether by pipes or swales. A storm water basin located in the lowest northwest corner of the site is the most logical location for the device which will provide storm water treatment, storage, and infiltration as will be required by site permitting. The possibility of connecting some of Bartlett Avenue's runoff to this same pond should be investigated further to determine whether this pond could be operated as a joint facility with the City.

### Recommendations

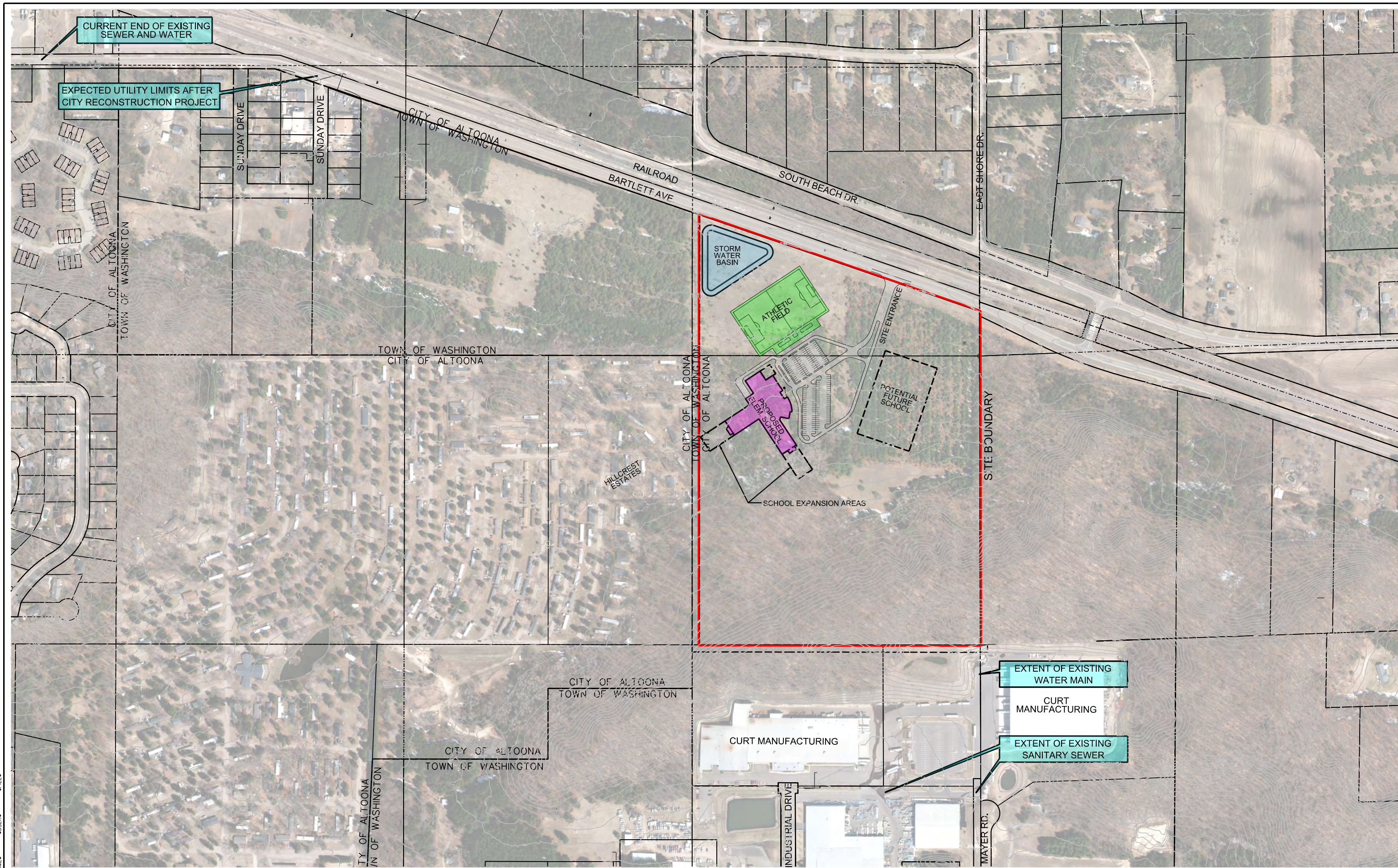
When all the factors are examined for the site needs and future expansion of the municipal utility infrastructure, the following recommendations can be concluded:

The School District and their architect and engineer should work closely with City of Altoona to coordinate the necessary utility connections incorporating the overall benefits to the municipal infrastructure and what cost sharing possibilities may exist.

**Option 1 for sanitary sewer** is the minimum required to independently serve the school property, and minimally impact the City's uncertain available capacity in the Bartlett Avenue sewer infrastructure. Option 2 should also be considered as a viable option to help support surrounding development

**Scenario 3 is recommended for water main** to provide desired flow and pressure at the school site with a looped water main connection.

The site should also be connected **with bicycle and pedestrian trails** to Bartlett Avenue and a portion of the Hillcrest Estates. The route along Bartlett Avenue for a trail is very restricted by existing features and the proximity to the roadway and railway. The addition of a trail may require road modifications in order to construct a safe and desirable bike/pedestrian route.



CURRENT END OF EXISTING SEWER AND WATER

EXPECTED UTILITY LIMITS AFTER CITY RECONSTRUCTION PROJECT

STORM WATER BASIN

ATHLETIC FIELD

PROPOSED ELEM. SCHOOL

POTENTIAL FUTURE SCHOOL

SCHOOL EXPANSION AREAS

EXTENT OF EXISTING WATER MAIN

CURT MANUFACTURING

EXTENT OF EXISTING SANITARY SEWER

CURT MANUFACTURING

DRAWN: JLK  
 DESIGNED: BWC  
 CHECKED: BWC

NO.	BY	DATE	REVISIONS

**SEH**  
 PHONE: 715.720.6200  
 10 NORTH BRIDGE STREET  
 CHIPPEWA FALLS, WI 54729

PROPOSED SCHOOL SITE  
 FEASIBILITY STUDY  
 ALTOONA, WISCONSIN

PROPOSED SCHOOL SITE LAYOUT

FILE NO. ARCDG 130717  
 DATE 12/30/2014  
 FIGURE 1

DATES USERS FILES

December 18, 2014

Connie Biedron, Superintendent  
School District of Altoona  
809 7<sup>th</sup> Street West  
Altoona, WI 54720

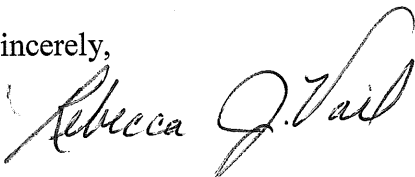
Dear Ms. Biedron:

This is in response to the district's letter of December 17, 2014, requesting a waiver from the Commencement of School Term (Wis. Stat. sec. 118.045) for the School District of Altoona to begin their school term prior to September 1, 2015. A recently approved building referendum necessitates additional time during the summer of 2016 to complete this project. Therefore, the district would like to start school on August 19, 2015.

As you are aware, major construction projects that cause the school term to be altered fall into the extraordinary reasons category for which waivers maybe granted. The request for waiver is granted for the 2015-16 school year. It is our understanding that the starting date will be no earlier than August 19, 2015.

Best wishes as you continue to provide educational opportunities for your students.

Sincerely,



Rebecca J. Vail, Director  
Content and Learning Team

RJV:bjk

c: Helen Drawbert, President, School Board of Altoona  
Michael Thompson, Deputy State Superintendent

**Altoona Library Board Meeting Agenda**  
**Thursday, December 18**  
**8:30 A.M. in the library**

1. Call Meeting to Order
2. Roll call for Library Board
3. Approval of November Minutes
4. Public Comments
5. President's report
6. Approval of November expenses and financials
7. Discussion regarding petty cash
8. Discuss/consider creating a building committee in response to the library space needs report
9. Discuss/consider update to the Internet and Computer Use Policy
10. Librarian's report
  - a. Circulation October
  - b. Programming October & upcoming
11. Closed session: discuss and consider convening into closed session pursuant of WIS Stat. 19.85 (1) (c) consider employment, promotion, compensation, or performance evaluation data of any public employee over which the governmental body has jurisdiction or exercise responsibility.
  - a. Library director contract
12. Motion to reconvene to Open Session for the purpose of discussion and possible consideration on the matter entertained in Closed Session.
  - a. Library director contract
13. Schedule next meeting & items for the agenda
14. Adjourn

Future Reference:

May: Election of Officers

Sept: Library Director evaluation

November: Long range goal review

Requests from persons with disabilities who need assistance to participate in this meeting or hearing should be made to the Library Director at 839-5029 with as much advance notice as possible.

Students in the District shall be informed annually of available scholarships and awards. Literature concerning available scholarships and awards shall be available through the guidance office and/or posted in the appropriate school building.

The District will select nominees and alternates for the Wisconsin Academic Excellence Higher Education Scholarship and the Wisconsin Technical Excellence Higher Education Scholarship in accordance with established procedures for those awards.

The District shall not unlawfully discriminate in the acceptance or administration of awards, scholarships, or other aids, benefits, or services to students from private agencies, organizations, or persons on the basis of sex, race, national origin, ancestry, creed, color, pregnancy, marital or parental status, sexual orientation or physical, mental, emotional or learning disability. Discrimination complaints shall be processed in accordance with established procedures. Accordingly, any scholarship or award granted by, administered by, or advertised/promoted by the District shall be in compliance with the above-stated policy of nondiscrimination.

Notice of this policy and its accompanying complaint procedures shall be published at the beginning of each school year in the District's back to school newsletter, posted in each school building in the District, and posted on the District's website. In addition, a student nondiscrimination statement shall be included in student and staff handbooks, course selection handbooks and other published material distributed to the public describing school activities and opportunities.

Legal References: 118.13, 39.415, 39.41 Wisc. Statutes; PI 9.03(1)(d), HEA 9 Wisc. Admin. Code

Federal Laws: Title IX, Education Amendments of 1972, Section 504 of the Rehabilitation Act of 1973, related civil rights laws Federal Laws

**Cross References:**

411 – Student Nondiscrimination/Equal Education Opportunities

Adopted: 03/15/93

Amended:



The number of seniors permitted by state law with a demonstrated exemplary level of proficiency in technical education subjects, as determined under these procedures, will be selected as the high school's designee(s) to receive the Wisconsin Technical Excellence Scholarship. Any ties will be broken and alternates will be designated as further provided by law and in these procedures. A student who receives a Technical Excellence Scholarship is not eligible to receive a Wisconsin Academic Excellence Higher Education Scholarship, and vice versa.

The District's designation of its scholar(s) and alternate(s) is not a final determination that the student has met, or will meet, all applicable requirements for receipt of the scholarship funds. If a senior selected for the scholarship declines the scholarship or is determined to be ineligible for the scholarship for any lawful reason, the Wisconsin Higher Educational Aids Board (HEAB) may award the District's scholarship to a designated alternate recipient.

### **DESIGNATING SCHOLARS AND ALTERNATES**

The District shall identify its Technical Excellence Scholarship designee(s) and alternate(s) using the following procedures:

1. Any high school senior who is eligible to compete for the scholarship shall declare his/her interest in being considered as a candidate by submitting, on a timely basis, a form or other means of notice as directed by the administration.
2. Members of the District's high school staff shall verify that each student who has submitted a timely declaration of interest meets the mandatory scholarship eligibility requirements that are to be verified at the school level. In addition to any such requirements established by the scholarship program's authorizing statute, the following requirements also apply:
  - a. The minimum scholarship eligibility requirements established by the HEAB related to (1) a student's demonstration of his/her academic and career interest/ planning connected to one or more areas of technical education; and (2) a student's documented fulfillment of one or more of the specific qualifying activities related to technical education (as identified by the HEAB).
  - b. The following are additional mandatory scholarship eligibility criteria that are established by the District:
    - High School Transcript
3. Upon identifying the group of qualified scholarship candidates from the list of students who declared an interest in being considered for the scholarship, the

District will apply a point system reflective of course work and technical education experience to rank and designate scholars and alternates in relation to their proficiency in technical education subjects:

- One (1) point is given to a student for each credit earned in high school CTE (Career and Technical Education) courses as defined on the Student Declaration of Interest for Being Considered for Technical Excellence Scholarship form (462-Exhibit).
  - One (1) point is given to a student for each year of activity in a Career and Technical Student Organization (CTSO) in Wisconsin ([http://cte.dpi.wi.gov/cte\\_ctso](http://cte.dpi.wi.gov/cte_ctso)).
  - For purpose of assigning a ranking among eligible candidates, credit hours in process at the time of nomination should be counted toward the number of credits the student has earned.
  - When students emerge from the point system with tied scores, CTE grades become the tie-breaker.
4. All relevant ties following the previous step shall be resolved through tie-breaking procedures developed and adopted by representatives of the high school faculty.
  5. The high school will designate and rank alternate(s) (the remaining qualified students that completed the Student Declaration of Interest for Being Considered for Technical Excellence Scholarship form) for each designated scholar.

A work team comprised of at least one high school administrator and at least one high school counselor and a CTE teacher shall be responsible for reviewing the relevant records and ranking and ordering the designated scholars and alternates, including applying tie-breaking procedures to the extent necessary.

The High School Principal shall be responsible for ensuring that the District timely designates and notifies the HEAB of the District's scholars and alternates.

#### **DISTRICT REQUIREMENTS DETERMINING WHEN A STUDENT MAY COMPETE FOR THE SCHOLARSHIP**

As far as (1) determining when a student acquires senior status and the year in which he/she may otherwise compete for the Technical Excellence Scholarship; and (2) defining the length of time the student must have attended high school in the District in order to compete for the Technical Excellence Scholarship, the District will use the same standards that apply to the process for designating scholars and alternates for the Academic Excellence Scholarship.

## **HIGH SCHOOL GRADING POLICY**

The District has a written high school grading system that shall be applied to the process of designating scholars and alternates for a Technical Excellence Scholarship. To the extent it is necessary to calculate a student's overall grade point average, or grade point average in a subset of courses especially relevant to the Technical Excellence Scholarship, the high school grading system shall be applied, so far as practical, in the same manner as it is applied to calculate the student's cumulative grade-point average as reported on the student's high school transcript (including to the same number of decimal places).

## **TIE-BREAKING PROCEDURES**

If, following the application of the District's system for ranking and designate scholars and alternates, as described above, the work team assigned to make such designations determines that two or more relevant students remain tied, the work team shall apply the following tie-breaking procedures (in the order listed and to the extent necessary to resolve the tie), which were developed and approved by representatives of the high school faculty on December 8, 2014:

- First tie-breaker: The students' high school grade point average in only those courses designated by the District as Career and Technical Education courses.
- Second tie-breaker: The total number of (1) technical college credits earned while the student has been in high school; and (2) technical college credits that are in progress during the current semester.
- Third tie-breaker: The students' cumulative high school grade point average.
- Fourth tie-breaker: Each student's highest American College Test (ACT test) score, if an ACT score is available for all of the students who remain tied.
- Fifth tie-breaker: The student with the most high school credits earned by the end of the semester prior to the semester in which the scholarship is awarded.

APPROVED:

---

**STUDENT APPLICATION TO BE A CANDIDATE FOR THE WISCONSIN TECHNICAL EXCELLENCE  
SCHOLARSHIP**

DIRECTIONS FOR THE SCHOLARSHIP SELECTION PROCESS STARTING IN THE 2014/15  
SCHOOL YEAR:

1. **Complete this application form as accurately as possible.**
2. **Attach the following additional materials:**
  - High School Transcript
3. **Return the completed form and any attachments to *the Altoona High School, School Counseling Office* by no later than \_\_\_\_\_ (date).**

STUDENT'S NAME (PRINT): \_\_\_\_\_

**A. STUDENT'S STATEMENT OF INTEREST IN A TECHNICAL FIELD, OCCUPATION, OR INDUSTRY**

Describe your interest in a potential future career in any technical field, occupation, or industry that would be advanced by your participation in a post-high school education program at a Wisconsin Technical College. Be sure to identify what you have done through school, employment, or other learning or career-planning activities to demonstrate your interest. (You may attach additional sheets if needed.)

---

---

---

---

---

**B. STATE-MANDATED MINIMUM PARTICIPATION CRITERIA FOR THE SCHOLARSHIP**

Place a check in the box next to each item in the list in this section that applies to you (i.e., check all that apply). If you are unsure whether you meet one or more of the items, contact your guidance counselor. The state agency that administers these scholarships requires each potential scholarship recipient to meet, at a minimum, at least one of the items in this list.

During high school, I have pursued structured learning in one or more [Career Pathways](#), as defined by the Wisconsin Department of Public Instruction, by doing either of the following:

- Taking courses that qualify me as a “**Career and Technical Education (CTE) Concentrator**” (A minimum of 3 qualifying CTE courses within an identified Career Pathway are required; either all 3 courses must already be complete or the student must have completed 2 of the courses and currently be enrolled in a 3<sup>rd</sup> course.); or

If you have checked a box for this item, which Cluster and Career Pathway(s) have you pursued? List three (3) or more of the CTE courses you have taken at Altoona High School:

- |          |          |
|----------|----------|
| 1. _____ | 3. _____ |
| 2. _____ | 4. _____ |

I have participated in Wisconsin’s Youth Apprenticeship Program.

I have participated in, and have completed or am on track to complete, a technical education program leading to a Technical Education High School Diploma that is offered through my high school.

I have participated in a Career and Technical Training pathway as defined by the Wisconsin Department of Public Instruction (DPI) ([http://cte.dpi.wi.gov/cte\\_clustersandpaths](http://cte.dpi.wi.gov/cte_clustersandpaths))

(If you have taken a Youth Options course or are currently enrolled, you are probably participating in a Career and Technical Training pathway. Attach a list.)

I have received (or am on track to receive) a certificate for my participation in a state-certified Skills Standards Program.

I have completed (or I am on track to complete prior to my graduation from high school) an industry-recognized certification program (for example: Certified Nursing Assistant CNA) approved by the State Superintendent in connection with CTE incentive grants.

If you have checked the box for this item, identify the certification program:

\_\_\_\_\_

During high school, I have participated in one or more of the career and technical student organizations (CTSOs) recognized by the Wisconsin Department of Public Instruction (e.g., DECA, FBLA, FCCLA, FFA, HOSA, or SkillsUSA).

I have completed a technical training program for high school students that was provided by a UW-System school, a Wisconsin Technical College, a tribal college in Wisconsin, or a private non-profit college/university located in Wisconsin. (These programs are subject to review, verification, and approval by the High School Principal or his/her designee. Programs held at a Wisconsin college or university campus, but offered by a person, school, or organization other than a qualifying Wisconsin educational institution are not eligible.)

*(Examples include but are not limited to: Medical College of Wisconsin Summer Enrichment Program, UW-Madison's Summer Science Institute at WIScience, Marquette University's K-12 Engineering Academies, MSOE summer programs for K-12 students)*

**If you have checked the box for this item, identify the program, the educational institution that provided the program, and the dates of your participation. Additional information:**

\_\_\_\_\_

**C. PARTICIPATION IN CAREER AND TECHNICAL STUDENT ORGANIZATIONS (CTSOs)**

In the chart below, place a checkmark in the box (es) for each high school grade in which you actively participated in any of the CTSOs. (Active participation means being an active member for "substantially the entire school year"):

Career and Technical Student Organization	Grades			
	9	10	11	12
DECA				
Future Business Leaders of America (FBLA)				
Family, Career and Community Leaders of America (FCCLA)				
Future Farmers of America (FFA)				
Future Health Professionals (HOSA)				
SkillsUSA				

**D. STUDENT'S DECLARATION AND SIGNATURE:**

By signing this scholarship application, I am asking to be evaluated as a candidate for the Wisconsin Technical Excellence Scholarship. The information I have provided in connection with this application is true and complete to the best of my knowledge.

I understand that (1) the information I have provided about my candidacy remains subject to the school's review and approval; (2) a student who receives a Technical Excellence Scholarship is not eligible to receive a Wisconsin Academic Excellence Scholarship, and vice versa; and (3) the high school's designation of a student as a scholar or alternate is not a final determination that the student has met, or will meet, all applicable requirements for the receipt of the scholarship funds.

STUDENT'S SIGNATURE: \_\_\_\_\_ DATE: \_\_\_\_\_

APPROVED:

## **2015 WASB DELEGATE ASSEMBLY**

### **AGENDA**

**TUESDAY, JANUARY 20, 2015, 7:00 P.M.**

#### **RESOLUTION DISCUSSION SESSION**

(Crystal Ballroom – Hilton Milwaukee City Center Hotel, Milwaukee)

**WEDNESDAY, JANUARY 21, 2015, 8:00 A.M. – 9:00 A.M.**

#### **CONVENTION/DELEGATE ASSEMBLY ORIENTATION (intended for first time attendees)**

(Ballroom AB, First Level – Wisconsin Center)

**WEDNESDAY, JANUARY 21, 2015, 1:30 P.M.**

#### **DELEGATE ASSEMBLY CONVENES**

(Ballroom AB, First Level – Wisconsin Center)

- I. Call to Order by President Blecha at 1:30 p.m.**
- II. Introductions**

Introduction of members of the 2014 WASB Board of Directors, 2014 WASB Policy & Resolutions Committee, Secretary, Legal Counsel and Parliamentarian, Timer, Credentials Committee and Tellers.

#### **2014 WASB Board of Directors**

Mike Blecha, President, Green Bay, Region 3  
Wanda Owens, 1<sup>st</sup> Vice President, Barneveld, Region 9  
Stu Olson, 2<sup>nd</sup> Vice President, Shell Lake, Region 1  
Nancy Thompson, Immediate Past President, Waterloo, Region 12  
Terry McCloskey, Three Lakes, Region 2  
Bill Yingst, Sr., Durand, Region 4  
Rick Eloranta, Owen-Withee, Region 5  
Mary Jo Rozmenoski, Black River Falls, Region 6  
Elizabeth Hayes, Fond du Lac, Region 7  
Steve Klessig, Brillion, Region 8  
Alice Marquardt, Rio, Region 10  
Colin Butler, Kettle-Moraine, Region 11  
Patrick Sherman, Genoa City J2, Region 13  
Terry Falk, Milwaukee, Region 14  
Ron Frea, Pewaukee, Region 15



### 2014 WASB Policy & Resolutions Committee:

Wanda Owens, Barneveld, Chair	Gary Schumacher, Freedom
Linda Flottum, Turtle Lake	Jennifer Berge, Valders
Christina Kintop, Superior	Mike Humke, Dodgeville
Rob Morehouse, Superior	Christine Panka, Prairie du Chien
Stu Olson, Shell Lake	Andy Zellmer, Montello
Deanna Pierpont, Mercer	Deb Nelson, River Valley
David Schmidt, Chequamegon	Gary Vose, Kettle Moraine
Martha Luber Pelrine, Gibraltar	Linda Witkowski, Franklin
Mike Blecha, Green Bay	Nancy Thompson, Waterloo
Bec Kurzynske, Oconto Falls	Donna Tarpinian, Stoughton
Julie Gilles, Plum City	Scott Johnson, Fort Atkinson
Robin Elvig, Altoona	Carl Bryan, Kenosha
Diana Bohman, Tomorrow River	Karl Dommershausen
Josh Dickerson, DC Everest	Larry Miller, Milwaukee
Kate Mayer, Holmen	Mark Sain, Milwaukee
Amy Hoffman, Black River Falls	Al Zietlow, Arrowhead UHS
Jim Lautenschlaeger, Cedar Grove-Belgium	Albert Klumpp, Rubicon J6

### **III. Credentials Committee Report**

### **IV. Adopt Procedural Rules**

### **V. WASB Policy & Resolutions Committee Recommended Resolutions (Enclosed)**

**VI.** The following resolutions brought up under Article IX of the Bylaws may be considered with a two-thirds favorable vote of those present and voting. Adoption of the resolution then requires a majority vote.

- Emergency resolutions presented by the Policy & Resolutions Committee;

- Resolutions that had been submitted to the Policy & Resolutions Committee on or before September 15, but were turned down by the committee and brought up for action by their sponsors; or

- Resolutions by member boards after September 15 brought up for action by their sponsors as long as the member boards provided each member a copy of their proposed resolution with rationale three weeks before the Delegate Assembly.

### **VII. Other Business from the Delegates**

### **VIII. Adjournment**

**Note:** The Delegate Assembly is scheduled to be held from approximately 1:30 p.m. to 5:00 pm, or until completion of the Assembly's business.

**More:**

[http://www.wasb.org/websites/advoc\\_gov\\_relations/index.php?p=391](http://www.wasb.org/websites/advoc_gov_relations/index.php?p=391)



1 ***Resolution 15-03: School Start Date Waivers & Pupil Transportation—Alignment of Public &***  
2 ***Private School Calendars***

3 Create: The WASB encourages the DPI to grant a start date waiver to every school district that has  
4 been unable to reach agreements to align the school year start date with private and parochial  
5 schools for which the district provides pupil transportation.

6  
7 Rationale: Some private and parochial high schools advertise that they start school prior to  
8 September 1 and assert that students who attend their schools will, for example, have more time to  
9 prepare for Advanced Placement (AP) exams. The Policy & Resolutions Committee advanced this  
10 resolution to allow WASB members to decide whether to express their support for encouraging the  
11 DPI to recognize the competitive disadvantage and costs to public school districts when schedules  
12 are not aligned when it considers granting waivers to the September 1 start date mandate.

13  
14  
15 ***Resolution 15-04: Technical Education Teacher Shortage***

16 Create: The WASB supports reasonable efforts to address the shortage of licensed technical  
17 education teachers, including efforts to increase the number of licensed teachers qualified to be in a  
18 classroom in technical education content areas where shortages are most acute.

19  
20 Rationale: The Policy & Resolutions Committee advanced this resolution to allow WASB members  
21 to decide whether to express support for addressing the shortage of licensed technical education  
22 teachers in the state and the problems this shortage is creating for districts, including the  
23 phenomenon of districts “poaching” technical education teachers from neighboring districts and the  
24 increased costs to districts that result from the bidding up of salaries, including starting salaries.

25  
26 Efforts to address this problem could, for example, include attempts: to update the trade specialist  
27 permit pathway (§ 118.19, Wis. Stats.), including to reflect that certain apprenticeship programs  
28 (e.g., in auto mechanics) no longer exist; to broaden the alternative teacher training program (§  
29 118.192, Wis. Stats.) to include career and technical education content areas; to harmonize  
30 requirements for those with a bachelor’s degree who are licensed as a technical education  
31 instructor in a technical college with the requirements needed for DPI licensure as a technical  
32 education teacher; to create a general technical education licensure, with the ability to get additional  
33 specific certifications; to rely more on industry standards and certifications plus appropriate  
34 pedagogical training for those who already have a DPI teacher license in a non-technical education  
35 area but are willing to add technical expertise to obtain a technical education license; and to  
36 maximize the use of technical college system resources to prepare candidates for licensure in  
37 automotive-related and other appropriate areas.

38  
39  
40 ***Resolution 15-05: State Funding and Flexibility for Course Options Program***

41 Create: The WASB supports additional, adequate state funding to reimburse the cost to school  
42 districts of students taking courses through the Course Options Program. The WASB further  
43 supports legislation to amend the Course Options Program to provide school districts with an  
44 adequate amount of time to make appropriate adjustments to course offerings, class schedules,  
45 and staffing assignments and to allow districts to give due consideration to their resident students in  
46 allocating spaces in Course Options Program classes conducted as concurrent enrollment classes in  
47 the district’s own facilities and taught by a district teacher.

1 Rationale: The Policy & Resolutions Committee advanced this resolution to allow the members to  
2 decide whether to express support for making revisions to statutory changes that replaced the Part-  
3 time Open Enrollment Program with the Course Options Program, including providing adequate  
4 state funding to ensure the Course Options Program does not operate as an unfunded mandate on  
5 local districts. Among the changes that resulted from the transformation of the Part-Time Open  
6 Enrollment Program to a Course Options Program is that the responsibility for the payment of  
7 tuition to a college or university for a concurrent enrollment course (in which a student receives  
8 both high school and college credit) now falls on the student’s resident school board rather than on  
9 the student. A formal Attorney General opinion affirms that the Course Options Program statute (§  
10 118.52, Wis. Stats.) applies to a concurrent enrollment class taught by a high school teacher who is  
11 classified as an adjunct instructor of the college or university.  
12  
13

14 ***Resolution 15-06: Increase Coordination between Youth Options and Course Options Programs***  
15 Create: The WASB supports statutory changes to improve coordination between the Youth Options  
16 and Course Options programs that provide opportunities for students to complete coursework at  
17 educational institutions other than the student’s resident district. The WASB further supports  
18 reasonable limitations on opportunities for students to initiate postsecondary coursework at other  
19 educational institutions at the expense of the student’s resident school district.  
20

21 Rationale: The Policy & Resolutions Committee advanced this resolution to allow the members to  
22 decide whether to express support for revising the Youth Options and Course Options programs so  
23 they are better coordinated and operate in greater harmony with each other and support for  
24 providing for reasonable limitations on the extent to which public school districts are responsible  
25 for subsidizing the earning of post-secondary credits by students while still enrolled in K-12  
26 schools.  
27  
28

29 ***Resolution 15-07: Open Enrollment–Revise Open Enrollment Application Window Period***  
30 Amend existing resolution 3.77 (j) to add the following underlined language:  
31

32 The WASB supports requiring that all open enrollment applications be submitted within the  
33 statutory window period. Further, the WASB supports legislation shortening the statutory  
34 open enrollment window period so it begins on the first Monday in February and ends on  
35 the second Friday in March.  
36  
37

38 Rationale: The Policy & Resolutions Committee advanced this resolution to allow members to  
39 decide whether to express support for a proposed change the Committee determined could make  
40 open enrollment more manageable for school districts. A shorter application window would give  
41 parents whose open enrollment applications submitted during the window period have been  
42 approved more time to make decisions and would give districts more time to make staffing  
43 decisions.  
44  
45  
46  
47  
48  
49

1 **Resolution 15-08: Open Enrollment –Decision-Making under the Alternative Application Process**

2 Repeal and recreate existing resolution 3.77(k) so it reads as follows:

3  
4 The WASB supports requiring open enrollment applications submitted outside the statutory  
5 window period be subject to the sole approval by the school board of the resident district.  
6

7 **Rationale:** At the time existing resolution 3.77(k) was adopted, creation of an alternative  
8 application process for open enrollment had been proposed but had not yet been enacted into law.  
9 The Policy & Resolutions Committee advanced this resolution to allow WASB members to decide  
10 whether to update existing resolution 3.77(k) to reflect that an exception to the open enrollment  
11 statutory window has indeed been created and to express support for allowing the student’s resident  
12 district to control the approval of open enrollment applications submitted for any reason allowable  
13 under the law outside the statutory application window period.  
14  
15

16 **Resolution 15-09: Modify Out-of-State Tuition Payment Statute**

17 Create: The WASB supports modifications to the tuition payment statute that currently allows  
18 some Wisconsin pupils to attend an out-of-state public school with the pupil’s resident district  
19 making tuition payments to the out-of-state school district.  
20

21 **Rationale:** The Policy & Resolutions Committee advanced this resolution to allow WASB members  
22 to decide whether to express support for modifying a Wisconsin statute (§ 121.78, Wis. Stats.) that  
23 places in-state school districts in border areas in a position where an out-of-state-school can recruit  
24 Wisconsin pupils and have the pupil’s tuition paid by a Wisconsin school district without any  
25 similar mutual obligation on the part of the out-of-state school.  
26

27 Potential changes to this statute include changes that might create a mutuality of obligation (or level  
28 the playing field) between in-state and out-of-state school districts, including: (1) permitting a  
29 Wisconsin school district to deny such requests when the state in which the out-of-state school is  
30 located does not have a reciprocity agreement that similarly permits an out-of-state pupil to attend  
31 school in a Wisconsin school district; (2) better ensuring that Wisconsin school districts and  
32 taxpayers are not financially disadvantaged by such arrangements, including through the provision  
33 of maximum payment amounts; (3) providing that the appeal of a denial by a resident school district  
34 is to the appropriate Wisconsin circuit court rather than to the school district boundary appeal  
35 board; and (4) clarifying that a Wisconsin pupil who enrolls at a public school located outside this  
36 state pursuant to the tuition payment statute is fully counted in membership of his or her resident  
37 district for revenue limit purposes as the pupil would be counted if he or she were attending a public  
38 school in a nonresident Wisconsin public school district under Wisconsin’s Full-Time Open  
39 Enrollment Program.  
40  
41

42 **Resolution 15-10: Boundary Appeal Board Decisions**

43 Create resolution 5.24 c) as follows:

44 c) Considering appeals arising from the tuition payment statute.  
45  
46

47 **Rationale:** The Policy & Resolutions Committee advanced this resolution to allow WASB members to  
48 decide whether to express support for prohibiting the boundary appeal board from considering appeals  
49 arising from the tuition payment statute (§ 121.78, Wis. Stats.).

1 **Resolution 15-11: Rehiring Wisconsin Retirement System (WRS) Retirees**

2 Repeal and recreate existing resolution 4.37 to read as follows:

3  
4 The WASB supports legislation that would: a) allow a person who is receiving a Wisconsin  
5 Retirement System (WRS) retirement annuity to be rehired in WRS participating employment  
6 after at least a 60-day break period between terminating WRS participating employment and  
7 returning to WRS participating employment; and b) restore to such rehired employees the  
8 option to continue to receive their WRS annuity (but not accrue any additional WRS  
9 contributions or service credit), regardless of the number of hours worked.

10  
11 Rationale: The Policy & Resolutions Committee advanced this resolution to allow members to  
12 decide whether to express support for revising and updating resolution 4.37, which was adopted  
13 before legislation regarding rehiring retired WRS participants (e.g., teachers and administrators)  
14 was enacted and whether to express support for a 60-day break-in-service requirement rather than  
15 75 days as required under current law.

16  
17 2013 Wisconsin Act 20, the biennial budget act, changed, from 30 days to 75 days, the length of  
18 time that a WRS participant who has applied for a retirement annuity or payment must wait  
19 between terminating WRS covered employment and returning to WRS participating employment.  
20 Returning to WRS eligible employment within the 75-day minimum break period makes the  
21 participant ineligible for a retirement annuity or lump sum payment. This change first applied to  
22 participating employees under the WRS who terminate covered employment under the WRS on  
23 July 2, 2013. The proposed resolution would decrease the required break-in-service period before a  
24 retired employee may be rehired from 75 days to 60 days.

25  
26 Act 20 further provides that if a WRS participant receiving a retirement annuity obtains subsequent  
27 covered employment in which he or she is expected to work at least two-thirds of what is  
28 considered full-time employment (defined as 880 hours for teachers and educational support staff  
29 and 1,200 hours for all others), the participant's annuity shall be suspended and no annuity payment  
30 shall be payable until after the participant terminates this subsequent covered employment. This  
31 change applies to participating employees under the WRS who terminated covered employment  
32 under the WRS on or after July 2, 2013. The proposed resolution would support restoring to a  
33 rehired employee who is currently receiving a WRS annuity the option to continue to receive his or  
34 her WRS annuity (but not accrue any additional WRS contributions or service credit), regardless of  
35 the number of hours he or she works, rather than being required to suspend the WRS annuity during  
36 the period or reemployment as is the case under current law.

37  
38  
39 **Resolution 15-12: Repeal of "Populous Counties Teacher Tenure" Statute**

40 Create: The WASB supports the repeal of the "teacher tenure" statute.

41  
42 Rationale: The Policy & Resolutions Committee advanced this resolution to allow WASB members  
43 to decide whether to express support for the repeal of the "teacher tenure" law (§ 118.23, Wis.  
44 Stats.), which granted to certain Milwaukee County teachers who achieved tenure status before  
45 December 21, 1995, a form of permanent employment rights known as tenure when they received  
46 their fourth contract in the same school system.

47  
48 Although tenure is no longer being granted, those teachers who received tenure on or before Dec.  
49 21, 1995 are "grandfathered" under the statute and continue to have tenure. A teacher who has

1 attained tenure status may be dismissed or discharged only for the reasons specified in the statute  
2 and upon written charges. The “teacher tenure” statute creates a higher burden on districts seeking  
3 to dismiss or discharge a teacher than even the “just cause” standard that was common in collective  
4 bargaining agreements. Further, a public hearing on the charges before the school board must be  
5 granted if the teacher submits a written request for a hearing.  
6  
7

8 ***Resolution 15-13: Rural School Staff Recruitment and Retention***

9 Create: The WASB supports state and federal initiatives to assist rural school districts in their  
10 efforts to attract and retain high quality staff, including student loan forgiveness programs and  
11 grants for teachers who commit to work in rural school districts for at least a minimum number of  
12 years as determined by the legislature.  
13

14 Rationale: The Policy & Resolutions Committee advanced this resolution in recognition that rural  
15 school districts often have trouble attracting and retaining high quality staff to give WASB  
16 members an opportunity to decide whether to express support for proposals that address this issue.  
17 Often rural school districts complain that they hire new teachers and provide training and  
18 experience only to see them leave for bigger districts that offer higher salaries. Offering incentives  
19 could help attract teachers to underserved, high-needs areas of the state and keep them in those  
20 areas. (A proposal to create a state initiative of this type was endorsed by the Assembly Speaker’s  
21 Task Force on Rural Schools.)  
22  
23

24 ***Resolution 15-14: Rehiring Retired Teachers - Affordable Care Act Issues***

25 Create: The WASB supports legislation to clarify that under the federal Affordable Care Act a  
26 retiree who participates in a school district’s retiree-only Health Reimbursement Arrangement  
27 (HRA) may return to employment in that school district for less than 30 hours per week without  
28 jeopardizing his or her eligibility to continue to receive retiree health benefits through an HRA and  
29 without jeopardizing the school district’s compliance with the Affordable Care Act.  
30

31 Rationale: The Policy & Resolutions Committee advanced this resolution to allow WASB members  
32 to decide whether to express support for addressing a concern that the Affordable Care Act  
33 interferes with some school districts’ abilities to hire retirees, including retired teachers and  
34 administrators as substitute teachers or interim administrators, without impacting the retiree health  
35 benefits of such rehired retirees. The solution suggested by the resolution seeks to provide some  
36 clarity for rehired retirees and for districts alike.  
37  
38

39 ***Resolution 15-15: Student Achievement Guarantee in Education Program (SAGE)***

40 Create: The WASB supports legislation to shift the emphasis of the Student Achievement  
41 Guarantee in Education (SAGE) Program from class-size reduction to achievement-gap reduction.  
42

43 Rationale: The Policy & Resolutions Committee advanced this resolution to allow WASB members  
44 to express their support for a change likely to be recommended by a Legislative Council Special  
45 Study Committee that has been examining alternatives to the current SAGE program.  
46  
47  
48  
49

1 ***Resolution 15-16: Allow School Board Members to Serve as Volunteer Coaches or Student Advisors***

2 Create: The WASB supports legislation to allow a school board member to serve as a volunteer  
3 coach or advisor of student extracurricular activities provided all of the following conditions are  
4 met:

5  
6 (a) The school board member receives no compensation for service as a volunteer coach or  
7 advisor.

8 (b) During the period he or she serves as a volunteer in a particular program, the school  
9 board member abstains from voting on issues before the school board concerning that  
10 program.

11 (c) The appointing authority has received the results of a criminal history background check  
12 from the Wisconsin Department of Justice or the Federal Bureau of Investigation for the  
13 school board member.

14  
15 Rationale: The common law doctrine of incompatibility generally provides that a public officer may  
16 not be a public employee if the office and employment are incompatible. The Policy & Resolutions  
17 Committee advanced this resolution to allow the WASB membership to decide whether to express  
18 support for the adoption in Wisconsin of a law, similar to one enacted in Michigan, which, in effect,  
19 codifies the common law doctrine of incompatibility, but provides an exception to allow a member  
20 of a school board to be appointed to or serve as a volunteer coach or supervisor of a student  
21 extracurricular activity provided certain specific conditions are met.

22  
23  
24 ***Resolution 15-17: Teacher Shortages & Alternative Licensure Pathways***

25 Create: The WASB supports reasonable efforts to provide pathways to licensure for teaching  
26 candidates in subject or content areas where there is a shortage of licensed teachers, provided that  
27 candidates have bachelor's degrees and are qualified to be in a classroom as demonstrated by  
28 appropriate experience, knowledge and skills in the subject or content area, and rigorous training in  
29 pedagogy, assessment, and classroom management.

30  
31 Rationale: The Policy & Resolutions Committee advanced this resolution to allow WASB members  
32 to decide whether to express support for reasonable efforts to provide alternative pathways to  
33 licensure in subject or content areas where there is a shortage of licensed teachers.